

For Research Use Only

ILK Polyclonal antibody

Catalog Number: 12955-1-AP **3 Publications**



Basic Information

Catalog Number:

12955-1-AP

Size:

150ul , Concentration: 450 µg/ml by Nanodrop and 280 µg/ml by Bradford method using BSA as the standard;

Source:

Rabbit

Isotype:

IgG

Immunogen Catalog Number:

AG3570

GenBank Accession Number:

BC001554

GeneID (NCBI):

3611

Full Name:

integrin-linked kinase

Calculated MW:

451 aa, 59 kDa

Observed MW:

51-59 kDa

Purification Method:

Antigen affinity purification

Recommended Dilutions:

WB 1:500-1:2000

IP 0.5-4.0 ug for IP and 1:500-1:1000 for WB

IHC 1:50-1:500

Applications

Tested Applications:

IHC, IP, WB, ELISA

Cited Applications:

WB

Species Specificity:

human, mouse, rat

Cited Species:

human

Note-IHC: suggested antigen retrieval with TE buffer pH 9.0; (*) Alternatively, antigen retrieval may be performed with citrate buffer pH 6.0

Positive Controls:

WB : mouse brain tissue, mouse kidney tissue

IP : mouse kidney tissue,

IHC : human prostate cancer tissue,

Background Information

Integrin-linked kinase (ILK) is an ankyrin-repeat containing serine-threonine protein kinase capable of interacting with the cytoplasmic domains of integrin $\beta 1$, $\beta 2$, and $\beta 3$ subunits and whose kinase activity is modulated by cell-extracellular matrix interactions (PMID: 9539744). This protein belongs to the protein kinase superfamily. It can be autophosphorylated on serine residues.

Notable Publications

Author	Pubmed ID	Journal	Application
Lan Lin	32485356	Int Immunopharmacol	WB
Ying Feng	33531984	J Cancer	WB
Q Zhou	30739146	Osteoporos Int	WB

Storage

Storage:

Store at -20°C. Stable for one year after shipment.

Storage Buffer:

PBS with 0.02% sodium azide and 50% glycerol pH 7.3.

Aliquoting is unnecessary for -20°C storage

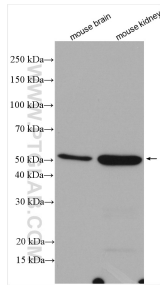
For technical support and original validation data for this product please contact:

T: 1 (888) 4PTGLAB (1-888-478-4522) (toll free in USA), or 1(312) 455-8498 (outside USA)

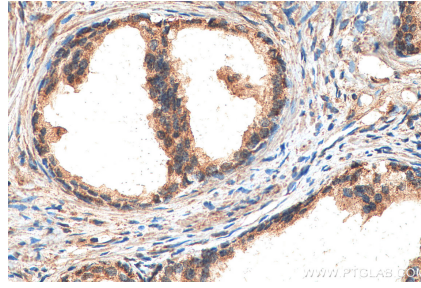
E: proteintech@ptglab.com
W: ptglab.com

This product is exclusively available under Proteintech Group brand and is not available to purchase from any other manufacturer.

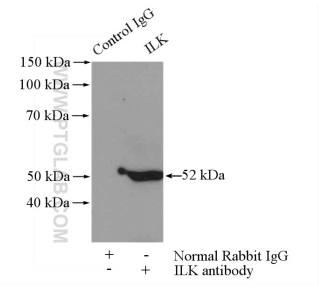
Selected Validation Data



Various lysates were subjected to SDS PAGE followed by western blot with 12955-1-AP (ILK antibody) at dilution of 1:1000 incubated at room temperature for 1.5 hours.



Immunohistochemical analysis of paraffin-embedded human prostate cancer tissue slide using 12955-1-AP (ILK antibody) at dilution of 1:200 (under 40x lens). Heat mediated antigen retrieval with Tris-EDTA buffer (pH 9.0).



IP Result of anti-ILK (IP:12955-1-AP, 4ug; Detection:12955-1-AP 1:800) with mouse kidney tissue lysate 4000ug.