

Lamin B1 Polyclonal ANTIBODY

Catalog Number: 12987-1-AP

232 Publications

Basic Information

Catalog Number:
12987-1-AP

Size:
55 µg/150 µl

Source:
Rabbit

Isotype:
IgG

Purification Method:
Antigen affinity purification
Immunogen Catalog Number:
AG3631

GenBank Accession Number:
BC012295

GeneID (NCBI):
4001

Full Name:
lamin B1

Calculated MW:
66 kDa

Observed MW:
66-70 kDa

Recommended Dilutions:

WB 1:1000-1:6000

IP 0.5-4.0 µg for IP and 1:500-1:2000 for WB

IHC 1:20-1:200

IF 1:50-1:500

Applications

Tested Applications:

FC, IF, IHC, IP, WB, ELISA

Cited Applications:

CHIP, IF, IHC, WB

Species Specificity:

human,mouse,rat

Cited Species:

canine, chicken, hamster, human, mouse, rat, swine

Note-IHC: suggested antigen retrieval with TE buffer pH 9.0; (*) Alternatively, antigen retrieval may be performed with citrate buffer pH 6.0

Positive Controls:

WB : HeLa cells; NIH/3T3 cells, mouse lung tissue, mouse kidney tissue, U-937 cells, SH-SY5Y cells, HepG2 cells, K-562 cells, mouse eye tissue, mouse spleen tissue, Y79 cells, mouse pancreas tissue

IP : HeLa cells;

IHC : human breast cancer tissue; human kidney tissue

IF : HepG2 cells; human skin cancer tissue, NIH/3T3 cells

Background Information

Lamins are components of the nuclear lamina, a fibrous layer on the nucleoplasmic side of the inner nuclear membrane, which is thought to provide a framework for the nuclear envelope and may also interact with chromatin. The nuclear lamina consists of a two-dimensional matrix of proteins located next to the inner nuclear membrane. The lamin family of proteins make up the matrix and are highly conserved in evolution. During mitosis, the lamina matrix is reversibly disassembled as the lamin proteins are phosphorylated. Vertebrate lamins consist of two types, A and B. This gene encodes one of the two B type proteins, B1. Expression of uncleavable mutant lamin A or B caused significant delays in the onset of chromatin condensation and nuclear shrinkage during apoptosis(PMD:11953316). This protein is not suitable for samples where the nuclear envelope has been removed.

Notable Publications

Author	Pubmed ID	Journal	Application
Pengpeng Liu	30243081	Biomed Pharmacother	WB
Dahu Li	25240053	J Mol Cell Biol	
Qingtian Zhu	30236985	Biochem Biophys Res Commun	WB

Storage

Storage:

Store at -20°C. Stable for one year after shipment.

Storage Buffer:

PBS with 0.1% sodium azide and 50% glycerol pH 7.3.

Aliquoting is unnecessary for -20°C storage

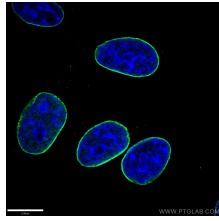
For technical support and original validation data for this product please contact:

T: 1 (888) 4PTGLAB (1-888-478-4522) (toll free in USA), or 1(312) 455-8498 (outside USA)

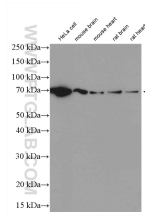
E: proteintech@ptglab.com
W: ptglab.com

This product is exclusively available under Proteintech Group brand and is not available to purchase from any other manufacturer.

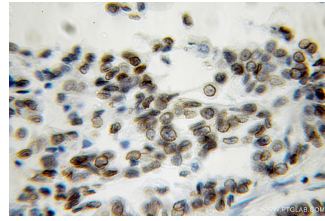
Selected Validation Data



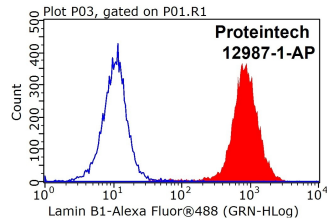
Immunofluorescent analysis of (-20l Ethanol) fixed HepG2 cells using 12987-1-AP(Lamin B1 antibody) at dilution of 1:200 and Alexa Fluor 488-conjugated AffiniPure Goat Anti-Rabbit IgG(H+L)



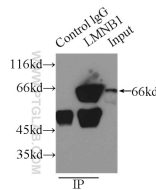
Lysates of various cell lines and tissues were subjected to SDS PAGE followed by western blot with 12987-1-AP(Lamin B1 antibody) at dilution of 1:3000 incubated at room temperature for 1.5 hours



Immunohistochemical analysis of paraffin-embedded human breast cancer using 12987-1-AP(LMNB1 antibody) at dilution of 1:100 (under 10x lens)



1X10⁶ HEK-293 cells were stained with 0.2ug Lamin B1 antibody (12987-1-AP, red) and control antibody (blue). Fixed with 90% MeOH blocked with 3% BSA (30 min). FITC-Goat anti-Rabbit IgG with dilution 1:100.



IP Result of anti-LMNB1 (IP:12987-1-AP, 3ug; Detection:12987-1-AP 1:1000) with HeLa cells lysate 2500ug.