

For Research Use Only

PGRMC1 Polyclonal antibody

Catalog Number: 12990-1-AP

Featured Product

22 Publications



Basic Information

Catalog Number:

12990-1-AP

Size:

150ul, Concentration: 1000 ug/ml by Nanodrop and 540 ug/ml by Bradford method using BSA as the standard;

Source:

Rabbit

Isotype:

IgG

Immunogen Catalog Number:

AG3643

GenBank Accession Number:

BC034238

GeneID (NCBI):

10857

UNIPROT ID:

O00264

Full Name:

progesterone receptor membrane component 1

Calculated MW:

195 aa, 22 kDa

Observed MW:

22-28 kDa

Purification Method:

Antigen affinity purification

Recommended Dilutions:

WB: 1:2000-1:12000

IP: 0.5-4.0 ug for 1.0-3.0 mg of total protein lysate

IHC: 1:50-1:500

IF/ICC: 1:200-1:800

Applications

Tested Applications:

WB, IHC, IF/ICC, IP, ELISA

Cited Applications:

WB, IHC, IF

Species Specificity:

human, mouse, rat

Cited Species:

human, mouse, rat, bovine

Note-IHC: suggested antigen retrieval with TE buffer pH 9.0; (*) Alternatively, antigen retrieval may be performed with citrate buffer pH 6.0

Positive Controls:

WB: HEK-293 cells, mouse liver tissue, HepG2 cells, MCF-7 cells, mouse kidney tissue, mouse ovary tissue

IP: MCF-7 cells,

IHC: human cervical cancer tissue, human lung cancer tissue, human ovary tumor tissue, mouse kidney tissue, mouse ovary tissue

IF/ICC: HEK-293 cells,

Background Information

Progesterone receptor membrane component 1 (PGRMC1) is a member of a multi-protein progesterone-binding complex. However, PGRMC1 shares homology with cytochrome b5-related proteins rather than hormone receptors (PMID: 18992768). It is a heme binding protein with binding sites for Src homology (SH2) and SH3 domain-containing proteins (PMID: 17583495). PGRMC1 is overexpressed in a variety of cancers, and thus represents an important biomarker for cancer progression and a potential target for anticancer drugs (PMID: 21730960). In nonmalignant tissues, PGRMC1 is highly expressed in the liver and kidney (PMID: 9705155; 20164297).

Notable Publications

Author	Pubmed ID	Journal	Application
Guangfeng Zhao	25232020	Biol Reprod	WB
H L Cai	26485545	Transl Psychiatry	WB
Uyen B Chu	26870805	EBioMedicine	WB

Storage

Storage:

Store at -20°C. Stable for one year after shipment.

Storage Buffer:

PBS with 0.02% sodium azide and 50% glycerol, pH7.3

Aliquoting is unnecessary for -20°C storage

*** 20ul sizes contain 0.1% BSA

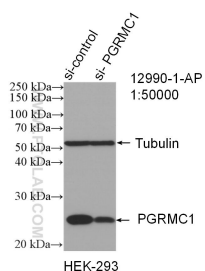
For technical support and original validation data for this product please contact:

T: 1 (888) 4PTGLAB (1-888-478-4522) (toll free in USA), or 1(312) 455-8498 (outside USA)

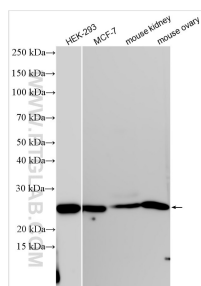
E: proteintech@ptglab.com
W: ptglab.com

This product is exclusively available under Proteintech Group brand and is not available to purchase from any other manufacturer.

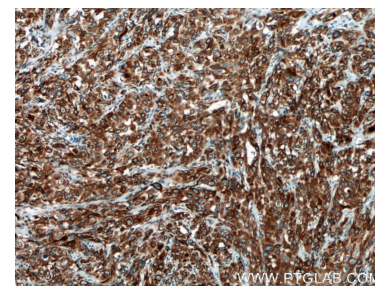
Selected Validation Data



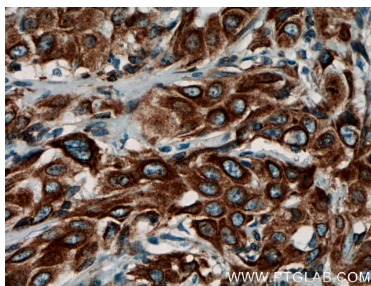
WB result of PGRMC1 antibody (12990-1-AP; 1:50000; incubated at room temperature for 1.5 hours) with sh-Control and sh-PGRMC1 transfected HEK-293 cells.



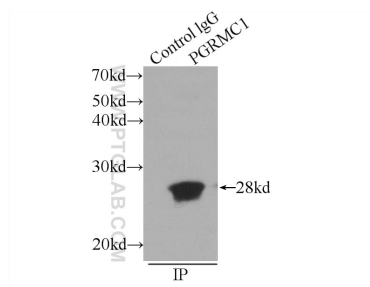
Various lysates were subjected to SDS PAGE followed by western blot with 12990-1-AP (PGRMC1 antibody) at dilution of 1:6000 incubated at room temperature for 1.5 hours.



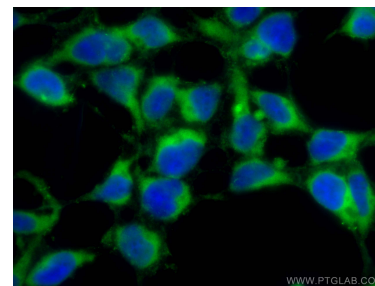
Immunohistochemical analysis of paraffin-embedded human cervical cancer tissue slide using 12990-1-AP (PGRMC1 antibody) at dilution of 1:200 (under 10x lens. Heat mediated antigen retrieval with Tris-EDTA buffer (pH 9.0).



Immunohistochemical analysis of paraffin-embedded human cervical cancer tissue slide using 12990-1-AP (PGRMC1 antibody) at dilution of 1:200 (under 40x lens. Heat mediated antigen retrieval with Tris-EDTA buffer (pH 9.0).



IP result of anti-PGRMC1 (IP:12990-1-AP, 3ug; Detection:12990-1-AP 1:1000) with MCF-7 cells lysate 1600ug.



Immunofluorescent analysis of (-20°C Ethanol) fixed HEK-293 cells using PGRMC1 antibody (12990-1-AP) at dilution of 1:400 and CoraLite®488-Conjugated Goat Anti-Rabbit IgG(H+L).