

For Research Use Only

# PTPRS Polyclonal antibody

Catalog Number: 13008-1-AP

Featured Product

4 Publications



## Basic Information

### Catalog Number:

13008-1-AP

### Size:

150UL, Concentration: 600 µg/ml by Bradford method using BSA as the standard;

### Source:

Rabbit

### Isotype:

IgG

### Immunogen Catalog Number:

AG3691

### GenBank Accession Number:

BC029496

### GeneID (NCBI):

5802

### Full Name:

protein tyrosine phosphatase, receptor type, S

### Calculated MW:

128aa, 14 kDa; 1948aa, 217 kDa

### Observed MW:

75-100 kDa

### Purification Method:

Antigen affinity purification

### Recommended Dilutions:

WB 1:500-1:1000

IP 0.5-4.0 µg for IP and 1:200-1:1000 for WB

IHC 1:50-1:500

## Applications

### Tested Applications:

FC, IHC, IP, WB, ELISA

### Cited Applications:

IF, IHC, WB

### Species Specificity:

human, mouse, rat

### Cited Species:

human, mouse, rat

**Note-IHC: suggested antigen retrieval with TE buffer pH 9.0; (\*) Alternatively, antigen retrieval may be performed with citrate buffer pH 6.0**

### Positive Controls:

WB: HeLa cells, mouse brain tissue

IP: mouse brain tissue,

IHC: human kidney tissue,

## Background Information

Type II a receptor protein tyrosine phosphatases (rPTP $\sigma$ ) are cell surface receptors important for nervous system development, function, and repair. The expression of rPTP $\sigma$  has previously been reported in b-cells and other target organs for INS although the probes chosen did not permit to distinguish between the splice variants. Proteolytic processing near the transmembrane domain generates an extracellular N-terminal E-domain of 130 kDa and a C-terminal P-domain of approximately 85 kDa of rPTP $\sigma$ , and the short splice variants rPTP $\sigma$  3 and 4 contain an E-domain of 95 kDa (PMID: 16552719). rPTP $\sigma$  expression was observed in tissue lysates of the adult mouse sensory-motor cortex and thoracic spinal cord (T8-T10) as a 75-80kDa immunoreactive band (PMID: 19780196).

## Notable Publications

Author	Pubmed ID	Journal	Application
Andrea M Gomez	25407677	Elife	WB
Jingjing Wu	33151000	J Gene Med	WB
Jun Zhong	30688376	J Cell Biochem	IF, WB

## Storage

### Storage:

Store at -20°C. Stable for one year after shipment.

### Storage Buffer:

PBS with 0.02% sodium azide and 50% glycerol pH 7.3.

Aliquoting is unnecessary for -20°C storage

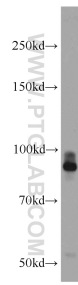
For technical support and original validation data for this product please contact:

T: 1 (888) 4PTGLAB (1-888-478-4522) (toll free in USA), or 1(312) 455-8498 (outside USA)

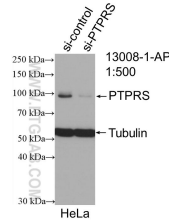
E: proteintech@ptglab.com  
W: ptglab.com

**This product is exclusively available under Proteintech Group brand and is not available to purchase from any other manufacturer.**

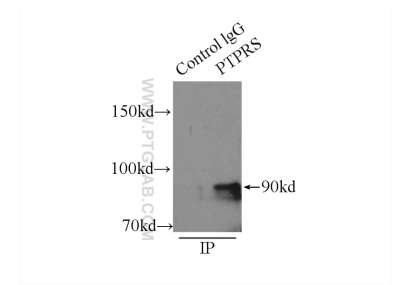
## Selected Validation Data



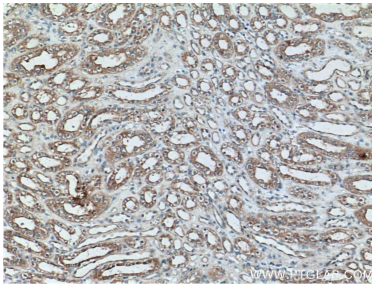
HeLa cells were subjected to SDS PAGE followed by western blot with 13008-1-AP (PTPRS antibody) at dilution of 1:1000 incubated at room temperature for 1.5 hours.



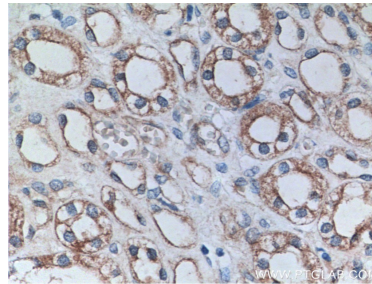
WB result of PTPRS antibody (13008-1-AP; 1:500; incubated at room temperature for 1.5 hours) with sh-Control and sh-PTPRS transfected HeLa cells.



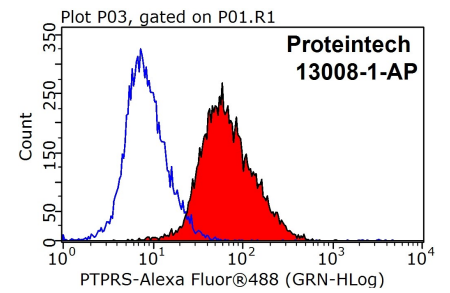
IP Result of anti-PTPRS (IP:13008-1-AP, 5ug; Detection:13008-1-AP 1:400) with mouse brain tissue lysate 6500ug.



Immunohistochemical analysis of paraffin-embedded human kidney tissue slide using 13008-1-AP (PTPRS antibody) at dilution of 1:200 (under 10x lens).



Immunohistochemical analysis of paraffin-embedded human kidney tissue slide using 13008-1-AP (PTPRS antibody) at dilution of 1:200 (under 40x lens).



1X10<sup>6</sup> HeLa cells were stained with 0.2ug PTPRS antibody (13008-1-AP, red) and control antibody (blue). Fixed with 90% MeOH blocked with 3% BSA (30 min). Alexa Fluor 488-conjugated AffiniPure Goat Anti-Rabbit IgG(H+L) with dilution 1:1000.