

For Research Use Only

ADRB2 Polyclonal antibody

Catalog Number: 13096-1-AP **6 Publications**



Basic Information

Catalog Number: 13096-1-AP	GenBank Accession Number: BC012481	Purification Method: Antigen affinity purification
Size: 150UL, Concentration: 380 µg/ml by Bradford method using BSA as the standard;	GeneID (NCBI): 154	Recommended Dilutions: WB 1:500-1:2000 IHC 1:50-1:200
Source: Rabbit	Full Name: adrenergic, beta-2-, receptor, surface	
Isotype: IgG	Calculated MW: 46 kDa	
Immunogen Catalog Number: AG3715	Observed MW: 50-55 kDa	

Applications

Tested Applications: FC, IHC, WB, ELISA	Positive Controls: WB : mouse heart tissue, rat heart tissue IHC : human heart tissue,
Cited Applications: IF, IHC, WB	
Species Specificity: human, mouse, rat	
Cited Species: human, mouse, rat	
Note-IHC: suggested antigen retrieval with TE buffer pH 9.0; (*) Alternatively, antigen retrieval may be performed with citrate buffer pH 6.0	

Background Information

Beta-2 adrenergic receptor (ADRB2), a member of the G protein-coupled receptor (GPCR) family, binds epinephrine with an approximately 30-fold greater affinity than it does norepinephrine. ADRB2 is directly linked to one of its final effectors, the class C L-type Ca²⁺ channel, Cav1.2 (PMID: 11441182). This receptor-channel complex also contains a G protein, an adenylyl cyclase, cyclic adenosine monophosphate- dependent protein kinase (PKA), and a counteracting phosphatase, PP2A. Different polymorphic forms, point mutations, and/or downregulation of the gene of ADRB2 are associated with nocturnal asthma, obesity and type 2 diabetes. This antibody detects ADRB2 with an apparent molecular weight of 50-55 kDa as has been shown by some researches (PMID: 25348166; 12502786; 29232706; 23984976; 19584355).

Notable Publications

Author	Pubmed ID	Journal	Application
Wei-Jun Wei	27432558	Oncol Rep	WB
M Ribeiro-da-Silva	30375409	Sci Rep	IF
Filipa Amaro	33120955	Int J Mol Sci	WB,IF

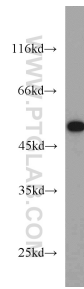
Storage

Storage:
Store at -20°C. Stable for one year after shipment.
Storage Buffer:
PBS with 0.02% sodium azide and 50% glycerol pH 7.3.
Aliquoting is unnecessary for -20°C storage

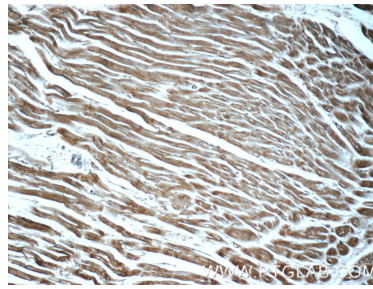
For technical support and original validation data for this product please contact:
T: 1 (888) 4PTGLAB (1-888-478-4522) (toll free in USA), or 1(312) 455-8498 (outside USA)
E: proteintech@ptglab.com
W: ptglab.com

This product is exclusively available under Proteintech Group brand and is not available to purchase from any other manufacturer.

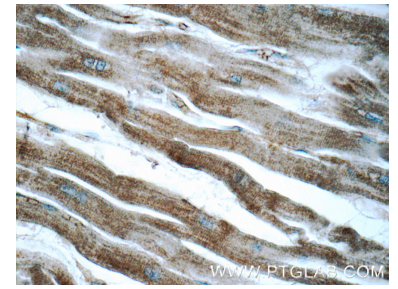
Selected Validation Data



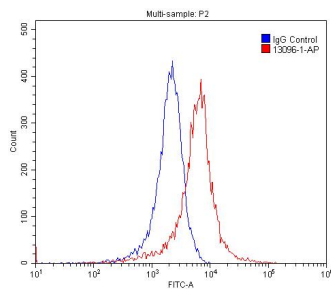
mouse heart tissue were subjected to SDS PAGE followed by western blot with 13096-1-AP (ADRB2 antibody) at dilution of 1:1000 incubated at room temperature for 1.5 hours.



Immunohistochemical analysis of paraffin-embedded human heart tissue slide using 13096-1-AP (ADRB2 Antibody) at dilution of 1:50 (under 10x lens).



Immunohistochemical analysis of paraffin-embedded human heart tissue slide using 13096-1-AP (ADRB2 Antibody) at dilution of 1:50 (under 40x lens).



1X10⁶ PC-3 cells were stained with 0.2ug ADRB2 antibody (13096-1-AP, red) and control antibody (blue). Fixed with 4% PFA blocked with 3% BSA (30 min). Alexa Fluor 488-conjugated AffiniPure Goat Anti-Rabbit IgG(H+L) with dilution 1:1500.