

For Research Use Only

PKD2L1 Polyclonal antibody

Catalog Number: 13117-2-AP

Featured Product

2 Publications



Basic Information

Catalog Number:

13117-2-AP

Size:

150ul, Concentration: 500 ug/ml by Nanodrop and 220 ug/ml by Bradford method using BSA as the standard;

Source:

Rabbit

Isotype:

IgG

Immunogen Catalog Number:

AG3807

GenBank Accession Number:

BC025665

GeneID (NCBI):

9033

UNIPROT ID:

Q9POL9

Full Name:

polycystic kidney disease 2-like 1

Calculated MW:

805 aa, 92 kDa

Observed MW:

75-85 kDa, 92 kDa

Purification Method:

Antigen affinity purification

Recommended Dilutions:

WB 1:500-1:1000

Applications

Tested Applications:

WB, ELISA

Cited Applications:

WB, IF

Species Specificity:

human, mouse, rat

Cited Species:

mouse

Positive Controls:

WB : human liver tissue,

Notable Publications

Author	Pubmed ID	Journal	Application
Liang Cao	36159391	Front Cell Neurosci	WB,IF
Emily Johnson	36691620	iScience	IF

Storage

Storage:

Store at -20°C. Stable for one year after shipment.

Storage Buffer:

PBS with 0.02% sodium azide and 50% glycerol pH 7.3.

Aliquoting is unnecessary for -20°C storage

*** 20ul sizes contain 0.1% BSA

For technical support and original validation data for this product please contact:

T: 1 (888) 4PTGLAB (1-888-478-4522) (toll free in USA), or 1(312) 455-8498 (outside USA)

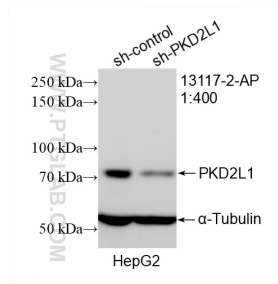
E: proteintech@ptglab.com
W: ptglab.com

This product is exclusively available under Proteintech Group brand and is not available to purchase from any other manufacturer.

Selected Validation Data



human liver tissue were subjected to SDS PAGE followed by western blot with 13117-2-AP (PKD2L1 antibody) at dilution of 1:500 incubated at room temperature for 1.5 hours.



WB result of PKD2L1 antibody (13117-2-AP; 1:400; incubated at room temperature for 1.5 hours) with sh-Control and sh-PKD2L1 transfected HepG2 cells.