

For Research Use Only

PLS1 Polyclonal antibody

Catalog Number: 13143-1-AP



Basic Information

Catalog Number: 13143-1-AP	GenBank Accession Number: BC031083	Purification Method: Antigen affinity purification
Size: 150ul , Concentration: 1000 ug/ml by Nanodrop;	GeneID (NCBI): 5357	Recommended Dilutions: WB 1:500-1:2000
Source: Rabbit	UNIPROT ID: Q14651	IHC 1:200-1:800
Isotype: IgG	Full Name: plastin 1 (l isoform)	IF/ICC 1:50-1:500
Immunogen Catalog Number: AG3532	Calculated MW: 629 aa, 70 kDa	
	Observed MW: 70 kDa	

Applications

Tested Applications: WB, IHC, IF/ICC, ELISA	Positive Controls:
Species Specificity: human, mouse	WB : A549 cells, mouse colon tissue, mouse kidney tissue
Note-IHC: suggested antigen retrieval with TE buffer pH 9.0; (*) Alternatively, antigen retrieval may be performed with citrate buffer pH 6.0	IHC : human kidney tissue, Human Colon cancer tissue
	IF/ICC : A549 cells,

Background Information

PLS1 also known as Fimbrin, Plastin 1, is an actin-binding protein in the absence of calcium. In the inner ear, PLS1 is required for stereocilia formation. PLS1 Mediates liquid packing of actin filaments that is necessary for stereocilia to grow to their proper dimensions. PLS1 is specifically expressed at high levels in the small intestine, colon, and kidney; relatively expressed at lower levels in the lung and stomach(PMID: 8139549). PLS1 is required for normal hearing in humans and mice. Mutations in PLS1, encoding fimbrin, cause autosomal dominant nonsyndromic hearing loss(NSHL)(PMID: 31397523).

Storage

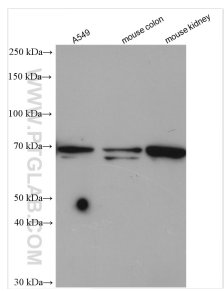
Storage:
Store at -20°C. Stable for one year after shipment.
Storage Buffer:
PBS with 0.02% sodium azide and 50% glycerol pH 7.3.
Aliquoting is unnecessary for -20°C storage

***** 20ul sizes contain 0.1% BSA**

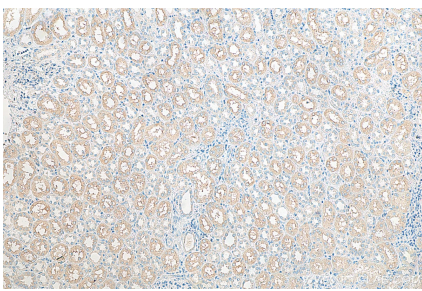
For technical support and original validation data for this product please contact:
T: 1 (888) 4PTGLAB (1-888-478-4522) (toll free in USA), or 1(312) 455-8498 (outside USA)
E: proteintech@ptglab.com
W: ptglab.com

This product is exclusively available under Proteintech Group brand and is not available to purchase from any other manufacturer.

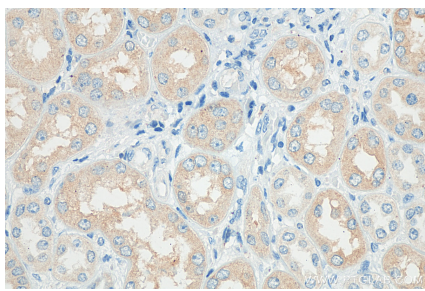
Selected Validation Data



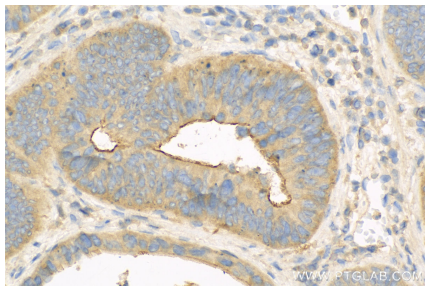
Various lysates were subjected to SDS PAGE followed by western blot with 13143-1-AP (PLS1 antibody) at dilution of 1:1000 incubated at room temperature for 1.5 hours.



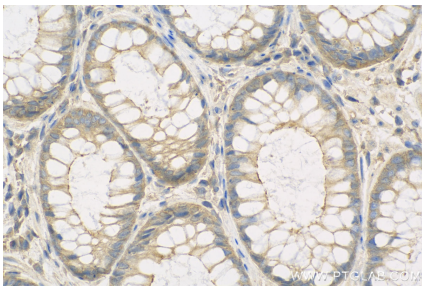
Immunohistochemical analysis of paraffin-embedded human kidney tissue slide using 13143-1-AP (PLS1 antibody) at dilution of 1:400 (under 10x lens). Heat mediated antigen retrieval with Tris-EDTA buffer (pH 9.0).



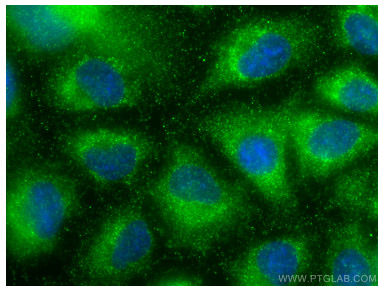
Immunohistochemical analysis of paraffin-embedded human kidney tissue slide using 13143-1-AP (PLS1 antibody) at dilution of 1:400 (under 40x lens). Heat mediated antigen retrieval with Tris-EDTA buffer (pH 9.0).



Immunohistochemical analysis of paraffin-embedded Human Colon cancer tissue slide using 13143-1-AP (PLS1 antibody) at dilution of 1:200 (under 40x lens). Heat mediated antigen retrieval with Tris-EDTA buffer (pH 9.0).



Immunohistochemical analysis of paraffin-embedded Human Colon cancer tissue slide using 13143-1-AP (PLS1 antibody) at dilution of 1:200 (under 40x lens). Heat mediated antigen retrieval with Tris-EDTA buffer (pH 9.0).



Immunofluorescent analysis of (-20°C Methanol) fixed A549 cells using PLS1 antibody (13143-1-AP) at dilution of 1:200 and CoraLite®488-Conjugated Goat Anti-Rabbit IgG(H+L).