

For Research Use Only

PPP3R1 Polyclonal antibody

Catalog Number: 13210-1-AP

7 Publications



Basic Information

Catalog Number:

13210-1-AP

Size:

150ul, Concentration: 500 ug/ml by Nanodrop and 233 ug/ml by Bradford method using BSA as the standard;

Source:

Rabbit

Isotype:

IgG

Immunogen Catalog Number:

AG3992

GenBank Accession Number:

BC027913

GeneID (NCBI):

5534

UNIPROT ID:

P63098

Full Name:

protein phosphatase 3 (formerly 2B), regulatory subunit B, alpha isoform

Calculated MW:

170 aa, 19 kDa

Observed MW:

19 kDa

Purification Method:

Antigen affinity purification

Recommended Dilutions:

WB 1:5000-1:50000

IP 0.5-4.0 ug for 1.0-3.0 mg of total protein lysate

IHC 1:500-1:2000

IF/ICC 1:50-1:500

Applications

Tested Applications:

WB, IHC, IF/ICC, IP, ELISA

Cited Applications:

WB, IF

Species Specificity:

human, mouse, rat

Cited Species:

human, mouse, chicken

Note-IHC: suggested antigen retrieval with TE buffer pH 9.0; (*) Alternatively, antigen retrieval may be performed with citrate buffer pH 6.0

Positive Controls:

WB: mouse brain tissue, HeLa cells, human stomach tissue, K-562 cells, rat brain tissue

IP: HeLa cells,

IHC: mouse testis tissue, human brain tissue

IF/ICC: HeLa cells,

Background Information

Protein phosphatase 3 (PPP3, formerly PP2B, Calcineurin), a serine/ threonine protein phosphatase, is a heterodimer composed of one catalytic subunit (PPP3C, Calcineurin A) and one regulatory subunit (PPP3R, Calcineurin B). PPP3R has two isoforms, PPP3R1 and PPP3R2. PPP3R1 is ubiquitously expressed in different tissues and is coded by the PPP3R1 gene which was mapped recently to human chromosome 2. PPP3R1 has four functional calcium-binding sites.

Notable Publications

Author	Pubmed ID	Journal	Application
Xiju He	28526717	Proc Natl Acad Sci U S A	WB
Hong Cao	35235867	Acta Biomater	WB
Ke Xiao	30094741	Biol Trace Elem Res	WB

Storage

Storage:

Store at -20°C. Stable for one year after shipment.

Storage Buffer:

PBS with 0.02% sodium azide and 50% glycerol, pH7.3

Aliquoting is unnecessary for -20°C storage

*** 20ul sizes contain 0.1% BSA

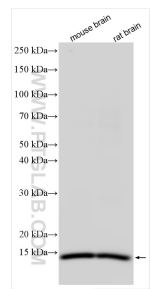
For technical support and original validation data for this product please contact:

T: 1 (888) 4PTGLAB (1-888-478-4522) (toll free in USA), or 1(312) 455-8498 (outside USA)

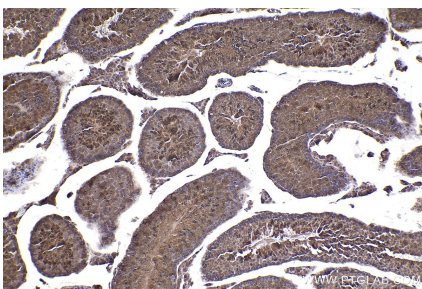
E: proteintech@ptglab.com
W: ptglab.com

This product is exclusively available under Proteintech Group brand and is not available to purchase from any other manufacturer.

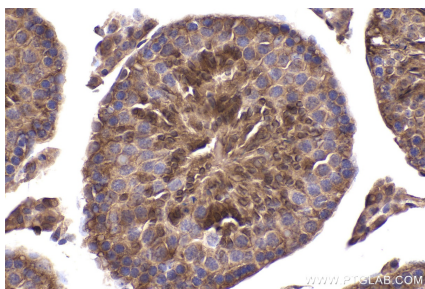
Selected Validation Data



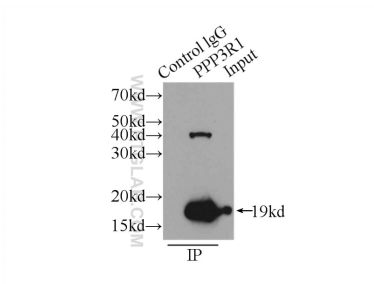
mouse brain tissue were subjected to SDS PAGE followed by western blot with 13210-1-AP (PPP3R1 antibody) at dilution of 1:20000 incubated at room temperature for 1.5 hours.



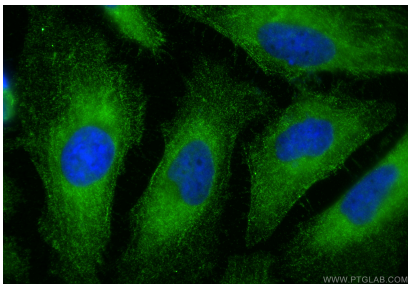
Immunohistochemical analysis of paraffin-embedded mouse testis tissue slide using 13210-1-AP (PPP3R1 antibody) at dilution of 1:1000 (under 10x lens). Heat mediated antigen retrieval with Tris-EDTA buffer (pH 9.0).



Immunohistochemical analysis of paraffin-embedded mouse testis tissue slide using 13210-1-AP (PPP3R1 antibody) at dilution of 1:1000 (under 40x lens). Heat mediated antigen retrieval with Tris-EDTA buffer (pH 9.0).



IP result of anti-PPP3R1 (IP:13210-1-AP, 3ug; Detection:13210-1-AP 1:300) with HeLa cells lysate 5000ug.



Immunofluorescent analysis of (-20°C Ethanol) fixed HeLa cells using PPP3R1 antibody (13210-1-AP) at dilution of 1:200 and Coralite®488-Conjugated Goat Anti-Rabbit IgG(H+L) (SA00013-2).