

For Research Use Only

ATP12A Polyclonal ANTIBODY

Catalog Number: 13231-1-AP



Basic Information

Catalog Number:
13231-1-AP

Size:
20 µg/150 µl

Source:
Rabbit

Isotype:
IgG

Purification Method:
Antigen affinity purification

Immunogen Catalog Number:
AG4105

GenBank Accession Number:
BC031609

GeneID (NCBI):
479

Full Name:
ATPase, H⁺/K⁺ transporting, nongastric, alpha
polypeptide

Calculated MW:
1045aa, 116 kDa

Observed MW:
100-110 kDa

Recommended Dilutions:
WB 1:500-1:1000

Applications

Tested Applications:
WB, ELISA

Species Specificity:
human

**Note: suggested antigen retrieval with TE
buffer pH 9.0; (*) Alternatively, antigen
retrieval may be performed with citrate
buffer pH 6.0**

Positive Controls:

WB : HEK-293 cells; A431 cells

Background Information

ATP12A, also named as ATP1A1 and Proton pump, belongs to the family of P-type cation transport ATPases. It catalyzes the hydrolysis of ATP coupled with the exchange of H⁺ and K⁺ ions across the plasma membrane. ATP12A is responsible for potassium absorption in various tissues. Expression of ATP12A is increased in benign prostate hyperplasia and tumor tissues.

Notable Publications

Author	Pubmed ID	Journal	Application
--------	-----------	---------	-------------

Storage

Storage:

Store at -20°C. Stable for one year after shipment.

Storage Buffer:

PBS with 0.1% sodium azide and 50% glycerol pH 7.3.

Aliquoting is unnecessary for -20°C storage

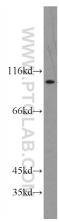
For technical support and original validation data for this product please contact:

T: 1 (888) 4PTGLAB (1-888-478-4522) (toll free in USA), or 1(312) 455-8498 (outside USA)

E: proteintech@ptglab.com
W: ptglab.com

This product is exclusively available under Proteintech Group brand and is not available to purchase from any other manufacturer.

Selected Validation Data



HEK-293 cells were subjected to SDS PAGE followed by western blot with 13231-1-AP (ATP12A Antibody) at dilution of 1:500 incubated at room temperature for 1.5 hours