

For Research Use Only

MLXIPL Polyclonal antibody

Catalog Number: 13256-1-AP

16 Publications



Basic Information

Catalog Number:

13256-1-AP

Size:

150ul, Concentration: 500 ug/ml by Nanodrop and 280 ug/ml by Bradford method using BSA as the standard;

Source:

Rabbit

Isotype:

IgG

Immunogen Catalog Number:

AG3481

GenBank Accession Number:

BC012925

GeneID (NCBI):

51085

UNIPROT ID:

Q9NP71

Full Name:

MLX interacting protein-like

Calculated MW:

852 aa, 93 kDa

Observed MW:

65 kDa

Purification Method:

Antigen affinity purification

Recommended Dilutions:

WB 1:500-1:1000

IP 0.5-4.0 ug for 1.0-3.0 mg of total protein lysate

Applications

Tested Applications:

WB, IP, ELISA

Cited Applications:

WB, IHC, IF

Species Specificity:

human, mouse, rat

Cited Species:

human, mouse

Positive Controls:

WB : mouse liver tissue, human liver tissue, HepG2 cells, HeLa cells, rat liver tissue

IP : HepG2 cells,

Background Information

Carbohydrate response element-binding protein (ChREBP), also known as MLXIPL, is a glucose-responsive transcription factor that has a fundamental role in the glucose-mediated induction of genes involved in hepatic glycolysis and lipogenesis. Circulating blood glucose levels affect ChREBP activity in hepatocytes largely by post-translational mechanisms that include phosphorylation-dependent subcellular localization [PMID:21665952]. It enhances expression of the liver pyruvate kinase (LPK) gene and all lipogenic enzyme genes resulting in the conversion of excess dietary carbohydrate into triglycerides that can be stored as fat [PMID:15118080]. Molecular Weight of ChREBP splice variants: 62/78/91/93 kDa.

Notable Publications

Author	Pubmed ID	Journal	Application
Yongyao Gao	35620283	Front Pharmacol	
Wenxi He	31076985	Dig Dis Sci	WB
Dandan Wang	33950051	Food Funct	WB

Storage

Storage:

Store at -20°C. Stable for one year after shipment.

Storage Buffer:

PBS with 0.02% sodium azide and 50% glycerol pH 7.3.

Aliquoting is unnecessary for -20°C storage

*** 20ul sizes contain 0.1% BSA

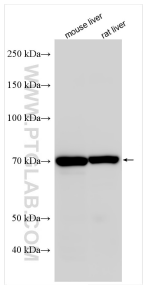
For technical support and original validation data for this product please contact:

T: 1 (888) 4PTGLAB (1-888-478-4522) (toll free in USA), or 1(312) 455-8498 (outside USA)

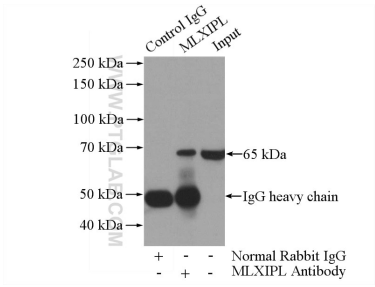
E: proteintech@ptglab.com
W: ptglab.com

This product is exclusively available under Proteintech Group brand and is not available to purchase from any other manufacturer.

Selected Validation Data



Various lysates were subjected to SDS PAGE followed by western blot with 13256-1-AP (MLXIPL antibody) at dilution of 1:800 incubated at room temperature for 1.5 hours.



IP result of anti-MLXIPL (IP:13256-1-AP, 4ug; Detection:13256-1-AP 1:1000) with HepG2 cells lysate 3600ug.