

For Research Use Only

# Gamma Adaptin Polyclonal antibody



Catalog Number: 13258-1-AP **4 Publications**

## Basic Information

<b>Catalog Number:</b> 13258-1-AP	<b>GenBank Accession Number:</b> BC036283	<b>Purification Method:</b> Antigen affinity purification
<b>Size:</b> 150ul , Concentration: 400 µg/ml by Nanodrop and 333 µg/ml by Bradford method using BSA as the standard;	<b>GeneID (NCBI):</b> 164	<b>Recommended Dilutions:</b> WB 1:500-1:2000 IHC 1:20-1:200
<b>Source:</b> Rabbit	<b>Full Name:</b> adaptor-related protein complex 1, gamma 1 subunit	
<b>Isotype:</b> IgG	<b>Calculated MW:</b> 825 aa, 92 kDa	
<b>Immunogen Catalog Number:</b> AG3696	<b>Observed MW:</b> 91 kDa	

## Applications

<b>Tested Applications:</b> IHC, WB, ELISA	<b>Positive Controls:</b> WB : HEK-293 cells, mouse skeletal muscle tissue IHC : human pancreas cancer tissue,
<b>Cited Applications:</b> IF, WB	
<b>Species Specificity:</b> human, mouse, rat	
<b>Cited Species:</b> human, mouse	
<b>Note-IHC: suggested antigen retrieval with TE buffer pH 9.0; (*) Alternatively, antigen retrieval may be performed with citrate buffer pH 6.0</b>	

## Background Information

### Notable Publications

Author	Pubmed ID	Journal	Application
Yan Huang	31552246	Front Cell Dev Biol	IF
Boris Simonetti	31576058	Nat Cell Biol	WB
Xin-Tai Wang	31244610	Front Cell Neurosci	WB

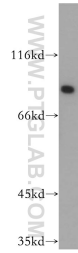
## Storage

**Storage:**  
Store at -20°C. Stable for one year after shipment.  
**Storage Buffer:**  
PBS with 0.02% sodium azide and 50% glycerol pH 7.3.  
Aliquoting is unnecessary for -20°C storage

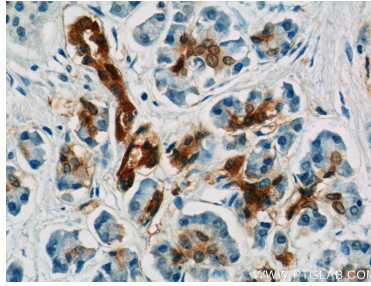
For technical support and original validation data for this product please contact:  
T: 1 (888) 4PTGLAB (1-888-478-4522) (toll free in USA), or 1(312) 455-8498 (outside USA)  
E: proteintech@ptglab.com  
W: ptglab.com

**This product is exclusively available under Proteintech Group brand and is not available to purchase from any other manufacturer.**

## Selected Validation Data



HEK-293 cells were subjected to SDS PAGE followed by western blot with 13258-1-AP (AP1G1 antibody) at dilution of 1:400 incubated at room temperature for 1.5 hours.



Immunohistochemical analysis of paraffin-embedded human pancreas cancer tissue slide using 13258-1-AP (Gamma adaptin Antibody) at dilution of 1:50 (under 40x lens).