

For Research Use Only

GGH Polyclonal antibody

Catalog Number: 13264-1-AP

3 Publications



Basic Information

Catalog Number:

13264-1-AP

Size:

150ul, Concentration: 700 ug/ml by Nanodrop and 400 ug/ml by Bradford method using BSA as the standard;

Source:

Rabbit

Isotype:

IgG

Immunogen Catalog Number:

AG3939

GenBank Accession Number:

BC025025

GeneID (NCBI):

8836

UNIPROT ID:

Q92820

Full Name:

gamma-glutamyl hydrolase (conjugase, folylpolyglutamyl hydrolase)

Calculated MW:

318 aa, 36 kDa

Observed MW:

30-37 kDa, 55 kDa

Purification Method:

Antigen affinity purification

Recommended Dilutions:

WB: 1:1000-1:5000

IP: 0.5-4.0 ug for 1.0-3.0 mg of total protein lysate

IHC: 1:100-1:500

Applications

Tested Applications:

WB, IHC, IP, ELISA

Cited Applications:

WB, IHC, IF

Species Specificity:

human, mouse, rat

Cited Species:

human

Positive Controls:

WB: HL-60 cells, MCF-7 cells, HepG2 cells, HT-1080 cells

IP: HepG2 cells,

IHC: human kidney tissue,

Note-IHC: suggested antigen retrieval with TE buffer pH 9.0; (*) Alternatively, antigen retrieval may be performed with citrate buffer pH 6.0

Background Information

GGH (Gamma glutamyl hydrolase), also named as GH or Conjugase, is a key lysosomal enzyme involved in the metabolism of folic acid and in the action of antifolate drugs (PMID: 16945597). GGH catalyzes the removal of γ -linked polyglutamates from the intracellular folylpolyglutamates to yield folylmonoglutamate coenzymes (PMID: 9614206). The full-length protein has a calculated molecular mass of 36 kDa, contains four potential asparagine glycosylation sites, and was predicted to have a 24-amino-acid signal peptide (PMID: 8816764). GGH can form homodimer which contains two potential active sites (PMID: 16945597). Some bands can be detected by SDS-PAGE: 35-37kDa (full-length), 55kDa (glycosylated form) and 30-33kDa (signal peptide removed) (PMID: 8621474).

Notable Publications

Author	Pubmed ID	Journal	Application
Xiaochao Tan	38662435	J Clin Invest	WB
Yao Chen	38259297	Front Pharmacol	WB
Cheng Zhu	37798609	Reprod Sci	IHC,IF

Storage

Storage:

Store at -20°C. Stable for one year after shipment.

Storage Buffer:

PBS with 0.02% sodium azide and 50% glycerol, pH7.3

Aliquoting is unnecessary for -20°C storage

*** 20ul sizes contain 0.1% BSA

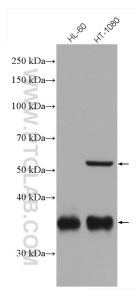
For technical support and original validation data for this product please contact:

T: 1 (888) 4PTGLAB (1-888-478-4522) (toll free in USA), or 1(312) 455-8498 (outside USA)

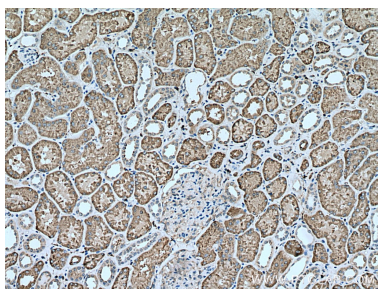
E: proteintech@ptglab.com
W: ptglab.com

This product is exclusively available under Proteintech Group brand and is not available to purchase from any other manufacturer.

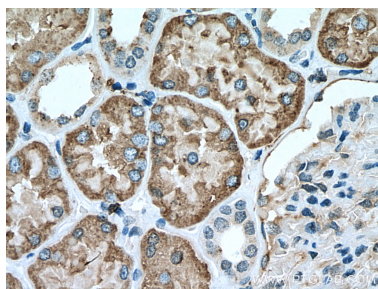
Selected Validation Data



Various lysates were subjected to SDS PAGE followed by western blot with 13264-1-AP (GGH antibody) at dilution of 1:3000 incubated at room temperature for 1.5 hours.



Immunohistochemical analysis of paraffin-embedded human kidney tissue slide using 13264-1-AP (GGH antibody) at dilution of 1:200 (under 10x lens). Heat mediated antigen retrieval with Tris-EDTA buffer (pH 9.0).



Immunohistochemical analysis of paraffin-embedded human kidney tissue slide using 13264-1-AP (GGH antibody) at dilution of 1:200 (under 40x lens). Heat mediated antigen retrieval with Tris-EDTA buffer (pH 9.0).



IP result of anti-GGH (IP:13264-1-AP, 4ug; Detection:13264-1-AP 1:2000) with HepG2 cells lysate 1800 ug.