

For Research Use Only

CTAGE1 Polyclonal ANTIBODY



Catalog Number: 13267-1-AP **1 Publications**

Basic Information

Catalog Number:

13267-1-AP

Size:

150UL, Concentration: 133 µg/ml by Bradford method using BSA as the standard;

Source:

Rabbit

Isotype:

IgG

Immunogen Catalog Number:

AG3948

GenBank Accession Number:

BC031065

GeneID (NCBI):

64693

Full Name:

cutaneous T-cell lymphoma-associated antigen 1

Calculated MW:

754 aa, 89 kDa

Observed MW:

86-120 kDa

Purification Method:

Antigen affinity purification

Recommended Dilutions:

WB 1:500-1:1000

IP 0.5-4.0 µg for IP and 1:500-1:1000 for WB

Applications

Tested Applications:

IP, WB, ELISA

Cited Applications:

WB

Species Specificity:

human

Cited Species:

human

Positive Controls:

WB: Jurkat cells, HeLa cells

IP: HeLa cells,

Background Information

Notable Publications

Author	Pubmed ID	Journal	Application
Ivan V Litvinov	24850846	Clin Cancer Res	WB

Storage

Storage:

Store at -20°C. Stable for one year after shipment.

Storage Buffer:

PBS with 0.02% sodium azide and 50% glycerol pH 7.3.

Aliquoting is unnecessary for -20°C storage

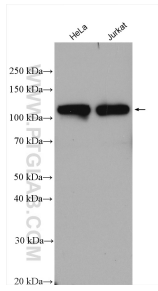
For technical support and original validation data for this product please contact:

T: 1 (888) 4PTGLAB (1-888-478-4522) (toll free in USA), or 1(312) 455-8498 (outside USA)

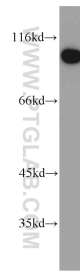
E: proteintech@ptglab.com
W: ptglab.com

This product is exclusively available under Proteintech Group brand and is not available to purchase from any other manufacturer.

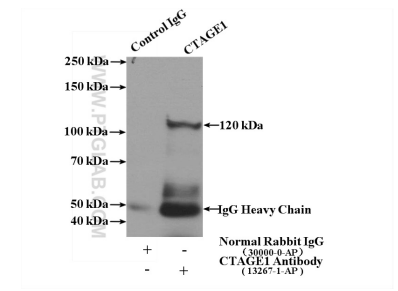
Selected Validation Data



Various lysates were subjected to SDS PAGE followed by western blot with 13267-1-AP (CTAGE1 antibody) at dilution of 1:600 incubated at room temperature for 1.5 hours.



Jurkat cells were subjected to SDS PAGE followed by western blot with 13267-1-AP (CTAGE1 antibody) at dilution of 1:800 incubated at room temperature for 1.5 hours.



IP Result of anti-CTAGE1 (IP:13267-1-AP, 4ug; Detection:13267-1-AP 1:500) with HeLa cells lysate 2400ug.