

For Research Use Only

# ATP2C1 Polyclonal ANTIBODY

Catalog Number: 13310-1-AP



## Basic Information

**Catalog Number:**

13310-1-AP

**Size:**

150UL, Concentration: 200 µg/ml by Bradford method using BSA as the standard;

**Source:**

Rabbit

**Isotype:**

IgG

**Immunogen Catalog Number:**

AG4143

**GenBank Accession Number:**

BC028139

**GeneID (NCBI):**

27032

**Full Name:**

ATPase, Ca<sup>++</sup> transporting, type 2C, member 1

**Calculated MW:**

919 aa, 101 kDa

**Observed MW:**

95-103 kDa

**Purification Method:**

Antigen affinity purification

**Recommended Dilutions:**

WB 1:500-1:1000  
IP 0.5-4.0 µg for IP and 1:500-1:1000 for WB  
IF 1:20-1:200

## Applications

**Tested Applications:**

IF, IP, WB, ELISA

**Species Specificity:**

human, mouse, rat

**Positive Controls:**

WB: HeLa cells, A431 cells, human brain tissue

IP: mouse kidney tissue,

IF: HeLa cells,

## Background Information

### Storage

**Storage:**

Store at -20°C. Stable for one year after shipment.

**Storage Buffer:**

PBS with 0.02% sodium azide and 50% glycerol pH 7.3.

Aliquoting is unnecessary for -20°C storage

For technical support and original validation data for this product please contact:

T: 1 (888) 4PTGLAB (1-888-478-4522) (toll free in USA), or 1(312) 455-8498 (outside USA)

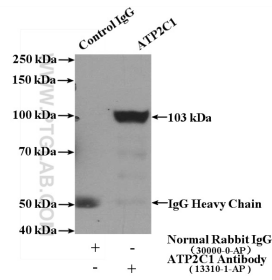
E: [proteintech@ptglab.com](mailto:proteintech@ptglab.com)  
W: [ptglab.com](http://ptglab.com)

This product is exclusively available under Proteintech Group brand and is not available to purchase from any other manufacturer.

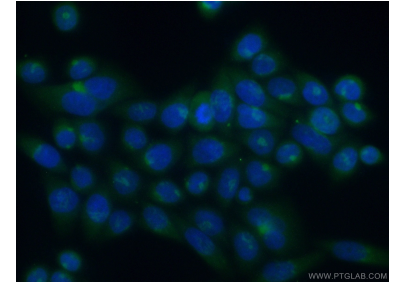
## Selected Validation Data



HeLa cells were subjected to SDS PAGE followed by western blot with 13310-1-AP (ATP2C1 antibody) at dilution of 1:400 incubated at room temperature for 1.5 hours.



IP Result of anti-ATP2C1 (IP:13310-1-AP, 4ug; Detection:13310-1-AP 1:500) with mouse kidney tissue lysate 4000ug.



Immunofluorescent analysis of (10% Formaldehyde) fixed HeLa cells using 13310-1-AP (ATP2C1 antibody) at dilution of 1:50 and Alexa Fluor 488-conjugated AffiniPure Goat Anti-Rabbit IgG(H+L).