

For Research Use Only

# Cytoglobin Polyclonal antibody



Catalog Number: 13317-1-AP

Featured Product

5 Publications

## Basic Information

**Catalog Number:**

13317-1-AP

**Size:**

150ul , Concentration: 550 µg/ml by Nanodrop and 413 µg/ml by Bradford method using BSA as the standard;

**Source:**

Rabbit

**Isotype:**

IgG

**Immunogen Catalog Number:**

AG4161

**GenBank Accession Number:**

BC029798

**GeneID (NCBI):**

114757

**Full Name:**

cytoglobin

**Calculated MW:**

190 aa, 21 kDa

**Observed MW:**

21-29 kDa

**Purification Method:**

Antigen affinity purification

**Recommended Dilutions:**

WB 1:500-1:3000

IHC 1:20-1:200

## Applications

**Tested Applications:**

IHC, WB, ELISA

**Cited Applications:**

IF, IHC, WB

**Species Specificity:**

human, mouse, rat

**Cited Species:**

human, mouse, rat

**Note-IHC: suggested antigen retrieval with TE buffer pH 9.0; (\*) Alternatively, antigen retrieval may be performed with citrate buffer pH 6.0**

**Positive Controls:**

**WB:** mouse heart tissue, human heart tissue, human uterus tissue, mouse brain tissue, mouse kidney tissue, mouse lung tissue, mouse small intestine tissue, mouse spleen tissue, mouse stomach tissue, PC-3 cells, rat kidney tissue, Transfected HEK-293 cells

**IHC:** human liver cancer tissue, human heart tissue, human liver tissue, human prostate cancer tissue, human stomach tissue

## Background Information

Cytoglobin, also named as Histoglobin, HGb, STAP and CYGB, belongs to the globin family. Cytoglobin may have a protective function during conditions of oxidative stress. It may be involved in intracellular oxygen storage or transfer. It serves as a defensive mechanism against oxidative stress both in vitro and in vivo. (PMID:21224051) Cytoglobin is a ubiquitously expressed hexacoordinate hemoglobin that may facilitate diffusion of oxygen through tissues. The protein, with calculated MW of 21 kd, runs as a 29kd one in canine retina, kidney, liver, lung, and heart. It may be caused by posttranslational modification of the protein. Various immuno-staining patterns were reported including nuclear, cytoplasm and extracellular location.

## Notable Publications

Author	Pubmed ID	Journal	Application
Qin Feng	30417486	J Cell Physiol	IHC
Brenda Lilly	29969687	Vascul Pharmacol	WB
Elisa B Randi	31910047	Antioxid Redox Signal	WB

## Storage

**Storage:**

Store at -20°C. Stable for one year after shipment.

**Storage Buffer:**

PBS with 0.02% sodium azide and 50% glycerol pH 7.3.

Aliquoting is unnecessary for -20°C storage

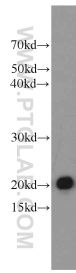
For technical support and original validation data for this product please contact:

T: 1 (888) 4PTGLAB (1-888-478-4522) (toll free in USA), or 1(312) 455-8498 (outside USA)

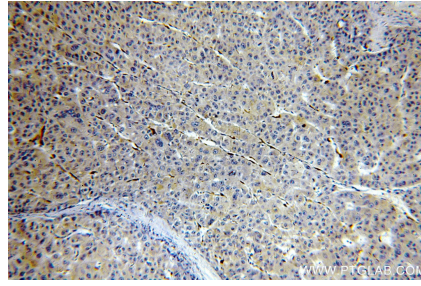
E: proteintech@ptglab.com  
W: ptglab.com

**This product is exclusively available under Proteintech Group brand and is not available to purchase from any other manufacturer.**

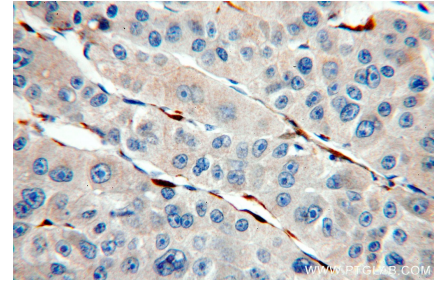
## Selected Validation Data



mouse heart tissue were subjected to SDS PAGE followed by western blot with 13317-1-AP (Cytoglobin antibody) at dilution of 1:1500 incubated at room temperature for 1.5 hours.



Immunohistochemical analysis of paraffin-embedded human liver cancer using 13317-1-AP (Cytoglobin antibody) at dilution of 1:100 (under 10x lens).



Immunohistochemical analysis of paraffin-embedded human liver cancer using 13317-1-AP (Cytoglobin antibody) at dilution of 1:100 (under 40x lens).