

CISD2

Polyclonal ANTIBODY

Catalog Number: 13318-1-AP

Featured Product

12 Publications

Basic Information

Catalog Number:
13318-1-AP

Size:
52 µg/150 µl

Source:
Rabbit

Isotype:
IgG

Purification Method:
Antigen affinity purification

Immunogen Catalog Number:
AG4172

GenBank Accession Number:
BC032300

GeneID (NCBI):
493856

Full Name:
CDGSH iron sulfur domain 2

Calculated MW:
135aa, 15 kDa

Observed MW:
13-15 kDa

Recommended Dilutions:

WB 1:500-1:2000

IP 0.5-4.0 µg for IP and 1:500-1:1000 for WB

IHC 1:20-1:200

IF 1:20-1:200

Applications

Tested Applications:

FC, IF, IHC, IP, WB, ELISA

Cited Applications:

IF, IH, IHC, WB

Species Specificity:

human,mouse,rat

Cited Species:

Drosophila, human, mouse, rat

Note: suggested antigen retrieval with TE buffer pH 9.0; (*) Alternatively, antigen retrieval may be performed with citrate buffer pH 6.0

Positive Controls:

WB : mouse kidney tissue; HeLa cells, human brain tissue, mouse brain tissue, mouse heart tissue

IP : mouse brain tissue;

IHC : human kidney tissue; human brain tissue, human lung tissue, human ovary tissue, human pancreas tissue, human spleen tissue, human testis tissue

IF : HepG2 cells;

Background Information

CISD2 gene encodes a 15 kDa CDGSH iron-sulfur domain-containing protein 2, which is also named Mner1 or NAF-1, this protein was reported on endoplasmic reticulum membrane or mitochondrion outer membrane. Defects in CISD2 are the cause of Wolfram syndrome type 2 (WFS2), a rare disorder characterized by juvenile-onset insulin-dependent diabetes mellitus with optic atrophy. CISD2 regulates autophagy program by interacting BCL2, contributing to antagonize BECN1-mediated cellular autophagy at the endoplasmic reticulum.

Notable Publications

Author	Pubmed ID	Journal	Application
Luxin Liu	25134919	Med Oncol	WB, IHC
Bin Chen	26722601	Int J Clin Exp Pathol	WB, IHC
Simin Lu	25422446	Proc Natl Acad Sci U S A	WB

Storage

Storage:

Store at -20°C. Stable for one year after shipment.

Storage Buffer:

PBS with 0.02% sodium azide and 50% glycerol pH 7.3.

Aliquoting is unnecessary for -20°C storage

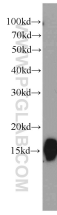
For technical support and original validation data for this product please contact:

T: 1 (888) 4PTGLAB (1-888-478-4522) (toll free in USA), or 1(312) 455-8498 (outside USA)

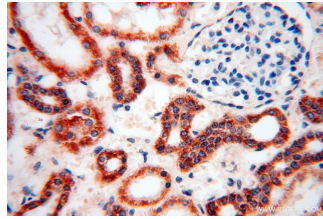
E: proteintech@ptglab.com
W: ptglab.com

This product is exclusively available under Proteintech Group brand and is not available to purchase from any other manufacturer.

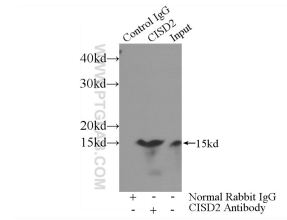
Selected Validation Data



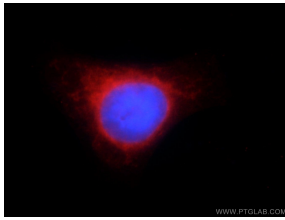
mouse kidney tissue were subjected to SDS PAGE followed by western blot with 13318-1-AP(CISD2 antibody) at dilution of 1:1000 incubated at room temperature for 1.5 hours



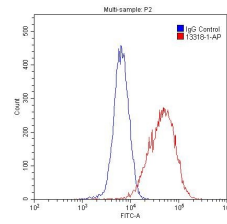
Immunohistochemical of paraffin-embedded human kidney using 13318-1-AP(CISD2 antibody) at dilution of 1:100 (under 40x lens)



IP Result of anti-CISD2 (IP:13318-1-AP, 3ug; Detection:13318-1-AP 1:700) with mouse brain tissue lysate 4000ug.



Immunofluorescent analysis of HepG2 cells using 13318-1-AP(CISD2 antibody) at dilution of 1:50 and Rhodamine-Goat anti-Rabbit IgG



1X10⁶ HepG2 cells were stained with 0.2ug CISD2 antibody (13318-1-AP, red) and control antibody (blue). Fixed with 4% PFA blocked with 3% BSA (30 min). Alexa Fluor 488-conjugated AffiniPure Goat Anti-Rabbit IgG(H+L) with dilution 1:1500.