

For Research Use Only

Glycerokinase Polyclonal antibody

Catalog Number: 13360-1-AP

12 Publications



Basic Information

Catalog Number:

13360-1-AP

GenBank Accession Number:

BC037549

Purification Method:

Antigen affinity purification

Size:

150ul, Concentration: 1000 ug/ml by Nanodrop and 600 ug/ml by Bradford method using BSA as the standard;

GeneID (NCBI):

2710

Recommended Dilutions:

WB 1:500-1:2000
IP 0.5-4.0 ug for 1.0-3.0 mg of total protein lysate
IF/ICC 1:50-1:500

Source:

Rabbit

UNIPROT ID:

P32189

Full Name:

glycerol kinase

Isotype:

IgG

Calculated MW:

524 aa, 57 kDa

Immunogen Catalog Number:

AG4175

Observed MW:

60-65 kDa

Applications

Tested Applications:

WB, IF/ICC, IP, ELISA

Cited Applications:

WB, IHC, IF, RIP

Species Specificity:

human, mouse, rat

Cited Species:

human, mouse, pig

Positive Controls:

WB : HepG2 cells, mouse kidney tissue, mouse liver tissue, mouse testis tissue

IP : HepG2 cells,

IF/ICC : HepG2 cells,

Notable Publications

Author	Pubmed ID	Journal	Application
Ni Zeng	28960355	J Appl Toxicol	WB
Mari J Aaltonen	34785538	Life Sci Alliance	WB
Hongshuo Zhang	35499042	J Adv Res	IHC

Storage

Storage:

Store at -20°C. Stable for one year after shipment.

Storage Buffer:

PBS with 0.02% sodium azide and 50% glycerol pH 7.3.

Aliquoting is unnecessary for -20°C storage

*** 20ul sizes contain 0.1% BSA

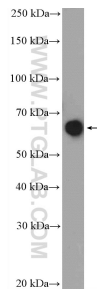
For technical support and original validation data for this product please contact:

T: 1 (888) 4PTGLAB (1-888-478-4522) (toll free in USA), or 1(312) 455-8498 (outside USA)

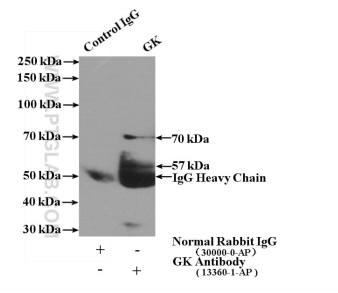
E: proteintech@ptglab.com
W: ptglab.com

This product is exclusively available under Proteintech Group brand and is not available to purchase from any other manufacturer.

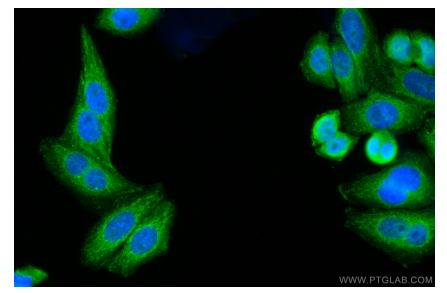
Selected Validation Data



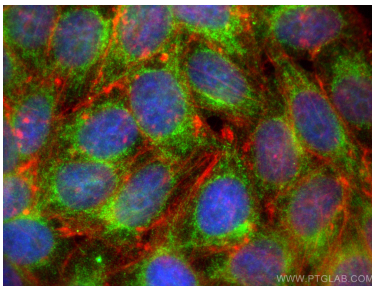
HepG2 cells were subjected to SDS PAGE followed by western blot with 13360-1-AP (Glycerokinase antibody at dilution of 1:1000 incubated at room temperature for 1.5 hours.



IP result of anti-Glycerokinase (IP:13360-1-AP, 4ug; Detection:13360-1-AP 1:1000) with HepG2 cells lysate 4000ug.



Immunofluorescent analysis of (4% PFA) fixed HepG2 cells using Glycerokinase antibody (13360-1-AP) at dilution of 1:400 and CoraLite@488-Conjugated AffiniPure Goat Anti-Rabbit IgG(H+L).



Immunofluorescent analysis of (4% PFA) fixed HepG2 cells using Glycerokinase antibody (13360-1-AP) at dilution of 1:200 and Multi-rAb CoraLite @ Plus 488-Goat Anti-Rabbit Recombinant Secondary Antibody (H+L) (RGAR002), CL594-phalloidin (red).