

For Research Use Only

PARP1 Polyclonal antibody

Catalog Number: 13371-1-AP **221 Publications**



Basic Information

Catalog Number:

13371-1-AP

Size:

150UL, Concentration: 253 µg/ml by Bradford method using BSA as the standard;

Source:

Rabbit

Isotype:

IgG

Immunogen Catalog Number:

AG4193

GenBank Accession Number:

BC037545

GeneID (NCBI):

142

Full Name:

poly (ADP-ribose) polymerase 1

Calculated MW:

1014 aa, 113 kDa

Observed MW:

113-116 kDa, 89 kDa

Purification Method:

Antigen affinity purification

Recommended Dilutions:

WB 1:500-1:2000

IP 0.5-4.0 µg for IP and 1:500-1:1000 for WB

IHC 1:50-1:500

IF 1:50-1:500

Applications

Tested Applications:

IF, IHC, IP, WB, ELISA

Cited Applications:

IF, IHC, IP, WB

Species Specificity:

human, mouse, rat

Cited Species:

human, M. grisea, monkey, mouse, pig, rat, sheep, swine

Note-IHC: suggested antigen retrieval with TE buffer pH 9.0; (*) Alternatively, antigen retrieval may be performed with citrate buffer pH 6.0

Positive Controls:

WB: Jurkat cells, Cobalt Chloride treated HeLa cells, C6 cells, Fas antibody treated HeLa cells

IP: K-562 cells,

IHC: human liver cancer tissue, human breast cancer tissue

IF: Neuro-2a cells,

Background Information

PARP1 (poly(ADP-ribose) polymerase 1) is a nuclear enzyme catalyzing the poly(ADP-ribosyl)ation of many key proteins in vivo. The normal function of PARP1 is the routine repair of DNA damage. Activated by DNA strand breaks, the PARP1 is cleaved into an 85 to 89-kDa COOH-terminal fragment and a 24-kDa NH2-terminal peptide by caspases during the apoptotic process. The appearance of PARP fragments is commonly considered as an important biomarker of apoptosis. In addition to caspases, other proteases like calpains, cathepsins, granzymes and matrix metalloproteinases (MMPs) have also been reported to cleave PARP1 and gave rise to fragments ranging from 42-89-kDa. This antibody was generated against the C-terminal region of human PARP1 and it recognizes the full-length as well as the cleavage of the PARP1.

Notable Publications

Author	Pubmed ID	Journal	Application
Faisal Aziz	26427350	Toxicol In Vitro	WB
Jingwen Xu	33002483	Steroids	WB
Lei Liu	30273566	Chem Biol Interact	WB

Storage

Storage:

Store at -20°C. Stable for one year after shipment.

Storage Buffer:

PBS with 0.02% sodium azide and 50% glycerol pH 7.3.

Aliquoting is unnecessary for -20°C storage

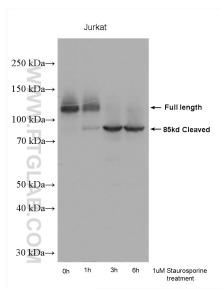
For technical support and original validation data for this product please contact:

T: 1 (888) 4PTGLAB (1-888-478-4522) (toll free in USA), or 1(312) 455-8498 (outside USA)

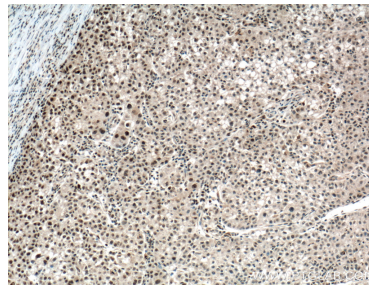
E: proteintech@ptglab.com
W: ptglab.com

This product is exclusively available under Proteintech Group brand and is not available to purchase from any other manufacturer.

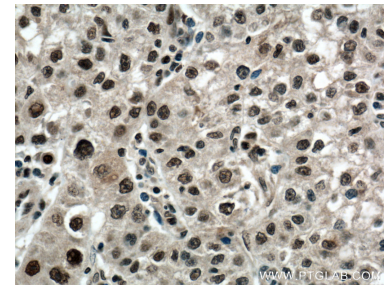
Selected Validation Data



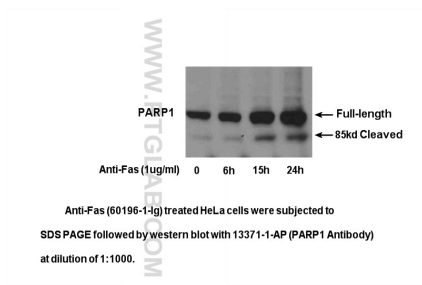
Jurkat cells (25 µg/lane) were subjected to SDS PAGE followed by western blot with 13371-1-AP (PARP1 antibody) at dilution of 1:1000 incubated at room temperature for 1.5 hours.



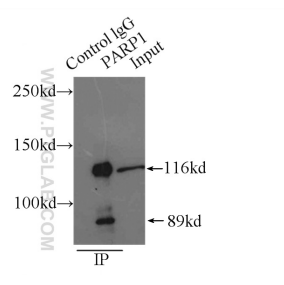
Immunohistochemical analysis of paraffin-embedded human liver cancer tissue slide using 13371-1-AP (PARP1 antibody) at dilution of 1:200 (under 10x Lens. Heat mediated antigen retrieval with Tris-EDTA buffer (pH 9.0)).



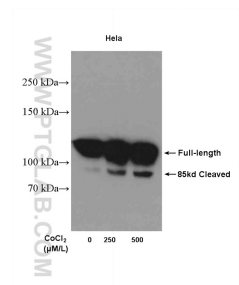
Immunohistochemical analysis of paraffin-embedded human liver cancer tissue slide using 13371-1-AP (PARP1 antibody) at dilution of 1:200 (under 40x Lens. Heat mediated antigen retrieval with Tris-EDTA buffer (pH 9.0)).



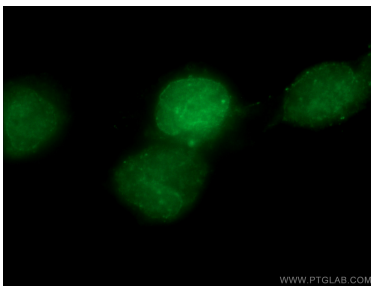
Anti-Fas (60196-1-4g) treated HeLa cells were subjected to SDS PAGE followed by western blot with 13371-1-AP (PARP1 Antibody) at dilution of 1:1000.



IP Result of anti-PARP1 (IP:13371-1-AP, 4µg; Detection:13371-1-AP 1:600) with K-562 cells lysate 5000µg.



Cobalt Chloride treated HeLa cells were subjected to SDS PAGE followed by western blot with 13371-1-AP (PARP1 Antibody) at dilution of 1:1000 incubated at room temperature for 1.5 hours.



Immunofluorescent analysis of (4% PFA) fixed Neuro-2a cells using 13371-1-AP (PARP1 antibody) at dilution of 1:50 and CoraLite488-Conjugated AffiniPure Goat Anti-Rabbit IgG(H+L).