

For Research Use Only

# IHH Polyclonal ANTIBODY



Catalog Number: 13388-1-AP **6 Publications**

## Basic Information

<b>Catalog Number:</b> 13388-1-AP	<b>GenBank Accession Number:</b> BC034757	<b>Purification Method:</b> Antigen affinity purification
<b>Size:</b> 150UL, Concentration: 240 µg/ml by Bradford method using BSA as the standard;	<b>GeneID (NCBI):</b> 3549	<b>Recommended Dilutions:</b> WB 1:500-1:2000 IHC 1:100-1:400
<b>Source:</b> Rabbit	<b>Full Name:</b> Indian hedgehog homolog (Drosophila)	
<b>Isotype:</b> IgG	<b>Calculated MW:</b> 411 aa, 45 kDa	
<b>Immunogen Catalog Number:</b> AG4046	<b>Observed MW:</b> 45 kDa	

## Applications

<b>Tested Applications:</b> IHC, WB, ELISA	<b>Positive Controls:</b> WB: human kidney tissue, human heart tissue IHC: human kidney tissue, human stomach cancer tissue
<b>Cited Applications:</b> IF, IHC, WB	
<b>Species Specificity:</b> human, mouse, rat	
<b>Cited Species:</b> human, mouse	
<b>Note-IHC: suggested antigen retrieval with TE buffer pH 9.0; (*) Alternatively, antigen retrieval may be performed with citrate buffer pH 6.0</b>	

## Background Information

### Notable Publications

Author	Pubmed ID	Journal	Application
Lianzheng Zhao	32479761	Dev Biol	IHC
Rongxuan Zhu	31253779	Nat Commun	WB
Takeshi Oichi	31201465	Cell Mol Life Sci	IF

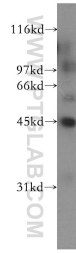
## Storage

**Storage:**  
Store at -20°C. Stable for one year after shipment.  
**Storage Buffer:**  
PBS with 0.02% sodium azide and 50% glycerol pH 7.3.  
Aliquoting is unnecessary for -20°C storage

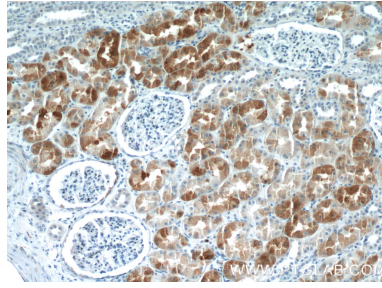
For technical support and original validation data for this product please contact:  
T: 1 (888) 4PTGLAB (1-888-478-4522) (toll free in USA), or 1(312) 455-8498 (outside USA)  
E: proteintech@ptglab.com  
W: ptglab.com

This product is exclusively available under Proteintech Group brand and is not available to purchase from any other manufacturer.

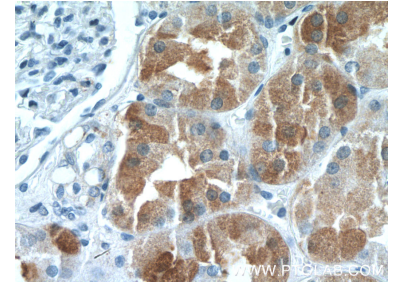
## Selected Validation Data



human kidney tissue were subjected to SDS PAGE followed by western blot with 13388-1-AP (IHH antibody) at dilution of 1:500 incubated at room temperature for 1.5 hours.



Immunohistochemical analysis of paraffin-embedded human kidney tissue slide using 13388-1-AP (IHH Antibody) at dilution of 1:200 (under 10x lens).



Immunohistochemical analysis of paraffin-embedded human kidney tissue slide using 13388-1-AP (IHH Antibody) at dilution of 1:200 (under 40x lens).