

For Research Use Only

TRPV6 Polyclonal antibody

Catalog Number: 13411-1-AP **7 Publications**



Basic Information

Catalog Number:

13411-1-AP

Size:

150ul, Concentration: 800 µg/ml by Nanodrop and 487 µg/ml by Bradford method using BSA as the standard;

Source:

Rabbit

Isotype:

IgG

Immunogen Catalog Number:

AG4060

GenBank Accession Number:

BC034814

GeneID (NCBI):

55503

Full Name:

transient receptor potential cation channel, subfamily V, member 6

Calculated MW:

725 aa, 83 kDa

Observed MW:

83 kDa, 70 kDa

Purification Method:

Antigen affinity purification

Recommended Dilutions:

WB 1:500-1:2000

IP 0.5-4.0 ug for IP and 1:200-1:1000 for WB

IF 1:10-1:100

Applications

Tested Applications:

IF, IP, WB, ELISA

Cited Applications:

IF, WB

Species Specificity:

human, mouse, rat

Cited Species:

human, mouse

Positive Controls:

WB : human placenta tissue, mouse kidney tissue, PC-3 cells

IP : mouse kidney tissue,

IF : HeLa cells,

Background Information

TRPV6, also named as CAT1 or ECaC2, is a member of the transient receptor potential (TRP) family of membrane proteins. Unlike most TRP channels, TRPV6 and its closest relative, TRPV5, are calcium-selective channels. TRPV6 is highly expressed in the proximal intestine, placenta and exocrine tissues (PMID: 12869611). It is probably involved in calcium absorption in various tissues, including calcium reabsorption in kidney. TRPV6 is overexpressed in some cancers and exhibits oncogenic potential.

Notable Publications

Author	Pubmed ID	Journal	Application
Chenyue Liu	30459613	Front Pharmacol	WB
Jian-Hao Liu	33142290	Pharmacology	WB
Zhichao Li	29758225	J Mol Cell Cardiol	WB

Storage

Storage:

Store at -20°C. Stable for one year after shipment.

Storage Buffer:

PBS with 0.02% sodium azide and 50% glycerol pH 7.3.

Aliquoting is unnecessary for -20°C storage

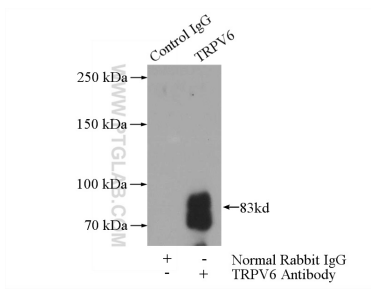
For technical support and original validation data for this product please contact:

T: 1 (888) 4PTGLAB (1-888-478-4522) (toll free in USA), or 1(312) 455-8498 (outside USA)

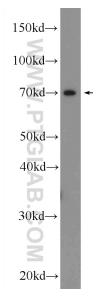
E: proteintech@ptglab.com
W: ptglab.com

This product is exclusively available under Proteintech Group brand and is not available to purchase from any other manufacturer.

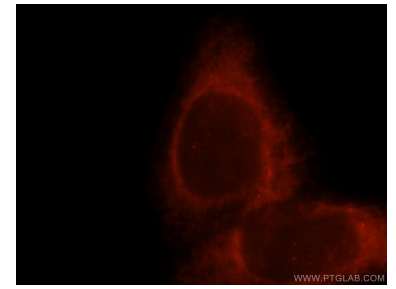
Selected Validation Data



IP Result of anti-TRPV6 (IP:13411-1-AP, 4ug; Detection:13411-1-AP 1:300) with mouse kidney tissue lysate 4000ug.



human placenta tissue were subjected to SDS PAGE followed by western blot with 13411-1-AP (TRPV6 Antibody) at dilution of 1:1000 incubated at room temperature for 1.5 hours.



Immunofluorescent analysis of HeLa cells, using TRPV6 antibody 13411-1-AP at 1:25 dilution and Rhodamine-labeled goat anti-rabbit IgG (red).