

For Research Use Only

HRH1 Polyclonal antibody

Catalog Number: 13413-1-AP

Featured Product

14 Publications



Basic Information

Catalog Number:

13413-1-AP

Size:

150ul, Concentration: 400 µg/ml by Nanodrop and 333 µg/ml by Bradford method using BSA as the standard;

Source:

Rabbit

Isotype:

IgG

Immunogen Catalog Number:

AG4067

GenBank Accession Number:

BC060802

GeneID (NCBI):

3269

UNIPROT ID:

P35367

Full Name:

histamine receptor H1

Calculated MW:

487 aa, 56 kDa

Observed MW:

56 kDa

Purification Method:

Antigen affinity purification

Recommended Dilutions:

WB: 1:500-1:1000

IHC: 1:20-1:200

Applications

Tested Applications:

WB, IHC, ELISA

Cited Applications:

WB, IHC, IF, IP

Species Specificity:

human, mouse, rat

Cited Species:

human, mouse, rat

Note-IHC: suggested antigen retrieval with TE buffer pH 9.0; (*) Alternatively, antigen retrieval may be performed with citrate buffer pH 6.0

Positive Controls:

WB : human colon tissue, Jurkat cells

IHC : human endometrial cancer tissue, human colon cancer tissue, human trachea tissue

Notable Publications

Author	Pubmed ID	Journal	Application
Liang Xie	32964244	Psychopharmacology (Berl)	IHC, WB
Wen-Jun Su	30483062	Front Cell Neurosci	WB
Yi-Fang Ding	35587368	Aging (Albany NY)	WB

Storage

Storage:

Store at -20°C. Stable for one year after shipment.

Storage Buffer:

PBS with 0.02% sodium azide and 50% glycerol, pH7.3

Aliquoting is unnecessary for -20°C storage

*** 20ul sizes contain 0.1% BSA

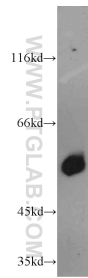
For technical support and original validation data for this product please contact:

T: 1 (888) 4PTGLAB (1-888-478-4522) (toll free in USA), or 1(312) 455-8498 (outside USA)

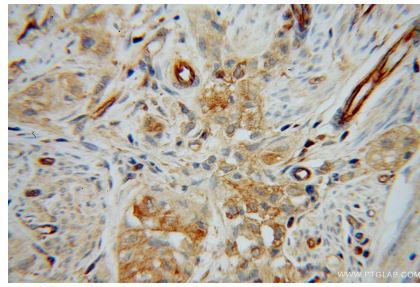
E: proteintech@ptglab.com
W: ptglab.com

This product is exclusively available under Proteintech Group brand and is not available to purchase from any other manufacturer.

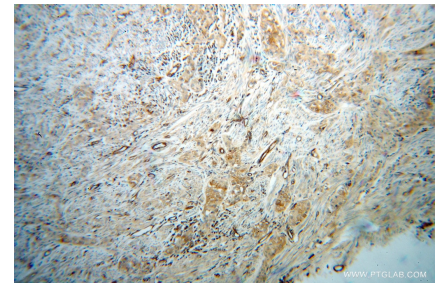
Selected Validation Data



human colon tissue were subjected to SDS PAGE followed by western blot with 13413-1-AP (HRH1 antibody) at dilution of 1:500 incubated at room temperature for 1.5 hours.



Immunohistochemical analysis of paraffin-embedded human endometrial cancer using 13413-1-AP (HRH1 antibody) at dilution of 1:100 (under 40x lens).



Immunohistochemical analysis of paraffin-embedded human endometrial cancer using 13413-1-AP (HRH1 antibody) at dilution of 1:100 (under 10x lens).