

For Research Use Only

# PPP2CA Polyclonal antibody

Catalog Number: 13482-1-AP

Featured Product

37 Publications



## Basic Information

### Catalog Number:

13482-1-AP

### Size:

150ul, Concentration: 450 ug/ml by Nanodrop;

### Source:

Rabbit

### Isotype:

IgG

### Immunogen Catalog Number:

AG4294

### GenBank Accession Number:

BC031696

### GeneID (NCBI):

5515

### UNIPROT ID:

P67775

### Full Name:

protein phosphatase 2 (formerly 2A), catalytic subunit, alpha isoform

### Calculated MW:

309 aa, 36 kDa

### Observed MW:

36 kDa

### Purification Method:

Antigen affinity purification

### Recommended Dilutions:

WB: 1:1000-1:4000

IP: 0.5-4.0 ug for 1.0-3.0 mg of total protein lysate

IHC: 1:50-1:500

IF/ICC: 1:50-1:500

FC (Intra): 0.20 ug per 10<sup>6</sup> cells in a 100 µl suspension

## Applications

### Tested Applications:

WB, IHC, IF/ICC, FC (Intra), IP, ELISA

### Cited Applications:

WB, IHC, IF, IP, CoIP

### Species Specificity:

human, mouse, rat

### Cited Species:

human, mouse, rat

**Note-IHC: suggested antigen retrieval with TE buffer pH 9.0; (\*) Alternatively, antigen retrieval may be performed with citrate buffer pH 6.0**

### Positive Controls:

WB: HEK-293T cells, human liver tissue, Jurkat cells, MCF-7 cells

IP: Jurkat cells,

IHC: mouse liver tissue, rat liver tissue

IF/ICC: MCF-7 cells,

FC (Intra): MCF-7 cells,

## Background Information

PPP2CA, also named as RP-C and PP2A-alpha, belongs to the PPP phosphatase family and PP-1 subfamily. PP2A can modulate the activity of phosphorylase B kinase casein kinase 2, mitogen-stimulated S6 kinase, and MAP-2 kinase. PP2A activity was modestly decreased in AML patients harboring C-KIT/WT. PP2A is a target for C-KIT/TKD and implicated the potential efficacy of therapies targeting PP2A in such AML in future.

## Notable Publications

Author	Pubmed ID	Journal	Application
Jian Guo	32989094	J Immunol	WB
Xiang Xu	34561619	Cell Res	WB, IP
Hai Zheng	33243860	Science	WB

## Storage

### Storage:

Store at -20°C. Stable for one year after shipment.

### Storage Buffer:

PBS with 0.02% sodium azide and 50% glycerol, pH7.3

Aliquoting is unnecessary for -20°C storage

\*\*\* 20ul sizes contain 0.1% BSA

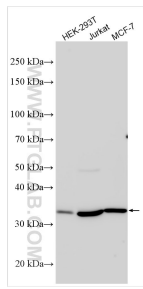
For technical support and original validation data for this product please contact:

T: 1 (888) 4PTGLAB (1-888-478-4522) (toll free in USA), or 1(312) 455-8498 (outside USA)

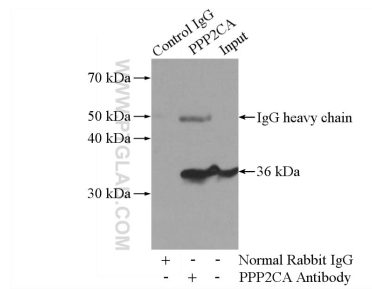
E: [proteintech@ptglab.com](mailto:proteintech@ptglab.com)  
W: [ptglab.com](http://ptglab.com)

This product is exclusively available under Proteintech Group brand and is not available to purchase from any other manufacturer.

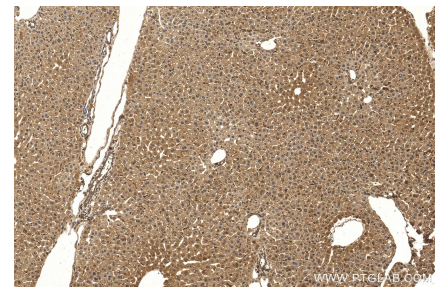
## Selected Validation Data



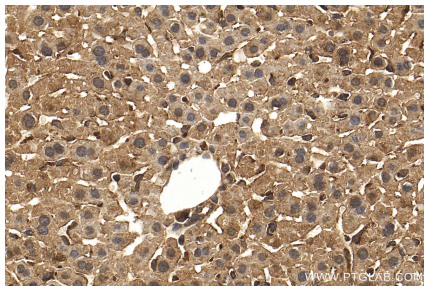
Various lysates were subjected to SDS PAGE followed by western blot with 13482-1-AP (PPP2CA antibody) at dilution of 1:2000 incubated at room temperature for 1.5 hours.



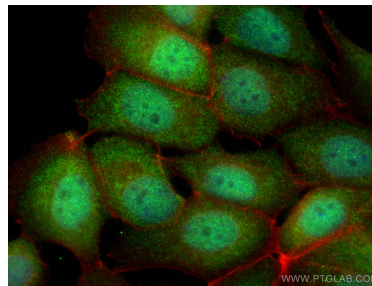
IP result of anti-PPP2CA (IP:13482-1-AP, 4ug; Detection:13482-1-AP 1:500) with Jurkat cells lysate 2400ug.



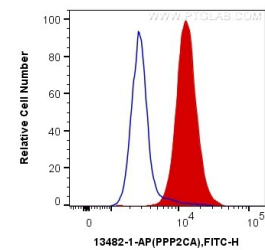
Immunohistochemical analysis of paraffin-embedded mouse liver tissue slide using 13482-1-AP (PPP2CA antibody) at dilution of 1:200 (under 10x lens). Heat mediated antigen retrieval with Tris-EDTA buffer (pH 9.0).



Immunohistochemical analysis of paraffin-embedded mouse liver tissue slide using 13482-1-AP (PPP2CA antibody) at dilution of 1:200 (under 40x lens). Heat mediated antigen retrieval with Tris-EDTA buffer (pH 9.0).



Immunofluorescent analysis of (4% PFA) fixed MCF-7 cells using PPP2CA antibody (13482-1-AP) at dilution of 1:200 and CoraLite®488-Conjugated AffiniPure Goat Anti-Rabbit IgG(H+L), CL594-phalloidin (red).



1X10<sup>6</sup> MCF-7 cells were intracellularly stained with 0.2 ug Anti-Human PPP2CA (13482-1-AP) and CoraLite®488-Conjugated AffiniPure Goat Anti-Rabbit IgG(H+L) at dilution 1:1000 (red), or 0.2 ug Control Antibody. Cells were fixed and permeabilized with Transcription Factor Staining Buffer Kit (PF00011).