

For Research Use Only

SNRPB2 Polyclonal ANTIBODY



Catalog Number: 13512-1-AP

5 Publications

Basic Information

Catalog Number:
13512-1-AP

Size:
37 µg/150 µl

Source:
Rabbit

Isotype:
IgG

Purification Method:
Antigen affinity purification

Immunogen Catalog Number:
AG4436

GenBank Accession Number:
BC036737

GeneID (NCBI):
6629

Full Name:
small nuclear ribonucleoprotein poly peptide B*

Calculated MW:
225aa, 26.5 kDa

Observed MW:
26.5 kDa

Recommended Dilutions:

WB 1:1000-1:4000

IP 0.5-4.0 µg for IP and 1:500-1:2000 for WB

IHC 1:20-1:200

IF 1:50-1:500

Applications

Tested Applications:
IF, IHC, IP, WB, ELISA

Cited Applications:
IF, IHC, WB

Species Specificity:
human, mouse, rat

Cited Species:
human

Note: suggested antigen retrieval with TE buffer pH 9.0; (*) Alternatively, antigen retrieval may be performed with citrate buffer pH 6.0

Positive Controls:

WB : HeLa cells; human brain tissue, human kidney tissue, human liver tissue, mouse liver tissue, mouse lung tissue

IP : mouse liver tissue;

IHC : human cervical cancer tissue;

IF : HeLa cells;

Background Information

U2 small nuclear ribonucleoprotein B'(SNRPB2) is part of the U2 RNP particle, which associated with the branch point of the lariat-shaped intron, in intermediate in the cascade of mRNA precursor splicing event. Only in presence of the U2A' protein, SNRPB2 binds stem loop IV of U2 snRNA.

Notable Publications

Author	Pubmed ID	Journal	Application
Li Chen	27683217	Nucleic Acids Res	WB
Felice-Alessio Bava	23434754	Nature	WB
Bilada Bilican	23740897	Sci Transl Med	WB, IHC

Storage

Storage:

Store at -20°C. Stable for one year after shipment.

Storage Buffer:

PBS with 0.02% sodium azide and 50% glycerol pH 7.3.

Aliquoting is unnecessary for -20°C storage

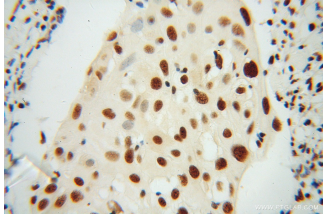
For technical support and original validation data for this product please contact:

T: 1 (888) 4PTGLAB (1-888-478-4522) (toll free in USA), or 1(312) 455-8498 (outside USA)

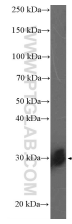
E: proteintech@ptglab.com
W: ptglab.com

This product is exclusively available under Proteintech Group brand and is not available to purchase from any other manufacturer.

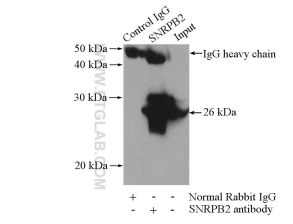
Selected Validation Data



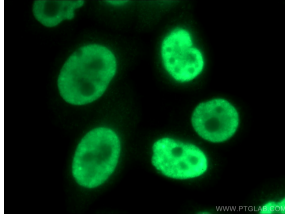
Immunohistochemical of paraffin-embedded human cervical cancer using 13512-1-AP(SNRPB2 antibody) at dilution of 1:100 (under 40x lens)



HeLa cells were subjected to SDS PAGE followed by western blot with 13512-1-AP(SNRPB2 Antibody) at dilution of 1:2000 incubated at room temperature for 1.5 hours



IP Result of anti-SNRPB2 (IP: 13512-1-AP, 4ug; Detection: 13512-1-AP 1:1000) with mouse liver tissue lysate 4000ug.



Immunofluorescent analysis of (4% PFA) fixed HeLa cells using 13512-1-AP(SNRPB2 antibody) at dilution of 1:50 and Alexa Fluor 488-conjugated AffiniPure Goat Anti-Rabbit IgG(H+L)