

For Research Use Only

PAK6 Polyclonal antibody

Catalog Number: 13539-1-AP

Featured Product

5 Publications



Basic Information

Catalog Number:

13539-1-AP

Size:

150ul, Concentration: 450 ug/ml by Nanodrop and 333 ug/ml by Bradford method using BSA as the standard;

Source:

Rabbit

Isotype:

IgG

Immunogen Catalog Number:

AG4467

GenBank Accession Number:

BC035596

GeneID (NCBI):

56924

UNIPROT ID:

Q9NQU5

Full Name:

p21 protein (Cdc42/Rac)-activated kinase 6

Calculated MW:

681 aa, 75 kDa

Observed MW:

70-75 kDa

Purification Method:

Antigen affinity purification

Recommended Dilutions:

WB: 1:500-1:2000

IP: 0.5-4.0 ug for 1.0-3.0 mg of total protein lysate

IHC: 1:50-1:500

IF/ICC: 1:50-1:500

Applications

Tested Applications:

WB, IHC, IF/ICC, IP, ELISA

Cited Applications:

WB, IHC

Species Specificity:

human, mouse, rat

Cited Species:

human, rat

Note-IHC: suggested antigen retrieval with TE buffer pH 9.0; (*) Alternatively, antigen retrieval may be performed with citrate buffer pH 6.0

Positive Controls:

WB: mouse testis tissue, Raji cells, rat testis tissue

IP: mouse testis tissue,

IHC: human prostate cancer tissue,

IF/ICC: A431 cells,

Background Information

PAK6(p21-activated kinase 6) is a serine/threonine kinase belonging to the p21-activated kinase (PAK) family. This protein plays a role in the regulation of gene transcription and may protect cells from apoptosis through phosphorylation of BAD. Northern blot analysis revealed that PAK6 is highly expressed in testis and prostate tissues (PMID:11278661). The immunogen of this antibody is the C-terminal of PAK6. This antibody has weak cross-reaction with other PAK members.

Notable Publications

Author	Pubmed ID	Journal	Application
Yuan Yuan Wu	32009812	J Pain Res	WB
Chunhui Liu	26459798	Mol Med Rep	WB, IHC
Qin Yang	32782556	Oncol Lett	WB, IHC

Storage

Storage:

Store at -20°C. Stable for one year after shipment.

Storage Buffer:

PBS with 0.02% sodium azide and 50% glycerol, pH7.3

Aliquoting is unnecessary for -20°C storage

*** 20ul sizes contain 0.1% BSA

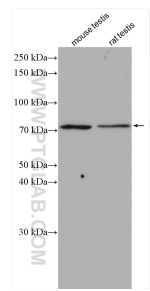
For technical support and original validation data for this product please contact:

T: 1 (888) 4PTGLAB (1-888-478-4522) (toll free in USA), or 1(312) 455-8498 (outside USA)

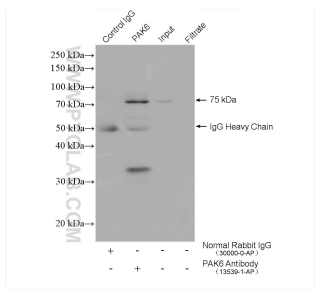
E: proteintech@ptglab.com
W: ptglab.com

This product is exclusively available under Proteintech Group brand and is not available to purchase from any other manufacturer.

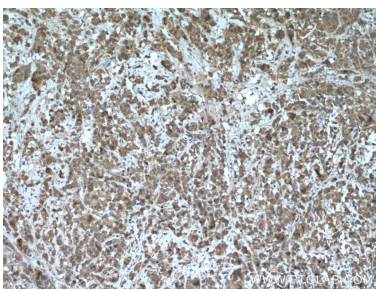
Selected Validation Data



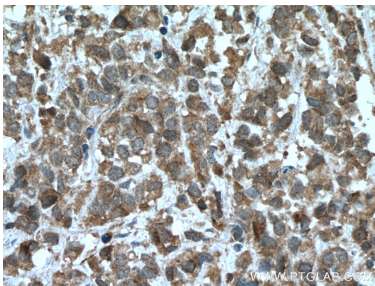
Various lysates were subjected to SDS PAGE followed by western blot with 13539-1-AP (PAK6 antibody) at dilution of 1:1000 incubated at room temperature for 1.5 hours.



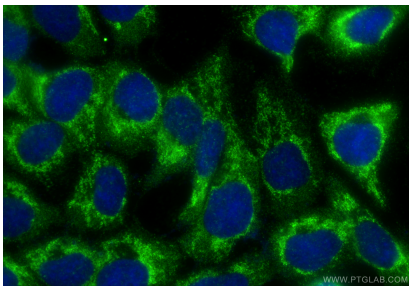
IP result of anti-PAK6 (IP:13539-1-AP, 4ug; Detection:13539-1-AP 1:300) with mouse testis tissue lysate 4000 ug.



Immunohistochemical analysis of paraffin-embedded human prostate cancer tissue slide using 13539-1-AP (PAK6 antibody) at dilution of 1:200 (under 10x lens. Heat mediated antigen retrieval with Tris-EDTA buffer (pH 9.0).



Immunohistochemical analysis of paraffin-embedded human prostate cancer tissue slide using 13539-1-AP (PAK6 antibody) at dilution of 1:200 (under 40x lens. Heat mediated antigen retrieval with Tris-EDTA buffer (pH 9.0).



Immunofluorescent analysis of (-20°C Methanol) fixed A431 cells using PAK6 antibody (13539-1-AP) at dilution of 1:200 and CoraLite®488-Conjugated Goat Anti-Rabbit IgG(H+L) (SA00013-2).