

For Research Use Only

BST2 Polyclonal ANTIBODY



Catalog Number: 13560-1-AP

Featured Product

11 Publications

Basic Information

Catalog Number:

13560-1-AP

Size:

150UL, Concentration: 500 µg/ml by Bradford method using BSA as the standard;

Source:

Rabbit

Isotype:

IgG

Immunogen Catalog Number:

AG4430

GenBank Accession Number:

BC033873

GeneID (NCBI):

684

Full Name:

bone marrow stromal cell antigen 2

Calculated MW:

180 aa, 20 kDa

Observed MW:

30-36 kDa

Purification Method:

Antigen affinity purification

Recommended Dilutions:

WB 1:500-1:2000

IHC 1:20-1:200

IF 1:20-1:200

Applications

Tested Applications:

FC, IF, IHC, WB, ELISA

Cited Applications:

FC, IF, IHC, WB

Species Specificity:

human

Cited Species:

human

Note-IHC: suggested antigen retrieval with TE buffer pH 9.0; (*) Alternatively, antigen retrieval may be performed with citrate buffer pH 6.0

Positive Controls:

WB: human heart tissue, human liver tissue, L02 cells

IHC: human liver tissue,

IF: HepG2 cells,

Background Information

BST2, also named as CD317 and Tetherin, belongs to the tetherin family. It may be involved in the sorting of secreted proteins and it is involved in pre-B-cell growth. BST2 is an antiretroviral defense protein, that blocks release of retrovirus from the cell surface. Depleted upon HIV-1 infection by viral VPU protein through 20S proteasome degradation. Depleted upon infection by human Kaposi's sarcoma-associated herpesvirus (KSHV) through ubiquitination and subsequent degradation. BST2 may play a role in B-cell activation in rheumatoid arthritis. It is recently identified interferon-induced cellular proteins that restrict infections by retroviruses and filoviruses and of influenza virus and flaviviruses, respectively. BST2 is a plasma membrane proteins, tetherin inhibits virion particle release from infected cells. BST2 is effective against retroviruses and flavoviruses whilst IFITMs disrupt influenza and flavivirus infection. Observed MW of BST2 is 30-36 kDa (PMID: 19196977; 21237475).

Notable Publications

Author	Pubmed ID	Journal	Application
Shouheng Jin	28965816	Mol Cell	WB
Yuxuan Fu	28910400	PLoS Pathog	WB
Weiyu Liu	29774441	Biotechnol Lett	WB,IHC

Storage

Storage:

Store at -20°C. Stable for one year after shipment.

Storage Buffer:

PBS with 0.02% sodium azide and 50% glycerol pH 7.3.

Aliquoting is unnecessary for -20°C storage

For technical support and original validation data for this product please contact:

T: 1 (888) 4PTGLAB (1-888-478-4522) (toll free in USA), or 1(312) 455-8498 (outside USA)

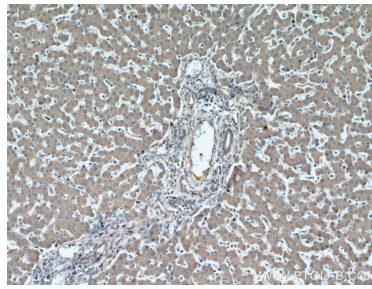
E: proteintech@ptglab.com
W: ptglab.com

This product is exclusively available under Proteintech Group brand and is not available to purchase from any other manufacturer.

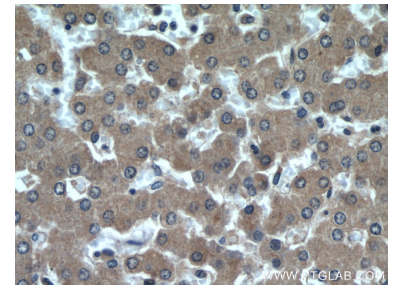
Selected Validation Data



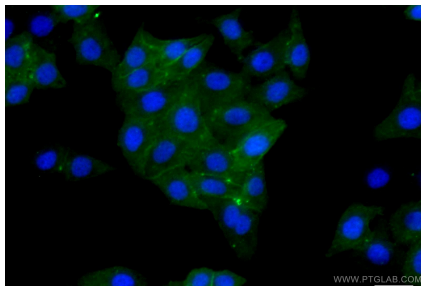
human heart tissue were subjected to SDS PAGE followed by western blot with 13560-1-AP (BST2 antibody) at dilution of 1:1000 incubated at room temperature for 1.5 hours.



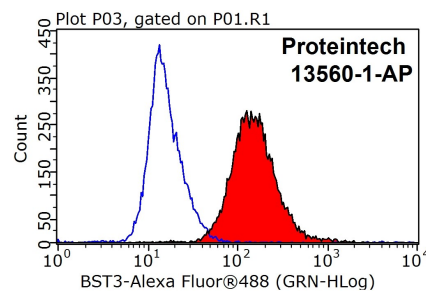
Immunohistochemical analysis of paraffin-embedded human liver using 13560-1-AP (BST2 antibody) at dilution of 1:50 (under 10x lens).



Immunohistochemical analysis of paraffin-embedded human liver using 13560-1-AP (BST2 antibody) at dilution of 1:50 (under 40x lens).



Immunofluorescent analysis of HepG2 cells using 13560-1-AP (BST2 antibody) at dilution of 1:50 and Alexa Fluor 488-conjugated AffiniPure Goat Anti-Rabbit IgG(H+L).



1×10^6 HepG2 cells were stained with 0.2ug BST2 antibody (13560-1-AP, red) and control antibody (blue). Fixed with 90% MeOH blocked with 3% BSA (30 min). Alexa Fluor 488-conjugated AffiniPure Goat Anti-Rabbit IgG(H+L) with dilution 1:1000.