

For Research Use Only

RILP Polyclonal antibody

Catalog Number: 13574-1-AP

Featured Product

11 Publications



Basic Information

Catalog Number:

13574-1-AP

Size:

150ul, Concentration: 400 ug/ml by Nanodrop;

Source:

Rabbit

Isotype:

IgG

Immunogen Catalog Number:

AG4472

GenBank Accession Number:

BC031621

GeneID (NCBI):

83547

UNIPROT ID:

Q96NA2

Full Name:

Rab interacting lysosomal protein

Calculated MW:

401 aa, 41 kDa

Observed MW:

41-45 kDa

Purification Method:

Antigen affinity purification

Recommended Dilutions:

WB: 1:200-1:1000

IHC: 1:50-1:500

IF/ICC: 1:200-1:800

Applications

Tested Applications:

WB, IHC, IF/ICC, ELISA

Cited Applications:

WB, IHC, IF, PLA

Species Specificity:

human, mouse

Cited Species:

human, mouse

Note-IHC: suggested antigen retrieval with TE buffer pH 9.0; (*) Alternatively, antigen retrieval may be performed with citrate buffer pH 6.0

Positive Controls:

WB: HEK-293 cells, HepG2 cells

IHC: human kidney tissue, mouse brain tissue

IF/ICC: HepG2 cells,

Notable Publications

Author	Pubmed ID	Journal	Application
Minghui Chang	30326943	J Exp Clin Cancer Res	WB
Xuefeng Fei	34623756	J Extracell Vesicles	PLA
Mai E Oguchi	32669361	J Biol Chem	WB

Storage

Storage:

Store at -20°C. Stable for one year after shipment.

Storage Buffer:

PBS with 0.02% sodium azide and 50% glycerol, pH7.3

Aliquoting is unnecessary for -20°C storage

*** 20ul sizes contain 0.1% BSA

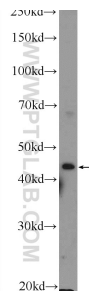
For technical support and original validation data for this product please contact:

T: 1 (888) 4PTGLAB (1-888-478-4522) (toll free in USA), or 1(312) 455-8498 (outside USA)

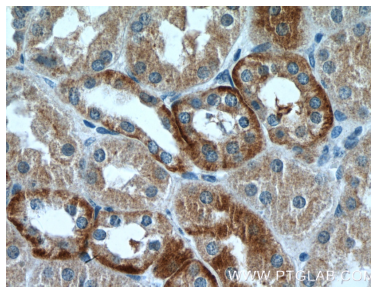
E: proteintech@ptglab.com
W: ptglab.com

This product is exclusively available under Proteintech Group brand and is not available to purchase from any other manufacturer.

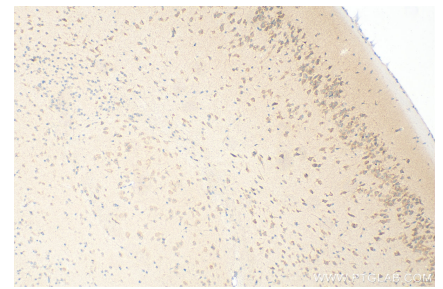
Selected Validation Data



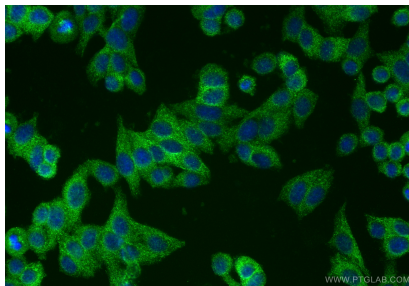
HEK-293 cells were subjected to SDS PAGE followed by western blot with 13574-1-AP (RILP Antibody) at dilution of 1:300 incubated at room temperature for 1.5 hours.



Immunohistochemical analysis of paraffin-embedded human kidney tissue slide using 13574-1-AP (RILP Antibody) at dilution of 1:200 (under 40x lens).



Immunohistochemical analysis of paraffin-embedded mouse brain tissue slide using 13574-1-AP (RILP antibody) at dilution of 1:200 (under 10x lens). Heat mediated antigen retrieval with Tris-EDTA buffer (pH 9.0).



Immunofluorescent analysis of (-20°C Ethanol) fixed HepG2 cells using RILP antibody (13574-1-AP) at dilution of 1:400 and Multi-rAb CoraLite® Plus 488-Goat Anti-Rabbit Recombinant Secondary Antibody (H+L) (RGAR002).