

For Research Use Only

ABCG1 Polyclonal antibody

Catalog Number: 13578-1-AP

Featured Product

25 Publications



Basic Information

Catalog Number:

13578-1-AP

Size:

150ul, Concentration: 600 µg/ml by Nanodrop and 240 µg/ml by Bradford method using BSA as the standard;

Source:

Rabbit

Isotype:

IgG

Immunogen Catalog Number:

AG4479

GenBank Accession Number:

BC029158

GeneID (NCBI):

9619

Full Name:

ATP-binding cassette, sub-family G (WHITE), member 1

Calculated MW:

678 aa, 76 kDa

Observed MW:

90-100 kDa

Purification Method:

Antigen affinity purification

Recommended Dilutions:

WB 1:500-1:1000
IP 0.5-4.0 ug for IP and 1:500-1:2000 for WB
IHC 1:20-1:200

Applications

Tested Applications:

IHC, IP, WB, ELISA

Cited Applications:

IF, IHC, WB

Species Specificity:

human, mouse, rat

Cited Species:

human, mouse

Note-IHC: suggested antigen retrieval with TE buffer pH 9.0; (*) Alternatively, antigen retrieval may be performed with citrate buffer pH 6.0

Positive Controls:

WB: HeLa cells, RAW 264.7 cells, HepG2 cells

IP: mouse brain tissue,

IHC: human cervical cancer tissue, human tonsillitis tissue

Background Information

ABCG1 is a cholesterol and phospholipid transporter expressed in lung, brain, spleen, and macrophages. In liver, ABCG1 is expressed mainly in Kupffer cells. The monomer of ABCG1 is around 60-65 kDa, while multiple forms of ABCG1 can be observed on SDS-PAGE, including 130 kDa (dimer), 90-95 kDa, 110 kDa. It was not clear whether the glycosylation or splicing accounts for the differences in mass. (PMID: 16702602)

Notable Publications

Author	Pubmed ID	Journal	Application
Xuan He	30218721	Life Sci	WB
Ling Zhang	27365310	Biochim Biophys Acta	WB, IF
Ying Luo	31667852	J Sci Food Agric	WB

Storage

Storage:

Store at -20°C. Stable for one year after shipment.

Storage Buffer:

PBS with 0.02% sodium azide and 50% glycerol pH 7.3.

Aliquoting is unnecessary for -20°C storage

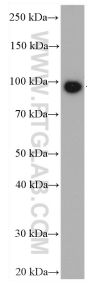
For technical support and original validation data for this product please contact:

T: 1 (888) 4PTGLAB (1-888-478-4522) (toll free in USA), or 1(312) 455-8498 (outside USA)

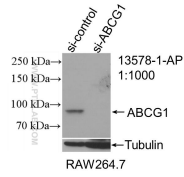
E: proteintech@ptglab.com
W: ptglab.com

This product is exclusively available under Proteintech Group brand and is not available to purchase from any other manufacturer.

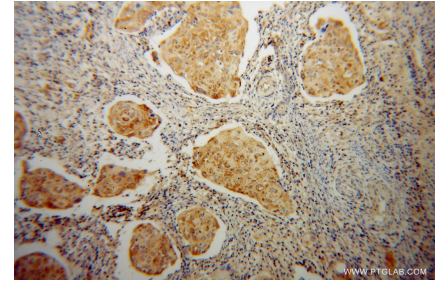
Selected Validation Data



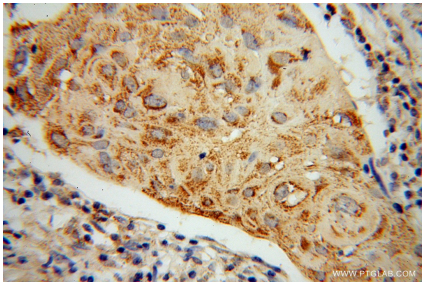
HeLa cells were subjected to SDS PAGE followed by western blot with 13578-1-AP (ABCG1 antibody) at dilution of 1:500 incubated at room temperature for 1.5 hours.



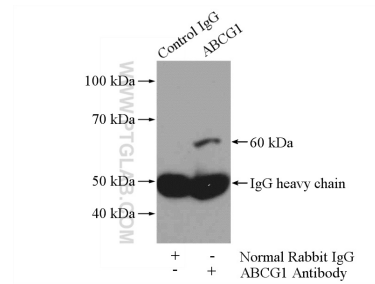
WB result of ABCG1 antibody (13578-1-AP; 1:1000; incubated at room temperature for 1.5 hours) with sh-Control and sh-ABCG1 transfected RAW 264.7 cells.



Immunohistochemical analysis of paraffin-embedded human cervical cancer using 13578-1-AP (ABCG1 antibody) at dilution of 1:100 (under 10x lens).



Immunohistochemical analysis of paraffin-embedded human cervical cancer using 13578-1-AP (ABCG1 antibody) at dilution of 1:100 (under 40x lens).



IP Result of anti-ABCG1 (IP:13578-1-AP, 4ug; Detection:13578-1-AP 1:1000) with mouse brain tissue lysate 4000ug.