

For Research Use Only

MLXIP Polyclonal antibody

Catalog Number: 13614-1-AP

Featured Product

20 Publications



Basic Information

Catalog Number:

13614-1-AP

Size:

150ul, Concentration: 450 ug/ml by Nanodrop and 347 ug/ml by Bradford method using BSA as the standard;

Source:

Rabbit

Isotype:

IgG

Immunogen Catalog Number:

AG4519

GenBank Accession Number:

BC039704

GeneID (NCBI):

22877

UNIPROT ID:

Q9HAP2

Full Name:

MLX interacting protein

Calculated MW:

919 aa, 100 kDa

Observed MW:

130 kDa

Purification Method:

Antigen affinity purification

Recommended Dilutions:

WB 1:200-1:1000

IP 0.5-4.0 ug for 1.0-3.0 mg of total protein lysate

IHC 1:20-1:200

IF/ICC 1:10-1:100

Applications

Tested Applications:

WB, IHC, IF/ICC, IP, ELISA

Cited Applications:

WB, IHC, IF, IP, ChIP

Species Specificity:

human, mouse, rat

Cited Species:

human, mouse, rat

Positive Controls:

WB : K-562 cells,

IP : K-562 cells,

IHC : human skeletal muscle tissue, mouse skeletal muscle tissue

IF/ICC : HepG2 cells,

Note-IHC: suggested antigen retrieval with TE buffer pH 9.0; (*) Alternatively, antigen retrieval may be performed with citrate buffer pH 6.0

Background Information

Mlx-interacting protein (MLXIP), after forming heterodimers with MLX, can bind to and then activate transcription from CACGTG E boxes. The N terminus of MLXIP acts as a CRM1-dependent nuclear export signal and contribute to the cytoplasmic localization of the complex, and as a binding site for 13 protein. the C terminus contains a cytoplasmic localization signal and mediates protein-protein interaction of MONDOA and MLX. The complex play a role in transcriptional activation of glycolytic target genes and glucose-responsive gene regulation. This antibody could recognize isoform1 (~110kd) and isoform3 (~69kd) of MLXIP. A prominent and specific MLXIP of approximately 130 kDa was detected. It demonstrates that MLXIP associated specifically with Mlx in the cytoplasm (PMID: 11073985).

Notable Publications

Author	Pubmed ID	Journal	Application
Zhizhou Ye	30037981	Mol Cell Biol	WB
Hei-Man Chow	31636448	Nat Neurosci	chIP
Patrick A Carroll	34669700	PLoS Biol	WB, IHC

Storage

Storage:

Store at -20°C. Stable for one year after shipment.

Storage Buffer:

PBS with 0.02% sodium azide and 50% glycerol pH 7.3.

Aliquoting is unnecessary for -20°C storage

*** 20ul sizes contain 0.1% BSA

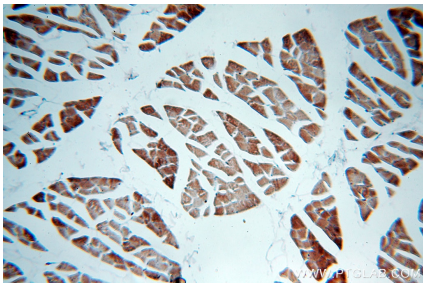
For technical support and original validation data for this product please contact:

T: 1 (888) 4PTGLAB (1-888-478-4522) (toll free in USA), or 1(312) 455-8498 (outside USA)

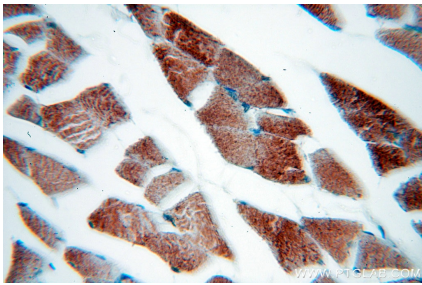
E: proteintech@ptglab.com
W: ptglab.com

This product is exclusively available under Proteintech Group brand and is not available to purchase from any other manufacturer.

Selected Validation Data



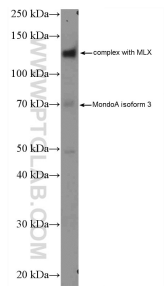
Immunohistochemical analysis of paraffin-embedded human skeletal muscle using 13614-1-AP (MLXIP antibody) at dilution of 1:100 (under 10x lens).



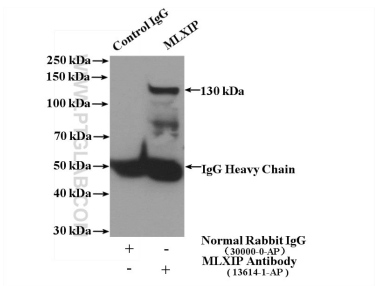
Immunohistochemical analysis of paraffin-embedded human skeletal muscle using 13614-1-AP (MLXIP antibody) at dilution of 1:100 (under 40x lens).



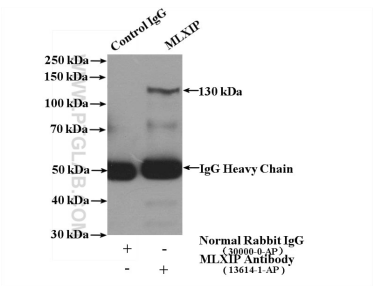
Immunofluorescent analysis of HepG2 cells, using MLXIP antibody 13614-1-AP at 1:25 dilution and Rhodamine-labeled goat anti-rabbit IgG (red). Blue pseudocolor = DAPI (fluorescent DNA dye).



K-562 cells were subjected to SDS PAGE followed by western blot with 13614-1-AP (MLXIP Antibody) at dilution of 1:300 incubated at room temperature for 1.5 hours.



IP result of anti-MLXIP (IP:13614-1-AP, 4ug; Detection:13614-1-AP 1:300) with K-562 cells lysate 3200ug.



IP result of anti-MLXIP (IP:13614-1-AP, 4ug; Detection:13614-1-AP 1:300) with K-562 cells lysate 3200ug.