

For Research Use Only

# IFT20 Polyclonal ANTIBODY



Catalog Number: 13615-1-AP

Featured Product

30 Publications

## Basic Information

**Catalog Number:**

13615-1-AP

**Size:**

mg/ml

**Source:**

Rabbit

**Isotype:**

IgG

**Purification Method:**

Antigen affinity purification

**Immunogen Catalog Number:**

AG4521

**GenBank Accession Number:**

BC038094

**GeneID (NCBI):**

90410

**Full Name:**

intraflagellar transport 20 homolog  
(Chlamydomonas)

**Calculated MW:**

15 kDa

**Observed MW:**

15-18 kDa

**Recommended Dilutions:**

WB 1:500-1:1000

IP 0.5-4.0 ug for IP and 1:500-1:1000 for  
WB

IHC 1:20-1:200

IF 1:20-1:200

## Applications

**Tested Applications:**

IF, IHC, IP, WB, ELISA

**Cited Applications:**

IF, WB

**Species Specificity:**

human, mouse, dog

**Cited Species:**

dog, human, mouse, rat, zebrafish

**Positive Controls:**

**WB :** HEK-293 cells; mouse pancreas tissue, mouse  
kidney tissue, mouse lung tissue, mouse testis tissue,  
MDCK cells

**IP :** mouse testis tissue;

**IHC :** human endometrial cancer tissue;

**IF :** hTERT-RPE1 cells; MDCK cells

## Background Information

Intraflagellar transport (IFT), mediated by molecular motors and IFT particles, is an important transport process that occurs in the cilium. IFT particles are multi-subunit complexes that are made up of complex A and complex B. IFT20 is a component of IFT complex B and involved in ciliary process assembly. It is associated with the Golgi complex and plays a role in the trafficking of ciliary membrane proteins from the Golgi complex to the cilium.

## Notable Publications

Author	Pubmed ID	Journal	Application
Si-Hyung Lee	29042452	FASEB J	IF
Laura Vuolo	30320547	Elife	IF
Ludovic Martin	29040558	Hum Mol Genet	IF

## Storage

**Storage:**

Store at -20°C. Stable for one year after shipment.

**Storage Buffer:**

PBS, pH 7.3.

Aliquoting is unnecessary for -20°C storage

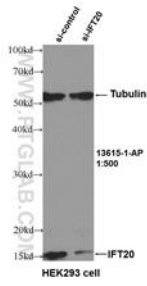
For technical support and original validation data for this product please contact:

T: 1 (888) 4PTGLAB (1-888-478-4522) (toll free in USA), or 1(312) 455-8498 (outside USA)

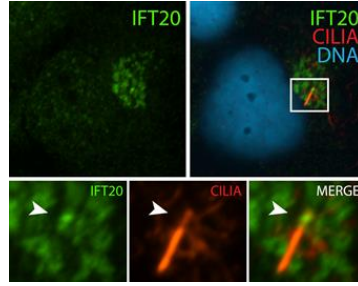
E: proteintech@ptglab.com  
W: ptglab.com

This product is exclusively available under Proteintech Group brand and is not available to purchase from any other manufacturer.

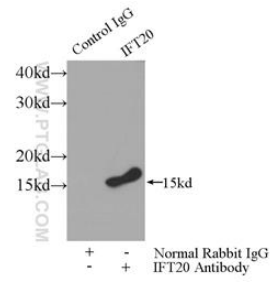
## Selected Validation Data



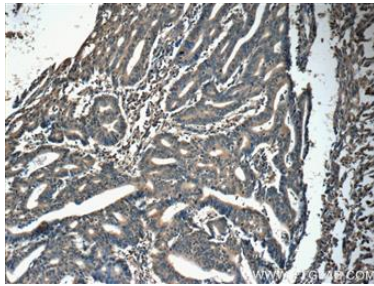
WB result of IFT20 antibody (13615-1-AP, 1:500) with si-Control and si-IFT20 transfected HEK293 cells.



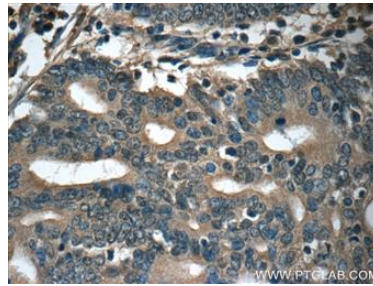
IF result (localization to Golgi-like structures) of anti-IFT20 (13615-1-AP, 1:500) with serum-starved hTERT-RPE1 (MoTH fixed) by Dr. Moshe Kim.



IP Result of anti-IFT20 (IP:13615-1-AP, 3ug; Detection:13615-1-AP 1:700) with mouse testis tissue lysate 4000ug.



Immunohistochemistry of paraffin-embedded human endometrial cancer tissue slide using 13615-1-AP( IFT20 Antibody) at dilution of 1:50 (under 10x lens)



Immunohistochemistry of paraffin-embedded human endometrial cancer tissue slide using 13615-1-AP( IFT20 Antibody) at dilution of 1:50 (under 40x lens)