

For Research Use Only

# IRF2BP1 Polyclonal antibody

Catalog Number: 13698-1-AP

2 Publications



## Basic Information

### Catalog Number:

13698-1-AP

### Size:

150ul, Concentration: 300 ug/ml by Nanodrop and 133 ug/ml by Bradford method using BSA as the standard;

### Source:

Rabbit

### Isotype:

IgG

### Immunogen Catalog Number:

AG4596

### GenBank Accession Number:

BC038222

### GeneID (NCBI):

26145

### UNIPROT ID:

Q8IU81

### Full Name:

interferon regulatory factor 2 binding protein 1

### Calculated MW:

584 aa, 62 kDa

### Observed MW:

62-72 kDa

### Purification Method:

Antigen affinity purification

### Recommended Dilutions:

WB: 1:500-1:1000

IP: 0.5-4.0 ug for 1.0-3.0 mg of total protein lysate

IHC: 1:50-1:500

IF/ICC: 1:50-1:500

## Applications

### Tested Applications:

WB, IHC, IF/ICC, IP, ELISA

### Cited Applications:

WB, ChIP, IF

### Species Specificity:

human, mouse, rat

### Cited Species:

human

**Note-IHC: suggested antigen retrieval with TE buffer pH 9.0; (\*) Alternatively, antigen retrieval may be performed with citrate buffer pH 6.0**

### Positive Controls:

WB : HeLa cells, HEK-293 cells, Jurkat cells, mouse brain tissue, rat lymph tissue

IP : HEK-293 cells,

IHC : human breast cancer tissue,

IF/ICC : HeLa cells,

## Notable Publications

Author	Pubmed ID	Journal	Application
Juan F Correa-Vázquez	33753728	Cell Death Dis	WB
Sina V Barysch	33480129	EMBO Rep	IF,ChIP

## Storage

### Storage:

Store at -20°C. Stable for one year after shipment.

### Storage Buffer:

PBS with 0.02% sodium azide and 50% glycerol, pH7.3

Aliquoting is unnecessary for -20°C storage

\*\*\* 20ul sizes contain 0.1% BSA

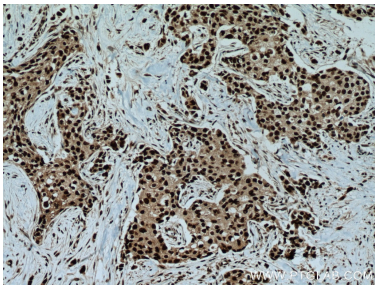
For technical support and original validation data for this product please contact:

T: 1 (888) 4PTGLAB (1-888-478-4522) (toll free in USA), or 1(312) 455-8498 (outside USA)

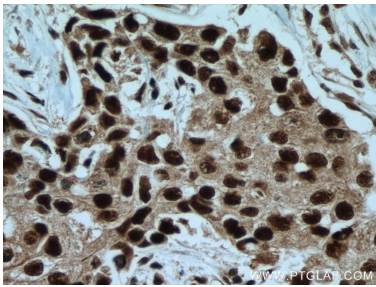
E: [proteintech@ptglab.com](mailto:proteintech@ptglab.com)  
W: [ptglab.com](http://ptglab.com)

This product is exclusively available under Proteintech Group brand and is not available to purchase from any other manufacturer.

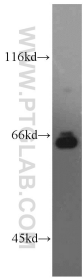
Selected Validation Data



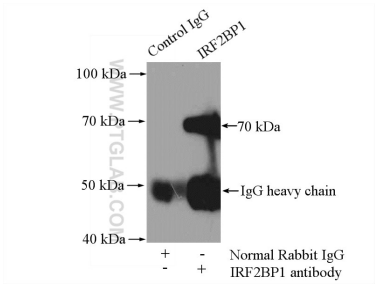
Immunohistochemical analysis of paraffin-embedded human breast cancer tissue slide using 13698-1-AP (IRF2BP1 antibody) at dilution of 1:200 (under 10x lens). Heat mediated antigen retrieval with Tris-EDTA buffer (pH 9.0).



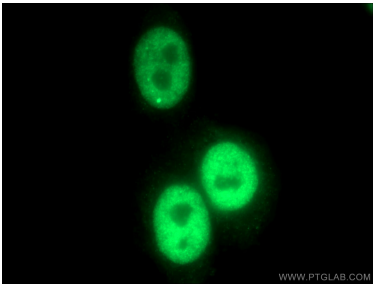
Immunohistochemical analysis of paraffin-embedded human breast cancer tissue slide using 13698-1-AP (IRF2BP1 antibody) at dilution of 1:200 (under 40x lens). Heat mediated antigen retrieval with Tris-EDTA buffer (pH 9.0).



HeLa cells were subjected to SDS PAGE followed by western blot with 13698-1-AP (IRF2BP1 antibody) at dilution of 1:800 incubated at room temperature for 1.5 hours.



IP result of anti-IRF2BP1 (IP:13698-1-AP, 4ug; Detection:13698-1-AP 1:500) with HEK-293 cells lysate 2000ug.



Immunofluorescent analysis of (4% PFA) fixed HeLa cells using 13698-1-AP (IRF2BP1 antibody) at dilution of 1:50 and Alexa Fluor 488-conjugated Goat Anti-Rabbit IgG(H+L).