

For Research Use Only

# CPE Polyclonal antibody

Catalog Number: 13710-1-AP

Featured Product

11 Publications



## Basic Information

### Catalog Number:

13710-1-AP

### Size:

150ul, Concentration: 350 ug/ml by Nanodrop and 153 ug/ml by Bradford method using BSA as the standard;

### Source:

Rabbit

### Isotype:

IgG

### Immunogen Catalog Number:

AG4647

### GenBank Accession Number:

BC033866

### GeneID (NCBI):

1363

### UNIPROT ID:

P16870

### Full Name:

carboxypeptidase E

### Calculated MW:

476 aa, 53 kDa

### Observed MW:

50 kDa, 52 kDa

### Purification Method:

Antigen affinity purification

### Recommended Dilutions:

WB 1:500-1:1000

IP 0.5-4.0 ug for 1.0-3.0 mg of total protein lysate

IHC 1:50-1:500

IF-P 1:200-1:800

IF/ICC 1:50-1:500

## Applications

### Tested Applications:

WB, IHC, IF/ICC, IF-P, IP, ELISA

### Cited Applications:

WB, IHC, IF

### Species Specificity:

human, mouse, rat

### Cited Species:

human, mouse, rat

### Positive Controls:

WB : mouse brain tissue,

IP : mouse brain tissue,

IHC : mouse brain tissue, human pituitary tissue, rat brain tissue

IF-P : mouse brain tissue,

IF/ICC : HepG2 cells,

**Note-IHC: suggested antigen retrieval with TE buffer pH 9.0; (\*) Alternatively, antigen retrieval may be performed with citrate buffer pH 6.0**

## Background Information

CPE(Carboxypeptidase E) is also named as CPH. It belongs to the peptidase M14 family and is involved in the biosynthesis of peptide hormones and neurotransmitters, including insulin. The deduced 476-amino acid human protein contains an N-terminal signal peptide, followed by a 'pro' sequence, a polyarginine stretch, and 2 potential N-glycosylation sites.

## Notable Publications

Author	Pubmed ID	Journal	Application
Kristen E Rohli	36325514	Function (Oxf)	WB
Jing Yu	34630524	Front Genet	WB, IHC
Seokwon Jo	33115825	Diabetes	WB

## Storage

### Storage:

Store at -20°C. Stable for one year after shipment.

### Storage Buffer:

PBS with 0.02% sodium azide and 50% glycerol pH 7.3.

Aliquoting is unnecessary for -20°C storage

\*\*\* 20ul sizes contain 0.1% BSA

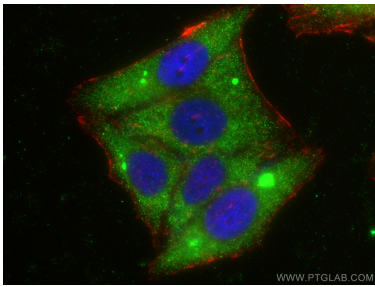
For technical support and original validation data for this product please contact:

T: 1 (888) 4PTGLAB (1-888-478-4522) (toll free in USA), or 1(312) 455-8498 (outside USA)

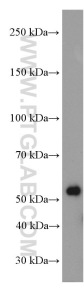
E: [proteintech@ptglab.com](mailto:proteintech@ptglab.com)  
W: [ptglab.com](http://ptglab.com)

This product is exclusively available under Proteintech Group brand and is not available to purchase from any other manufacturer.

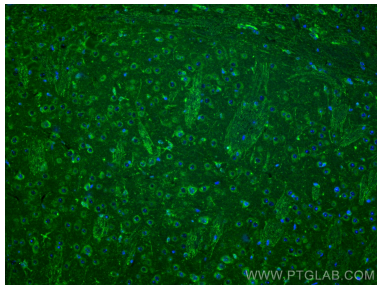
Selected Validation Data



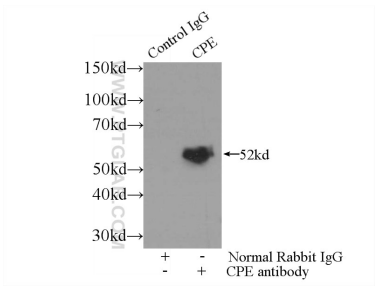
Immunofluorescent analysis of (-20°C Ethanol) fixed HepG2 cells using Carboxypeptidase E antibody (13710-1-AP) at dilution of 1:200 and Coralite®488-Conjugated AffiniPure Goat Anti-Rabbit IgG(H+L), CL594-phalloidin (red).



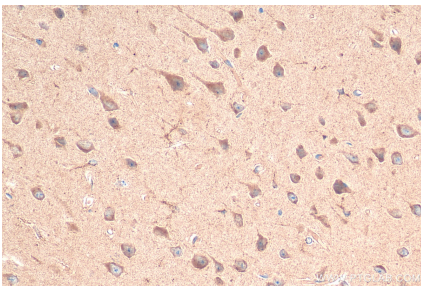
mouse brain tissue were subjected to SDS PAGE followed by western blot with 13710-1-AP (Carboxypeptidase E antibody) at dilution of 1:600 incubated at room temperature for 1.5 hours.



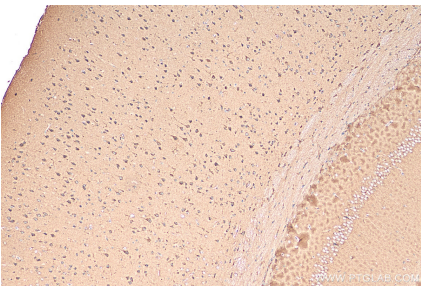
Immunofluorescent analysis of (4% PFA) fixed mouse brain tissue using Carboxypeptidase E antibody (13710-1-AP) at dilution of 1:400 and Coralite®488-Conjugated AffiniPure Goat Anti-Rabbit IgG(H+L).



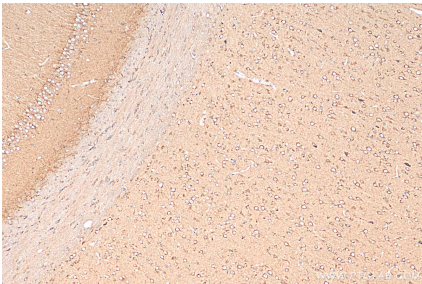
IP result of anti-Carboxypeptidase E (IP:13710-1-AP, 3ug; Detection:13710-1-AP 1:500) with mouse brain tissue lysate 3500ug.



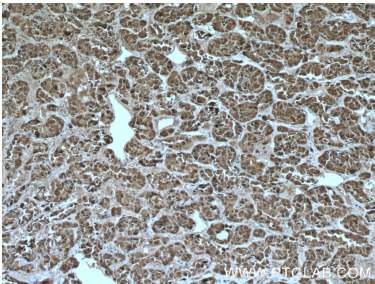
Immunohistochemical analysis of paraffin-embedded mouse brain tissue slide using 13710-1-AP (Carboxypeptidase E antibody) at dilution of 1:200 (under 40x lens). Heat mediated antigen retrieval with Tris-EDTA buffer (pH 9.0).



Immunohistochemical analysis of paraffin-embedded mouse brain tissue slide using 13710-1-AP (Carboxypeptidase E antibody) at dilution of 1:200 (under 10x lens). Heat mediated antigen retrieval with Tris-EDTA buffer (pH 9.0).



Immunohistochemical analysis of paraffin-embedded rat brain tissue slide using 13710-1-AP (Carboxypeptidase E antibody) at dilution of 1:200 (under 10x lens). Heat mediated antigen retrieval with Tris-EDTA buffer (pH 9.0).



Immunohistochemical analysis of paraffin-embedded human pituitary tissue slide using 13710-1-AP (Carboxypeptidase E antibody) at dilution of 1:200 (under 10x lens). Heat mediated antigen retrieval with Tris-EDTA buffer (pH 9.0).