

For Research Use Only

CCDC6 Polyclonal antibody

Catalog Number: 13717-1-AP **3 Publications**



Basic Information

Catalog Number: 13717-1-AP	GenBank Accession Number: BC036757	Purification Method: Antigen affinity purification
Size: 150ul , Concentration: 600 µg/ml by Nanodrop and 400 µg/ml by Bradford method using BSA as the standard;	GeneID (NCBI): 8030	Recommended Dilutions: WB 1:1000-1:4000 IF 1:50-1:500
Source: Rabbit	Full Name: coiled-coil domain containing 6	
Isotype: IgG	Calculated MW: 474 aa, 53 kDa	
Immunogen Catalog Number: AG4658	Observed MW: 65 kDa	

Applications

Tested Applications: IF, WB, ELISA	Positive Controls: WB : HCT 116 cells, HeLa cells, K-562 cells, MCF-7 cells IF : MCF-7 cells,
Cited Applications: WB	
Species Specificity: human	
Cited Species: human	

Background Information

Notable Publications

Author	Pubmed ID	Journal	Application
Xiaoyue Ding	34828386	Genes (Basel)	WB
Xiaotian Sun	31676720	Mol Cancer Res	WB
Duochen Jin	34552818	Mol Ther Nucleic Acids	WB

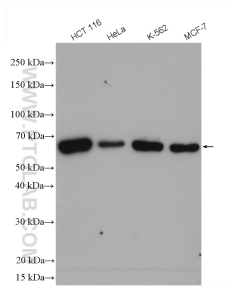
Storage

Storage:
Store at -20°C. Stable for one year after shipment.
Storage Buffer:
PBS with 0.02% sodium azide and 50% glycerol pH 7.3.
Aliquoting is unnecessary for -20°C storage

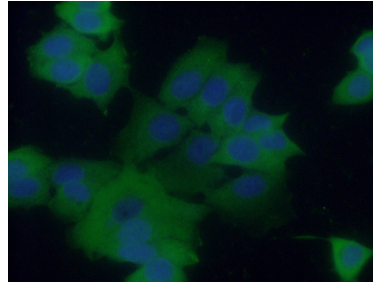
For technical support and original validation data for this product please contact:
T: 1 (888) 4PTGLAB (1-888-478-4522) (toll free in USA), or 1(312) 455-8498 (outside USA)
E: proteintech@ptglab.com
W: ptglab.com

This product is exclusively available under Proteintech Group brand and is not available to purchase from any other manufacturer.

Selected Validation Data



Various lysates were subjected to SDS PAGE followed by western blot with 13717-1-AP (CCDC6 antibody) at dilution of 1:2000 incubated at room temperature for 1.5 hours.



Immunofluorescent analysis of (-20 Ethanol) fixed MCF-7 cells using 13717-1-AP (CCDC6 antibody) at dilution of 1:50 and Alexa Fluor 488-conjugated AffiniPure Goat Anti-Rabbit IgG(H+L).