

For Research Use Only

# BOULE Polyclonal antibody

Catalog Number: 13720-1-AP



## Basic Information

**Catalog Number:**

13720-1-AP

**Size:**

150ul , Concentration: 300 µg/ml by Nanodrop and 133 µg/ml by Bradford method using BSA as the standard;

**Source:**

Rabbit

**Isotype:**

IgG

**Immunogen Catalog Number:**

AG4662

**GenBank Accession Number:**

BC033674

**GeneID (NCBI):**

66037

**Full Name:**

bol, boule-like (Drosophila)

**Calculated MW:**

283 aa, 31 kDa

**Observed MW:**

38-42 kDa

**Purification Method:**

Antigen affinity purification

**Recommended Dilutions:**

WB 1:500-1:1000

IP 0.5-4.0 ug for IP and 1:500-1:2000 for WB

IHC 1:50-1:500

IF 1:50-1:500

## Applications

**Tested Applications:**

IF, IHC, IP, WB, ELISA

**Species Specificity:**

human, mouse, rat

**Note-IHC: suggested antigen retrieval with TE buffer pH 9.0; (\*) Alternatively, antigen retrieval may be performed with citrate buffer pH 6.0**

**Positive Controls:**

WB : mouse testis tissue,

IP : mouse testis tissue,

IHC : mouse ovary tissue, human testis tissue

IF : mouse testis tissue,

## Background Information

### Storage

**Storage:**

Store at -20°C. Stable for one year after shipment.

**Storage Buffer:**

PBS with 0.02% sodium azide and 50% glycerol pH 7.3.

Aliquoting is unnecessary for -20°C storage

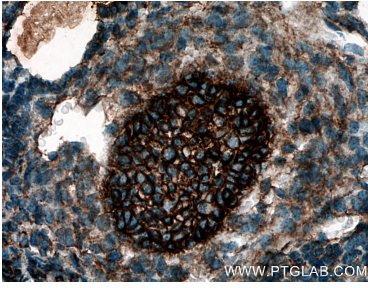
For technical support and original validation data for this product please contact:

T: 1 (888) 4PTGLAB (1-888-478-4522) (toll free in USA), or 1(312) 455-8498 (outside USA)

E: proteintech@ptglab.com  
W: ptglab.com

This product is exclusively available under Proteintech Group brand and is not available to purchase from any other manufacturer.

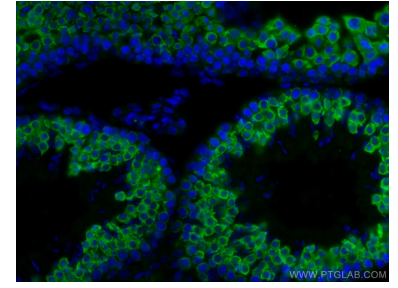
## Selected Validation Data



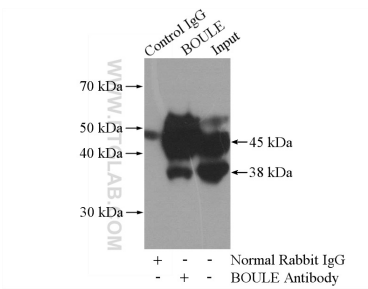
Immunohistochemical analysis of paraffin-embedded mouse ovary tissue slide using 13720-1-AP (BOULE antibody) at dilution of 1:200 (under 40x lens). Heat mediated antigen retrieval with Tris-EDTA buffer (pH 9.0).



mouse testis tissue were subjected to SDS PAGE followed by western blot with 13720-1-AP (BOULE antibody) at dilution of 1:400 incubated at room temperature for 1.5 hours.



Immunofluorescent analysis of (4% PFA) fixed mouse testis tissue using BOULE antibody (13720-1-AP) at dilution of 1:200 and CoraLite@488-Conjugated AffiniPure Goat Anti-Rabbit IgG(H+L).



IP Result of anti-BOULE (IP:13720-1-AP, 4ug; Detection:13720-1-AP 1:1000) with mouse testis tissue lysate 4000ug.