

For Research Use Only

# VPS34 Polyclonal ANTIBODY



Catalog Number: 13723-1-AP **Featured Product**

## Basic Information

**Catalog Number:**

13723-1-AP

**Size:**

150UL, Concentration: 380 µg/ml by Bradford method using BSA as the standard;

**Source:**

Rabbit

**Isotype:**

IgG

**GenBank Accession Number:**

BC053651

**GeneID (NCBI):**

5289

**Full Name:**

phosphoinositide-3-kinase, class 3

**Calculated MW:**

887 aa, 100 kDa

**Observed MW:**

102 kDa

**Purification Method:**

Antigen affinity purification

**Recommended Dilutions:**

WB 1:500-1:3000

IHC 1:20-1:200

## Applications

**Tested Applications:**

IHC, WB, ELISA

**Species Specificity:**

human, mouse, rat

**Note-IHC: suggested antigen retrieval with TE buffer pH 9.0; (\*) Alternatively, antigen retrieval may be performed with citrate buffer pH 6.0**

**Positive Controls:**

**WB:** HeLa cells, mouse testis tissue, mouse lung tissue, Jurkat cells

**IHC:** human heart tissue,

## Background Information

### Storage

**Storage:**

Store at -20°C. Stable for one year after shipment.

**Storage Buffer:**

PBS with 0.02% sodium azide and 50% glycerol pH 7.3.

Aliquoting is unnecessary for -20°C storage

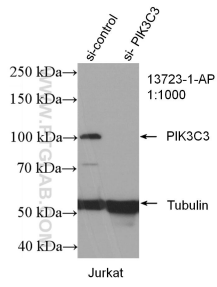
For technical support and original validation data for this product please contact:

T: 1 (888) 4PTGLAB (1-888-478-4522) (toll free in USA), or 1(312) 455-8498 (outside USA)

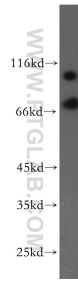
E: proteintech@ptglab.com  
W: ptglab.com

**This product is exclusively available under Proteintech Group brand and is not available to purchase from any other manufacturer.**

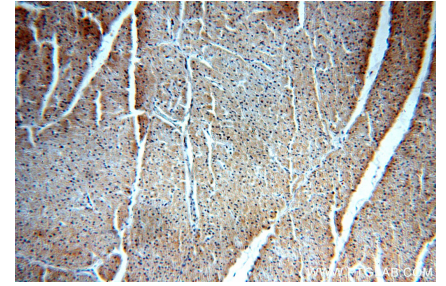
## Selected Validation Data



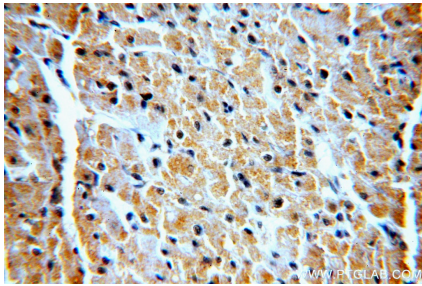
WB result of VPS34 antibody (13723-1-AP; 1:1000; incubated at room temperature for 1.5 hours) with sh-Control and sh-VPS34 transfected Jurkat cells.



HeLa cells were subjected to SDS PAGE followed by western blot with 13723-1-AP (VPS34 antibody) at dilution of 1:800 incubated at room temperature for 1.5 hours.



Immunohistochemical analysis of paraffin-embedded human heart using 13723-1-AP (VPS34 antibody) at dilution of 1:100 (under 10x lens).



Immunohistochemical analysis of paraffin-embedded human heart using 13723-1-AP (VPS34 antibody) at dilution of 1:100 (under 40x lens).