

For Research Use Only

Entactin Polyclonal antibody

Catalog Number: 13766-1-AP



Basic Information

Catalog Number:

13766-1-AP

Size:

150ul, Concentration: 133 µg/ml by Nanodrop and 133 µg/ml by Bradford method using BSA as the standard;

Source:

Rabbit

Isotype:

IgG

Immunogen Catalog Number:

AG4749

GenBank Accession Number:

BC045606

GeneID (NCBI):

4811

Full Name:

nidogen 1

Calculated MW:

1247 aa, 136 kDa

Observed MW:

136-150 kDa

Purification Method:

Antigen affinity purification

Recommended Dilutions:

WB 1:1000-1:4000

IP 0.5-4.0 ug for IP and 1:200-1:1000 for WB

IF 1:50-1:500

Applications

Tested Applications:

IF, IP, WB, ELISA

Species Specificity:

human, mouse, rat

Positive Controls:

WB : human placenta tissue, mouse heart tissue, mouse placenta tissue

IP : human placenta tissue,

IF : HepG2 cells,

Background Information

Storage

Storage:

Store at -20°C. Stable for one year after shipment.

Storage Buffer:

PBS with 0.02% sodium azide and 50% glycerol pH 7.3.

Aliquoting is unnecessary for -20°C storage

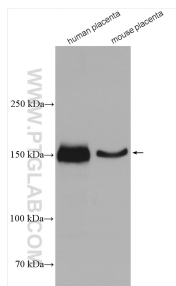
For technical support and original validation data for this product please contact:

T: 1 (888) 4PTGLAB (1-888-478-4522) (toll free in USA), or 1(312) 455-8498 (outside USA)

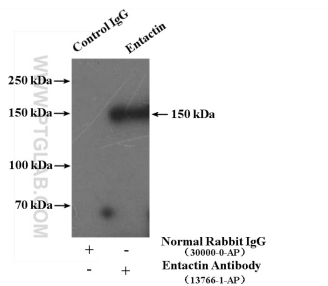
E: proteintech@ptglab.com
W: ptglab.com

This product is exclusively available under Proteintech Group brand and is not available to purchase from any other manufacturer.

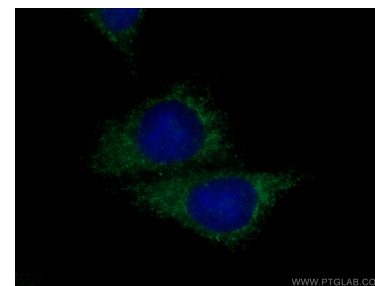
Selected Validation Data



Various lysates were subjected to SDS PAGE followed by western blot with 13766-1-AP (Entactin antibody) at dilution of 1:2000 incubated at room temperature for 1.5 hours.



IP Result of anti-Entactin (IP:13766-1-AP, 4ug; Detection:13766-1-AP 1:200) with human placenta tissue lysate 4000ug.



Immunofluorescent analysis of (-20°C Ethanol) fixed HepG2 cells using 13766-1-AP (Entactin antibody) at dilution of 1:50 and CoraLite488-Conjugated AffiniPure Goat Anti-Rabbit IgG(H+L).