

For Research Use Only

TRAK2 Polyclonal antibody

Catalog Number: 13770-1-AP

5 Publications



Basic Information

Catalog Number:

13770-1-AP

Size:

150ul, Concentration: 750 ug/ml by Nanodrop;

Source:

Rabbit

Isotype:

IgG

Immunogen Catalog Number:

AG4753

GenBank Accession Number:

BC040668

GeneID (NCBI):

66008

UNIPROT ID:

O60296

Full Name:

trafficking protein, kinesin binding 2

Calculated MW:

914 aa, 101 kDa

Observed MW:

101-106 kDa

Purification Method:

Antigen affinity purification

Recommended Dilutions:

WB: 1:500-1:1000

IP: 0.5-4.0 ug for 1.0-3.0 mg of total protein lysate

IHC: 1:20-1:200

IF/ICC: 1:50-1:500

Applications

Tested Applications:

WB, IHC, IF/ICC, IP, ELISA

Cited Applications:

WB

Species Specificity:

human, mouse, rat

Cited Species:

human, mouse, rat, monkey

Note-IHC: suggested antigen retrieval with TE buffer pH 9.0; (*) Alternatively, antigen retrieval may be performed with citrate buffer pH 6.0

Positive Controls:

WB : human liver tissue,

IP : HepG2 cells,

IHC : human liver cancer tissue,

IF/ICC : HeLa cells,

Background Information

Trafficking kinesin-binding protein 2 (TRAK2) is a member of the TRAK family of kinesin adaptor proteins. In mammals, there are two members of the TRAK family, TRAK1 and TRAK2 (PMID: 25653102). TRAK1 and TRAK2 play roles in lysosomal and mitochondrial trafficking in cells. They function as kinesin adaptors linking kinesin heavy chain (KHC) to mitochondria (PMID: 28364549). TRAK2 has been found to act as a trafficking factor for the K⁺ channel Kir2.1 and γ -Aminobutyric acid type A (GABAA) receptor (PMID: 16895905; 24122114).

Notable Publications

Author	Pubmed ID	Journal	Application
Katarzyna Majstrowicz	34013964	J Cell Sci	WB
Haifeng Zhang	32439493	Exp Cell Res	WB
Karolina Drabik	33960016	FASEB J	WB

Storage

Storage:

Store at -20°C. Stable for one year after shipment.

Storage Buffer:

PBS with 0.02% sodium azide and 50% glycerol, pH7.3

Aliquoting is unnecessary for -20°C storage

*** 20ul sizes contain 0.1% BSA

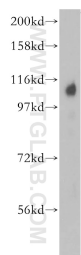
For technical support and original validation data for this product please contact:

T: 1 (888) 4PTGLAB (1-888-478-4522) (toll free in USA), or 1(312) 455-8498 (outside USA)

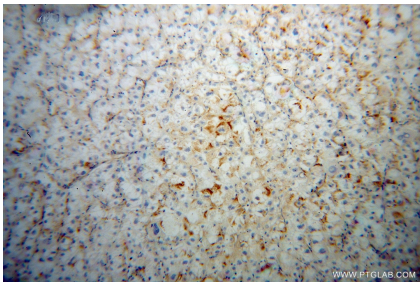
E: proteintech@ptglab.com
W: ptglab.com

This product is exclusively available under Proteintech Group brand and is not available to purchase from any other manufacturer.

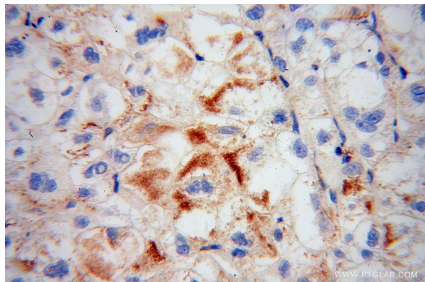
Selected Validation Data



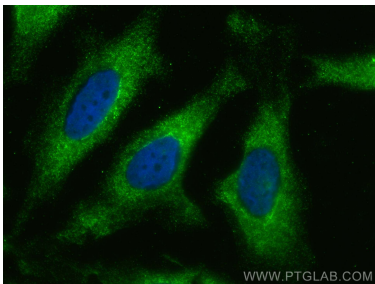
human liver tissue were subjected to SDS PAGE followed by western blot with 13770-1-AP (TRAK2 antibody) at dilution of 1:500 incubated at room temperature for 1.5 hours.



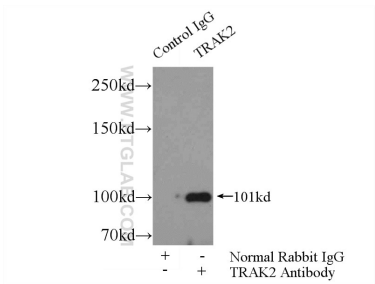
Immunohistochemical analysis of paraffin-embedded human liver cancer using 13770-1-AP (TRAK2 antibody) at dilution of 1:100 (under 10x lens).



Immunohistochemical analysis of paraffin-embedded human liver cancer using 13770-1-AP (TRAK2 antibody) at dilution of 1:100 (under 40x lens).



Immunofluorescent analysis of (-20°C Ethanol) fixed HeLa cells using TRAK2 antibody (13770-1-AP) at dilution of 1:200 and CoraLite®488-Conjugated AffiniPure Goat Anti-Rabbit IgG(H+L).



IP result of anti-TRAK2 (IP:13770-1-AP, 4ug; Detection:13770-1-AP 1:500) with HepG2 cells lysate 4000ug.