

For Research Use Only

Radixin Polyclonal antibody

Catalog Number: 13790-1-AP

2 Publications



Basic Information

Catalog Number:

13790-1-AP

Size:

150ul, Concentration: 700 ug/ml by Nanodrop and 313 ug/ml by Bradford method using BSA as the standard;

Source:

Rabbit

Isotype:

IgG

Immunogen Catalog Number:

AG4813

GenBank Accession Number:

BC047109

GeneID (NCBI):

5962

UNIPROT ID:

P35241

Full Name:

radixin

Calculated MW:

583 aa, 68 kDa

Observed MW:

75 kDa

Purification Method:

Antigen affinity purification

Recommended Dilutions:

WB 1:2000-1:12000

IHC 1:20-1:200

IF/ICC 1:200-1:800

Applications

Tested Applications:

WB, IHC, IF/ICC, ELISA

Cited Applications:

WB, IF

Species Specificity:

human, mouse, rat

Cited Species:

human, mouse

Note-IHC: suggested antigen retrieval with TE buffer pH 9.0; (*) Alternatively, antigen retrieval may be performed with citrate buffer pH 6.0

Positive Controls:

WB : HEK-293 cells, mouse pancreas tissue, Y79 cells, rat pancreas tissue

IHC : human pancreas cancer tissue, human liver cancer tissue, human pancreas tissue

IF/ICC : MCF-7 cells,

Background Information

Radixin belongs to the ezrin-radixin-moesin (ERM) family of proteins which act as cross-linkers between membrane and actin cytoskeleton. ERM proteins provide structural links to strengthen the cell cortex and facilitate several key cellular processes, including membrane dynamics, substrate adhesion, cell survival, cell adhesion, and motility. The function of ERM proteins is highly reliant on phosphorylation induced conformational changes in response to chemokine and antigen stimulation.

Notable Publications

Author	Pubmed ID	Journal	Application
Mark Pines	28082118	Am J Pathol	IF
Xin Zhang	38924997	Drug Resist Updat	WB

Storage

Storage:

Store at -20°C. Stable for one year after shipment.

Storage Buffer:

PBS with 0.02% sodium azide and 50% glycerol pH 7.3.

Aliquoting is unnecessary for -20°C storage

*** 20ul sizes contain 0.1% BSA

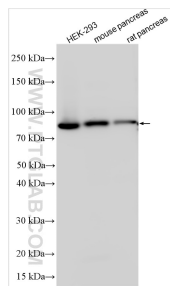
For technical support and original validation data for this product please contact:

T: 1 (888) 4PTGLAB (1-888-478-4522) (toll free in USA), or 1(312) 455-8498 (outside USA)

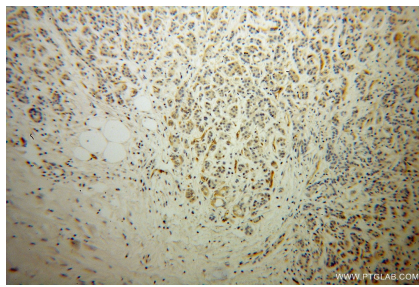
E: proteintech@ptglab.com
W: ptglab.com

This product is exclusively available under Proteintech Group brand and is not available to purchase from any other manufacturer.

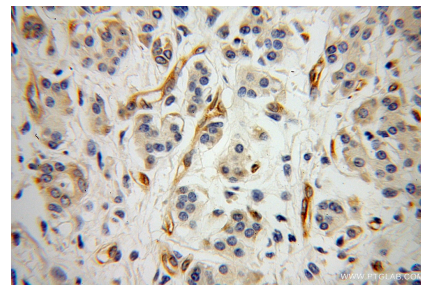
Selected Validation Data



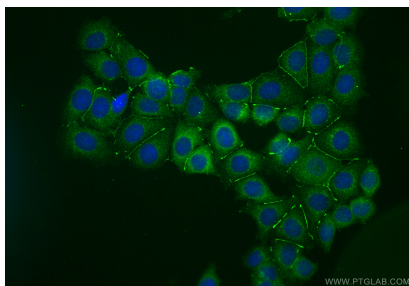
Various lysates were subjected to SDS PAGE followed by western blot with 13790-1-AP (Radixin antibody) at dilution of 1:6000 incubated at room temperature for 1.5 hours.



Immunohistochemical analysis of paraffin-embedded human pancreas cancer using 13790-1-AP (Radixin antibody) at dilution of 1:100 (under 10x lens).



Immunohistochemical analysis of paraffin-embedded human pancreas cancer using 13790-1-AP (Radixin antibody) at dilution of 1:100 (under 40x lens).



Immunofluorescent analysis of (-20°C Methanol) fixed MCF-7 cells using Radixin antibody (13790-1-AP) at dilution of 1:400 and CoraLite®488-Conjugated Goat Anti-Rabbit IgG(H+L) (SA00013-2).