

For Research Use Only

Serpin E1/PAI-1 Polyclonal antibody

Catalog Number: 13801-1-AP

64 Publications



Basic Information

Catalog Number:

13801-1-AP

Size:

150ul, Concentration: 333 ug/ml by Bradford method using BSA as the standard;

Source:

Rabbit

Isotype:

IgG

Immunogen Catalog Number:

AG4777

GenBank Accession Number:

BC010860

GeneID (NCBI):

5054

UNIPROT ID:

P05121

Full Name:

serpin peptidase inhibitor, clade E (nexin, plasminogen activator inhibitor type 1), member 1

Calculated MW:

402 aa, 45 kDa

Observed MW:

45 kDa

Purification Method:

Antigen affinity purification

Recommended Dilutions:

WB: 1:1000-1:4000

IP: 0.5-4.0 ug for 1.0-3.0 mg of total protein lysate

IHC: 1:200-1:800

IF/ICC: 1:50-1:500

Applications

Tested Applications:

WB, IHC, IF/ICC, IP, ELISA

Cited Applications:

WB, IHC, IF, ColP

Species Specificity:

human

Cited Species:

human, bovine

Positive Controls:

WB: HepG2 cells, HuH-7 cells, L02 cells, MG-63 cells, U2OS cells, human placenta tissue

IP: HepG2 cells,

IHC: human placenta tissue, human malignant melanoma tissue

IF/ICC: HUVEC cells, HepG2 cells

Note-IHC: suggested antigen retrieval with TE buffer pH 9.0; (*) Alternatively, antigen retrieval may be performed with citrate buffer pH 6.0

Background Information

SERPINE1, also named as Plasminogen activator inhibitor type 1 (PAI-1), is a member of the serine protease inhibitor (SERPIN) superfamily. PAI-1 is the principal inhibitor of tPA and uPA, and hence is an inhibitor of fibrinolysis. Defects in this gene are the cause of plasminogen activator inhibitor-1 deficiency (PAI-1 deficiency), and high concentrations of the gene product are associated with thrombophilia. In western blotting, we got two bands 50 kDa and 90-110 kDa, and 90-110 kDa consistent with PAI-1 in complex with its target protease, t-PA (PMID: 21596853).

Notable Publications

Author	Pubmed ID	Journal	Application
Yasuhiro Nanri	31505128	Am J Respir Cell Mol Biol	IHC
Zengqiang Miao	31734109	J Microbiol Immunol Infect	WB
Muhammad Khan	36389725	Front Immunol	IHC

Storage

Storage:

Store at -20°C. Stable for one year after shipment.

Storage Buffer:

PBS with 0.02% sodium azide and 50% glycerol, pH7.3

Aliquoting is unnecessary for -20°C storage

*** 20ul sizes contain 0.1% BSA

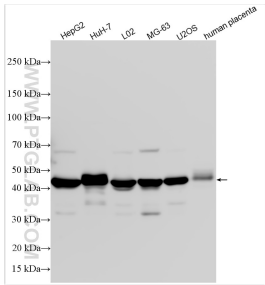
For technical support and original validation data for this product please contact:

T: 1 (888) 4PTGLAB (1-888-478-4522) (toll free in USA), or 1(312) 455-8498 (outside USA)

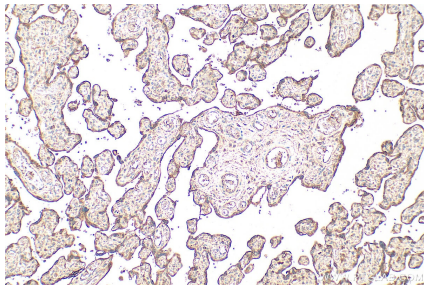
E: proteintech@ptglab.com
W: ptglab.com

This product is exclusively available under Proteintech Group brand and is not available to purchase from any other manufacturer.

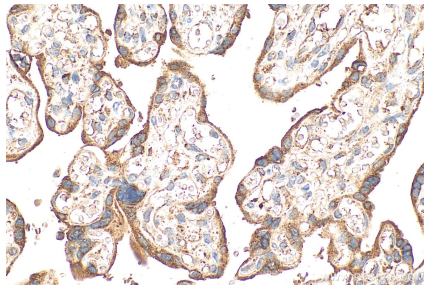
Selected Validation Data



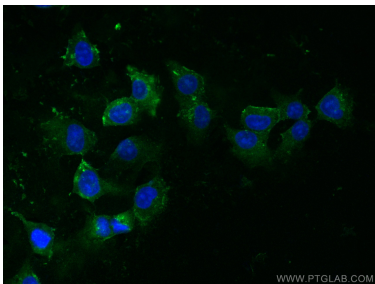
Various lysates were subjected to SDS PAGE followed by western blot with 13801-1-AP (Serpin E1/PAI-1 antibody) at dilution of 1:2000 incubated at room temperature for 1.5 hours.



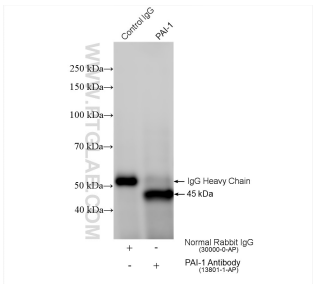
Immunohistochemical analysis of paraffin-embedded human placenta tissue slide using 13801-1-AP (Serpin E1/PAI-1 antibody) at dilution of 1:400 (under 10x lens). Heat mediated antigen retrieval with Tris-EDTA buffer (pH 9.0).



Immunohistochemical analysis of paraffin-embedded human placenta tissue slide using 13801-1-AP (Serpin E1/PAI-1 antibody) at dilution of 1:400 (under 40x lens). Heat mediated antigen retrieval with Tris-EDTA buffer (pH 9.0).



Immunofluorescent analysis of (-20°C Ethanol) fixed HUVEC cells using PAI-1 antibody (13801-1-AP) at dilution of 1:200 and CoraLite®488-Conjugated AffiniPure Goat Anti-Rabbit IgG(H+L).



IP result of anti-PAI-1 (IP:13801-1-AP, 4ug; Detection:13801-1-AP 1:2000) with HepG2 cells lysate 1360 ug.