

For Research Use Only

NPHP4 Polyclonal antibody

Catalog Number: 13812-1-AP

13 Publications



Basic Information

Catalog Number:

13812-1-AP

Size:

150ul, Concentration: 350 ug/ml by Nanodrop;

Source:

Rabbit

Isotype:

IgG

Immunogen Catalog Number:

AG4875

GenBank Accession Number:

BC040520

GeneID (NCBI):

261734

UNIPROT ID:

O75161

Full Name:

nephronophthisis 4

Calculated MW:

1426 aa, 158 kDa

Observed MW:

150 kDa

Purification Method:

Antigen affinity purification

Recommended Dilutions:

WB: 1:500-1:1000

IHC: 1:20-1:200

IF/ICC: 1:10-1:100

Applications

Tested Applications:

WB, IHC, IF/ICC, ELISA

Cited Applications:

WB, IF

Species Specificity:

human, mouse, canine

Cited Species:

human, mouse

Note-IHC: suggested antigen retrieval with TE buffer pH 9.0; (*) Alternatively, antigen retrieval may be performed with citrate buffer pH 6.0

Positive Controls:

WB : mouse brain tissue, Y79 cells

IHC : human heart tissue,

IF/ICC : hTERT-RPE1 cells, MDCK cells

Background Information

NPHP4, also named as KIAA0673, is a cilia-associated protein which involved in the organization of apical junctions in kidney cells together with NPHP1 and RPKRIP1L/NPHP8. It is necessary for normal photoreceptor ribbon synapse maintenance and outer segment formation, and for sperm development.

Notable Publications

Author	Pubmed ID	Journal	Application
Stephanie O Agbu	29038301	J Cell Biol	IF
Anna Kazatskaya	29021280	Genetics	IF
Chuan Chen	34162535	Sci Adv	IF

Storage

Storage:

Store at -20°C. Stable for one year after shipment.

Storage Buffer:

PBS with 0.02% sodium azide and 50% glycerol, pH7.3

Aliquoting is unnecessary for -20°C storage

*** 20ul sizes contain 0.1% BSA

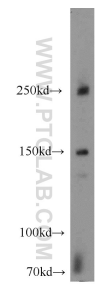
For technical support and original validation data for this product please contact:

T: 1 (888) 4PTGLAB (1-888-478-4522) (toll free in USA), or 1(312) 455-8498 (outside USA)

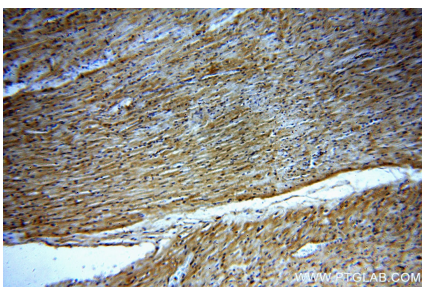
E: proteintech@ptglab.com
W: ptglab.com

This product is exclusively available under Proteintech Group brand and is not available to purchase from any other manufacturer.

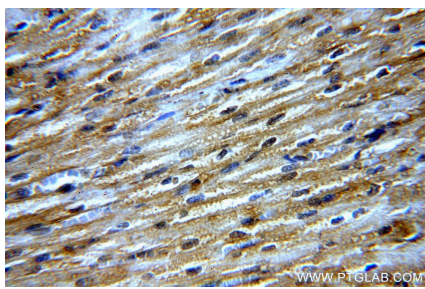
Selected Validation Data



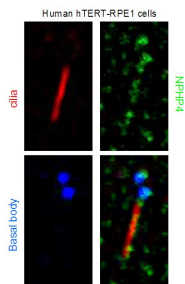
mouse brain tissue were subjected to SDS PAGE followed by western blot with 13812-1-AP (NPHP4 antibody) at dilution of 1:600 incubated at room temperature for 1.5 hours.



Immunohistochemical analysis of paraffin-embedded human heart using 13812-1-AP (NPHP4 antibody) at dilution of 1:50 (under 10x lens).



Immunohistochemical analysis of paraffin-embedded human heart using 13812-1-AP (NPHP4 antibody) at dilution of 1:50 (under 40x lens).



IF result from Dr. Corbit, Kevin. anti-NPHP4 (13812-1-AP) marks the ciliary axoneme, basal bodies, and the transition zone of Human hTERT-RPE1 cells.