

For Research Use Only

# GLRA2 Polyclonal antibody

Catalog Number: 13831-1-AP



## Basic Information

<b>Catalog Number:</b> 13831-1-AP	<b>GenBank Accession Number:</b> BC032864	<b>Purification Method:</b> Antigen affinity purification
<b>Size:</b> 150ul , Concentration: 300 µg/ml by Nanodrop and 153 µg/ml by Bradford method using BSA as the standard;	<b>GeneID (NCBI):</b> 2742	<b>Recommended Dilutions:</b> WB 1:500-1:1000 IHC 1:20-1:200
<b>Source:</b> Rabbit	<b>Full Name:</b> glycine receptor, alpha 2	
<b>Isotype:</b> IgG	<b>Calculated MW:</b> 452 aa, 52 kDa	
<b>Immunogen Catalog Number:</b> AG4743	<b>Observed MW:</b> 48 kDa	

## Applications

<b>Tested Applications:</b> IHC, WB, ELISA	<b>Positive Controls:</b> WB : PBMC cells, IHC : mouse brain tissue,
<b>Species Specificity:</b> human, mouse, rat	
<b>Note-IHC: suggested antigen retrieval with TE buffer pH 9.0; (*) Alternatively, antigen retrieval may be performed with citrate buffer pH 6.0</b>	

## Background Information

Glycine is an inhibitory neurotransmitter in the central nervous system. The glycine receptor (GlyR) is a member of the nicotinic acetylcholine receptor of ligand-gated ion channels. This receptor has important roles in a variety of physiological processes, especially in mediating inhibitory neurotransmission in the spinal cord and brain stem. GlyR is a pentameric receptor comprised of alpha and beta subunits. Four alpha-subunits (GLRA1, GLRA2, GLRA3, GLRA4) and one beta-subunit (GLRB) of GlyR have been identified. (PMID: 11409700; 15383648)

## Storage

**Storage:**  
Store at -20°C. Stable for one year after shipment.  
**Storage Buffer:**  
PBS with 0.02% sodium azide and 50% glycerol pH 7.3.  
Aliquoting is unnecessary for -20°C storage

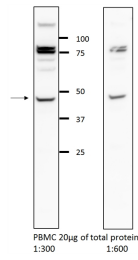
For technical support and original validation data for this product please contact:

T: 1 (888) 4PTGLAB (1-888-478-4522) (toll free in USA), or 1(312) 455-8498 (outside USA)

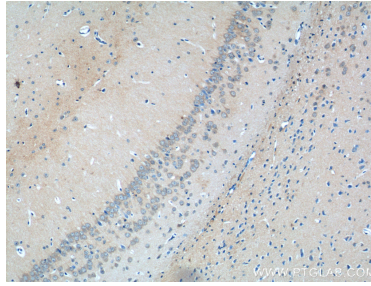
E: [proteintech@ptglab.com](mailto:proteintech@ptglab.com)  
W: [ptglab.com](http://ptglab.com)

**This product is exclusively available under Proteintech Group brand and is not available to purchase from any other manufacturer.**

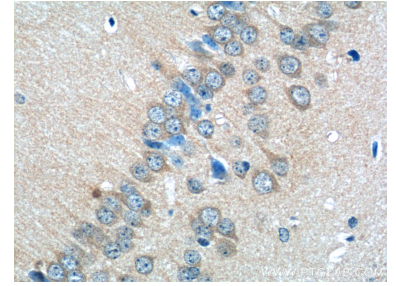
## Selected Validation Data



WB result of GLRA2 antibody (13831-1-AP, 1:600) with PBMC cells. Proteintech  $\alpha$ GLRA2 13831-1-AP in 10% BSA / TBS 0.05% Tween-20 O/N @ 4°C Goat anti-rabbit HRP 1:10000 in 5% milk / TBS 0.05% Tween-20 1h @ RT.



Immunohistochemical analysis of paraffin-embedded mouse brain tissue slide using 13831-1-AP (GLRA2 Antibody) at dilution of 1:50 (under 10x lens).



Immunohistochemical analysis of paraffin-embedded mouse brain tissue slide using 13831-1-AP (GLRA2 Antibody) at dilution of 1:50 (under 40x lens).