

For Research Use Only

CCPG1 Polyclonal antibody

Catalog Number: 13861-1-AP

Featured Product

6 Publications



Basic Information

Catalog Number:
13861-1-AP

Size:
150ul, Concentration: 267 µg/ml by
Bradford method using BSA as the
standard;

Source:
Rabbit

Isotype:
IgG

Immunogen Catalog Number:
AG4841

GenBank Accession Number:
BC034914

GeneID (NCBI):
9236

Full Name:
cell cycle progression 1

Calculated MW:
87 kDa

Observed MW:
87 kDa

Purification Method:
Antigen affinity purification

Recommended Dilutions:
WB 1:500-1:1000
IP 0.5-4.0 ug for IP and 1:500-1:1000
for WB
IHC 1:50-1:500

Applications

Tested Applications:
IHC, IP, WB, ELISA

Cited Applications:
IP, WB

Species Specificity:
human, mouse, rat

Cited Species:
human

**Note-IHC: suggested antigen retrieval with
TE buffer pH 9.0; (*) Alternatively, antigen
retrieval may be performed with citrate
buffer pH 6.0**

Positive Controls:

WB: mouse lung tissue, THP-1 cells, mouse liver tissue

IP: mouse brain tissue,

IHC: human stomach cancer tissue,

Background Information

CCPG1 has 5 isoforms with MW 87 kDa, 93 kDa, 71 kDa, 68 kDa and 48 kDa. This antibody is induced by C-terminal of CCPG1. It recognizes all the five isoforms.

Notable Publications

Author	Pubmed ID	Journal	Application
Svenja Zielke	33111629	Autophagy	WB
Corey N Cunningham	31176671	Mol Cell	WB
Susanne Zellner	33545068	Mol Cell	WB

Storage

Storage:

Store at -20°C. Stable for one year after shipment.

Storage Buffer:

PBS with 0.02% sodium azide and 50% glycerol pH 7.3.

Aliquoting is unnecessary for -20°C storage

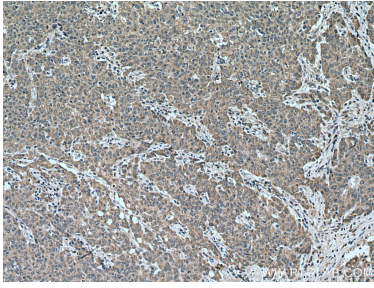
For technical support and original validation data for this product please contact:

T: 1 (888) 4PTGLAB (1-888-478-4522) (toll free
in USA), or 1(312) 455-8498 (outside USA)

E: proteintech@ptglab.com
W: ptglab.com

**This product is exclusively available under Proteintech
Group brand and is not available to purchase from any
other manufacturer.**

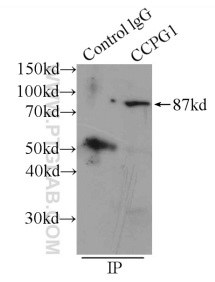
Selected Validation Data



Immunohistochemical analysis of paraffin-embedded human stomach cancer tissue slide using 13861-1-AP (CCPG1 antibody) at dilution of 1:200 (under 10x lens). Heat mediated antigen retrieval with Tris-EDTA buffer (pH 9.0).



mouse lung tissue were subjected to SDS PAGE followed by western blot with 13861-1-AP (CCPG1 antibody) at dilution of 1:800 incubated at room temperature for 1.5 hours.



IP Result of anti-CCPG1 (IP:13861-1-AP, 4ug; Detection:13861-1-AP 1:500) with mouse brain tissue lysate 6000ug.