

For Research Use Only

S1PR5/EDG8 Polyclonal antibody



Catalog Number: 13874-1-AP

1 Publications

Basic Information

Catalog Number: 13874-1-AP	GenBank Accession Number: BC034703	Purification Method: Antigen affinity purification
Size: 150ul , Concentration: 350 µg/ml by Nanodrop and 200 µg/ml by Bradford method using BSA as the standard;	GeneID (NCBI): 53637	Recommended Dilutions: WB 1:500-1:1000
Source: Rabbit	Full Name: sphingosine-1-phosphate receptor 5	
Isotype: IgG	Calculated MW: 398 aa, 42 kDa	
Immunogen Catalog Number: AG4928	Observed MW: 50-55 kDa	

Applications

Tested Applications: FC, WB, ELISA	Positive Controls: WB : mouse brain tissue, HEK-293 cells, HeLa cells, Jurkat cells, K-562 cells
Cited Applications: WB	
Species Specificity: human, mouse	
Cited Species: human	

Background Information

Sphingosine 1-phosphate (S1P) is a biologically active lysophospholipid that elicits diverse physiological effect on most types of cells and tissues via five G protein-coupled receptors, S1PR1 to S1PR5. S1PRs differ in their tissue expression and cell lineage: S1PR1-3 are expressed throughout the immune, central nervous system (CNS), and cardiovascular system; S1PR4 is primarily expressed in lymphoid tissue; and S1PR5 is a predominant receptor in CNS white matter, spleen and natural killer cells (PMID: 21707490). S1PR5 (also known as EDG8) has been involved in the trafficking of NK cells and monocytes (PMID: 21911833; 23519784).

Notable Publications

Author	Pubmed ID	Journal	Application
Rie Matsushima-Nishiwaki	30543684	PLoS One	WB

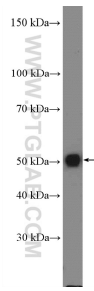
Storage

Storage:
Store at -20°C. Stable for one year after shipment.
Storage Buffer:
PBS with 0.02% sodium azide and 50% glycerol pH 7.3.
Aliquoting is unnecessary for -20°C storage

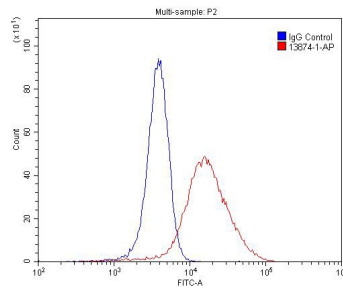
For technical support and original validation data for this product please contact:
T: 1 (888) 4PTGLAB (1-888-478-4522) (toll free in USA), or 1(312) 455-8498 (outside USA)
E: proteintech@ptglab.com
W: ptglab.com

This product is exclusively available under Proteintech Group brand and is not available to purchase from any other manufacturer.

Selected Validation Data



mouse brain tissue were subjected to SDS PAGE followed by western blot with 13874-1-AP (S1PR5/EDG8 antibody at dilution of 1:600 incubated at room temperature for 1.5 hours.



1×10^6 SH-SY5Y cells were stained with 0.2ug S1PR5/EDG8 antibody (13874-1-AP, red) and control antibody (blue). Fixed with 4% PFA blocked with 3% BSA (30 min). Alexa Fluor 488-conjugated AffiniPure Goat Anti-Rabbit IgG(H+L) with dilution 1:1500.