

For Research Use Only

NR1D2 Polyclonal antibody

Catalog Number: 13906-1-AP **3 Publications**



Basic Information

Catalog Number: 13906-1-AP	GenBank Accession Number: BC045613	Purification Method: Antigen affinity purification
Size: 150ul , Concentration: 200 µg/ml by Bradford method using BSA as the standard;	GeneID (NCBI): 9975	Recommended Dilutions: WB 1:200-1:1000
Source: Rabbit	Full Name: nuclear receptor subfamily 1, group D, member 2	
Isotype: IgG	Calculated MW: 579 aa, 65 kDa	
Immunogen Catalog Number: AG4881	Observed MW: 70 kDa	

Applications

Tested Applications: WB,ELISA	Positive Controls: WB : HeLa cells,
Cited Applications: IHC, WB	
Species Specificity: human	
Cited Species: human, mouse	

Background Information

Notable Publications

Author	Pubmed ID	Journal	Application
Sobuj Mia	32357113	Am J Physiol Heart Circ Physiol	WB
Min Chen	32118505	Xenobiotica	WB
Zhengzheng Duan	27562222	Sci Rep	WB,IHC

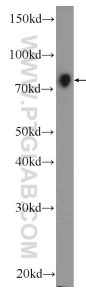
Storage

Storage:
Store at -20°C. Stable for one year after shipment.
Storage Buffer:
PBS with 0.02% sodium azide and 50% glycerol pH 7.3.
Aliquoting is unnecessary for -20°C storage

For technical support and original validation data for this product please contact:
T: 1 (888) 4PTGLAB (1-888-478-4522) (toll free in USA), or 1(312) 455-8498 (outside USA)
E: proteintech@ptglab.com
W: ptglab.com

This product is exclusively available under Proteintech Group brand and is not available to purchase from any other manufacturer.

Selected Validation Data



HeLa cells were subjected to SDS PAGE followed by western blot with 13906-1-AP (NR1D2 Antibody) at dilution of 1:300 incubated at room temperature for 1.5 hours.