

For Research Use Only

ADAP1 Polyclonal ANTIBODY

Catalog Number: 13911-1-AP



Basic Information

Catalog Number:
13911-1-AP

Size:
34 µg/150 µl

Source:
Rabbit

Isotype:
IgG

Purification Method:
Antigen affinity purification

Immunogen Catalog Number:
AG4898

GenBank Accession Number:
BC033747

GeneID (NCBI):
11033

Full Name:
Arf GAP with dual PH domains 1

Calculated MW:
374aa, 43 kDa

Observed MW:
43 kDa

Recommended Dilutions:

WB 1:500-1:2000

IHC 1:50-1:500

IF 1:20-1:200

Applications

Tested Applications:

IF, IHC, WB, ELISA

Species Specificity:

human,mouse,rat

Note: suggested antigen retrieval with TE buffer pH 9.0; (*) Alternatively, antigen retrieval may be performed with citrate buffer pH 6.0

Positive Controls:

WB : human brain tissue;

IHC : human gliomas tissue;

IF : MCF-7 cells; HeLa cells

Background Information

Notable Publications

Author	Pubmed ID	Journal	Application
--------	-----------	---------	-------------

Storage

Storage:

Store at -20°C. Stable for one year after shipment.

Storage Buffer:

PBS with 0.02% sodium azide and 50% glycerol pH 7.3.

Aliquoting is unnecessary for -20°C storage

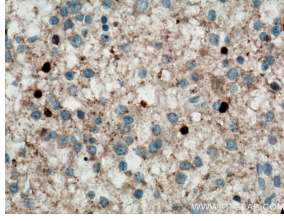
For technical support and original validation data for this product please contact:

T: 1 (888) 4PTGLAB (1-888-478-4522) (toll free in USA), or 1(312) 455-8498 (outside USA)

E: proteintech@ptglab.com
W: ptglab.com

This product is exclusively available under Proteintech Group brand and is not available to purchase from any other manufacturer.

Selected Validation Data



Immunohistochemistry of paraffin-embedded human gliomas tissue slide using 13911-1-AP(ADAP1 antibody) at dilution of 1:200 (under 40x lens) heat mediated antigen retrieved with Tris-EDTA buffer(pH9).



human brain tissue were subjected to SDS PAGE followed by western blot with 13911-1-AP(ADAP1 antibody) at dilution of 1:1000 incubated at room temperature for 1.5 hours



Immunofluorescent analysis of MCF-7 cells, using ADAP1 antibody 13911-1-AP at 1:50 dilution and Rhodamine-labeled goat anti-rabbit IgG (red). Blue pseudocolor = DAPI (fluorescent DNA dye).