

For Research Use Only

MDP-1 Polyclonal ANTIBODY

Catalog Number: 13929-1-AP



Basic Information

Catalog Number:
13929-1-AP

Size:
40 µg/150 µl

Source:
Rabbit

Isotype:
IgG

Purification Method:
Antigen affinity purification

Immunogen Catalog Number:
AC4949

GenBank Accession Number:
BC046912

GeneID (NCBI):
145553

Full Name:
magnesium-dependent phosphatase 1

Calculated MW:
14 kDa

Observed MW:
14 kDa

Recommended Dilutions:

WB 1:200-1:1000

IHC 1:20-1:200

Applications

Tested Applications:

IHC, WB, ELISA

Species Specificity:

human,mouse,rat

Note: suggested antigen retrieval with TE buffer pH 9.0; (*) Alternatively, antigen retrieval may be performed with citrate buffer pH 6.0

Positive Controls:

WB : RAW 264.7 cells; HepG2 cells

IHC : human liver tissue;

Background Information

Notable Publications

Author	Pubmed ID	Journal	Application
--------	-----------	---------	-------------

Storage

Storage:

Store at -20°C. Stable for one year after shipment.

Storage Buffer:

PBS with 0.1% sodium azide and 50% glycerol pH 7.3.

Aliquoting is unnecessary for -20°C storage

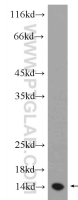
For technical support and original validation data for this product please contact:

T: 1 (888) 4PTGLAB (1-888-478-4522) (toll free in USA), or 1(312) 455-8498 (outside USA)

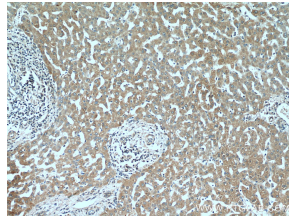
E: proteintech@ptglab.com
W: ptglab.com

This product is exclusively available under Proteintech Group brand and is not available to purchase from any other manufacturer.

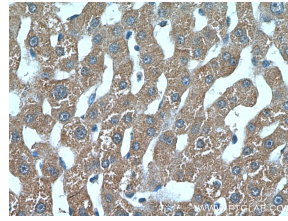
Selected Validation Data



RAW 264.7 cells were subjected to SDS PAGE followed by western blot with 13929-1-APY (MDP-1 Antibody) at dilution of 1:100 incubated at room temperature for 1.5 hours



Immunohistochemistry of paraffin-embedded human liver tissue slide using 13929-1-APY (MDP-1 Antibody) at dilution of 1:100 (under 10x lens).



Immunohistochemistry of paraffin-embedded human liver tissue slide using 13929-1-APY (MDP-1 Antibody) at dilution of 1:100 (under 40x lens).