

For Research Use Only

EMB Polyclonal ANTIBODY



Catalog Number: 13946-1-AP

Basic Information

Catalog Number: 13946-1-AP	GenBank Accession Number: BC059398	Purification Method: Antigen affinity purification
Size: 150UL, Concentration: 187 µg/ml by Bradford method using BSA as the standard;	GeneID (NCBI): 133418	Recommended Dilutions: WB 1:500-1:2000 IHC 1:20-1:200
Source: Rabbit	Full Name: embigin homolog (mouse)	
Isotype: IgG	Calculated MW: 37 kDa	
Immunogen Catalog Number: AG5031	Observed MW: 70 kDa	

Applications

Tested Applications: IHC, WB, ELISA	Positive Controls: WB: HeLa cells, mouse skeletal muscle tissue IHC: human testis tissue,
Species Specificity: human, mouse	
Note-IHC: suggested antigen retrieval with TE buffer pH 9.0; (*) Alternatively, antigen retrieval may be performed with citrate buffer pH 6.0	

Background Information

EMB, also named as Embigin, is a 327 amino acid protein, which contains two Ig-like V-type (immunoglobulin-like) domains. EMB as a membrane protein may function as a regulator of cell/ECM interactions during development and in the homeostasis of normal adult tissues. EMB is a transmembrane glycoprotein with a protein component of 34 kDa, but western blot analysis of embigin in mouse soleus muscles detects a glycosylated full-length protein with a molecular mass of 70 kDa. (PMID: 19164284)

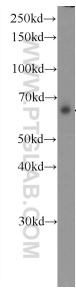
Storage

Storage:
Store at -20°C. Stable for one year after shipment.
Storage Buffer:
PBS with 0.1% sodium azide and 50% glycerol pH 7.3.
Aliquoting is unnecessary for -20°C storage

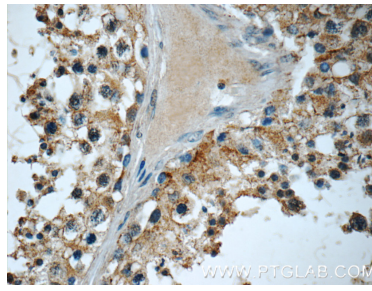
For technical support and original validation data for this product please contact:
T: 1 (888) 4PTGLAB (1-888-478-4522) (toll free in USA), or 1(312) 455-8498 (outside USA)
E: proteintech@ptglab.com
W: ptglab.com

This product is exclusively available under Proteintech Group brand and is not available to purchase from any other manufacturer.

Selected Validation Data



HeLa cells were subjected to SDS PAGE followed by western blot with 13946-1-AP (EMB Antibody) at dilution of 1:1000 incubated at room temperature for 1.5 hours.



Immunohistochemical analysis of paraffin-embedded human testis tissue slide using 13946-1-AP (EMB Antibody) at dilution of 1:50 (under 40x lens).