

For Research Use Only

ALDH1A2 Polyclonal ANTIBODY



Catalog Number: 13951-1-AP

4 Publications

Basic Information

Catalog Number:
13951-1-AP

Size:
53 µg/150 µl

Source:
Rabbit

Isotype:
IgG

Purification Method:
Antigen affinity purification

Immunogen Catalog Number:
AG5062

GenBank Accession Number:
BC030589

GeneID (NCBI):
8854

Full Name:
aldehyde dehydrogenase 1 family, member A2

Calculated MW:
518aa, 57 kDa

Observed MW:
53-57 kDa

Recommended Dilutions:

WB : 1:500-1:2000

IP 0.5-4.0 µg for IP and 1:200-1:1000 for WB

IHC : 1:50-1:500

Applications

Tested Applications:

IHC, IP, WB, ELISA

Cited Applications:

IHC, WB

Species Specificity:

human, mouse, rat

Cited Species:

human, mouse

Note: suggested antigen retrieval with TE buffer pH 9.0; (*) Alternatively, antigen retrieval may be performed with citrate buffer pH 6.0

Positive Controls:

WB : K-562 cells; mouse testis tissue

IP : mouse testis tissue;

IHC : human testis tissue;

Background Information

ALDH1A2(aldehyde dehydrogenase family 1 member A2) is also named as RALDH2(retinal dehydrogenase 2) and belongs to the aldehyde dehydrogenase family. It is a cytosolic homotetramer(56.7 kDa subunits) exhibiting complex expression patterns throughout embryonic development. ALDH1A2 plays a role in retinoid metabolism during embryonic development where it is considered to be the major retinoic acid-synthesizing enzyme during early embryogenesis(PMID:20735668). Its expression is reduced in primary prostate tumors compared with normal prostate tissue suggested that it is normally expressed in the epithelial compartment of prostate tissue(PMID:16166285).It has 2 isoforms produced by alternative splicing.

Notable Publications

Author	Pubmed ID	Journal	Application
Bilbija Dusan D	23028599	PLoS One	WB
My-Thanh Beedle	30247516	Biol Reprod	IHC
Samuel L Arnold	25502770	J Lipid Res	IHC

Storage

Storage:

Store at -20°C. Stable for one year after shipment.

Storage Buffer:

PBS with 0.02% sodium azide and 50% glycerol pH 7.3.

Aliquoting is unnecessary for -20°C storage

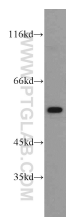
For technical support and original validation data for this product please contact:

T: 1 (888) 4PTGLAB (1-888-478-4522) (toll free in USA), or 1(312) 455-8498 (outside USA)

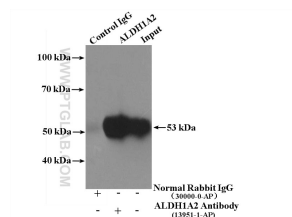
E: proteintech@ptglab.com
W: ptglab.com

This product is exclusively available under Proteintech Group brand and is not available to purchase from any other manufacturer.

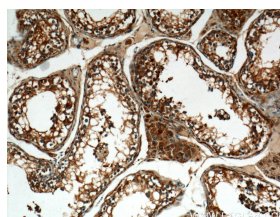
Selected Validation Data



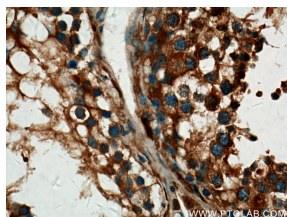
K-562 cells were subjected to SDS PAGE followed by western blot with 13951-1-AP(ALDH1A2 antibody) at dilution of 1:1000 incubated at room temperature for 1.5 hours



IP Result of anti-ALDH1A2 (IP: 13951-1-AP, 4ug; Detection: 13951-1-AP 1:300) with mouse testis tissue lysate 4400ug.



Immunohistochemistry of paraffin-embedded human testis tissue slide using 13951-1-AP(ALDH1A2 Antibody) at dilution of 1:200 (under 10x lens).



Immunohistochemistry of paraffin-embedded human testis tissue slide using 13951-1-AP(ALDH1A2 Antibody) at dilution of 1:200 (under 40x lens).