

For Research Use Only

IGFBP1 Polyclonal antibody

Catalog Number: 13981-1-AP

15 Publications



Basic Information

Catalog Number: 13981-1-AP	GenBank Accession Number: BC057806	Purification Method: Antigen affinity purification
Size: 150ul , Concentration: 850 ug/ml by Nanodrop and 433 ug/ml by Bradford method using BSA as the standard;	GeneID (NCBI): 3484	Recommended Dilutions: WB: 1:5000-1:50000 IHC: 1:500-1:2000
Source: Rabbit	UNIPROT ID: P08833	
Isotype: IgG	Full Name: IGF binding protein 1	
Immunogen Catalog Number: AG5026	Calculated MW: 28 kDa	
	Observed MW: 28-35 kDa	

Applications

Tested Applications: WB, IHC, ELISA	Positive Controls: WB : HepG2 cells, human placenta IHC : human lung cancer tissue,
Cited Applications: WB, IHC, IF	
Species Specificity: human	
Cited Species: human, mouse	
Note-IHC: suggested antigen retrieval with TE buffer pH 9.0; (*) Alternatively, antigen retrieval may be performed with citrate buffer pH 6.0	

Background Information

IGF-binding proteins (IGFBPs) family contains members like IGFBP-1, -2, -3, -4, -5 and -6. IGFBPs prolong the half-life of the IGFs and have been shown to either inhibit or stimulate the growth promoting effects of the IGFs on cell culture. They alter the interaction of IGFs with their cell surface receptors. IGF-I physically interacts with IGFBP-1 and that IGFBP-1 also binds to an integrin receptor, but the effect of IGFBP-1 on cell migration may be independent of IGF-I and is probably mediated through the alpha 5 beta 1 integrin. Transgenic mice models demonstrated that IGFBPs played important roles in the pathogenesis of obesity and INS resistance. Studies conducted in humans demonstrated the close relation between IGFBPs and the components of the metabolic syndrome.

Notable Publications

Author	Pubmed ID	Journal	Application
Min Jin	27628217	Biol Reprod	WB
Hongfei Zhou	36115171	Phytomedicine	WB
Tao Feng	25310700	Mol Med Rep	

Storage

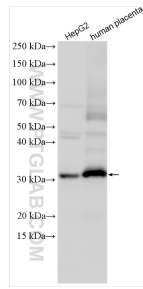
Storage:
Store at -20°C. Stable for one year after shipment.
Storage Buffer:
PBS with 0.02% sodium azide and 50% glycerol, pH7.3
Aliquoting is unnecessary for -20°C storage

*** 20ul sizes contain 0.1% BSA

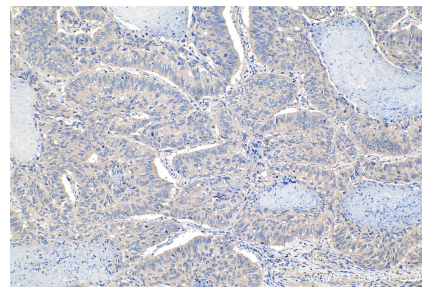
For technical support and original validation data for this product please contact:
T: 1 (888) 4PTGLAB (1-888-478-4522) (toll free in USA), or 1(312) 455-8498 (outside USA)
E: proteintech@ptglab.com
W: ptglab.com

This product is exclusively available under Proteintech Group brand and is not available to purchase from any other manufacturer.

Selected Validation Data



Various lysates were subjected to SDS PAGE followed by western blot with 13981-1-AP (IGFBP1 antibody) at dilution of 1:12000 incubated at room temperature for 1.5 hours.



Immunohistochemical analysis of paraffin-embedded human lung cancer tissue slide using 13981-1-AP (IGFBP1 antibody) at dilution of 1:1000 (under 10x lens). Heat mediated antigen retrieval with Tris-EDTA buffer (pH 9.0).