

GRK2

Polyclonal ANTIBODY

Catalog Number: 13990-1-AP

Featured Product

3 Publications

Basic Information

Catalog Number:
13990-1-AP

Size:
98 µg/150 µl

Source:
Rabbit

Isotype:
IgG

Purification Method:
Antigen affinity purification

Immunogen Catalog Number:
AG5071

GenBank Accession Number:
BC037963

GeneID (NCBI):
156

Full Name:
adrenergic, beta, receptor kinase 1

Calculated MW:
689aa, 80 kDa

Observed MW:
80 kDa

Recommended Dilutions:

WB 1:500-1:2000

IP 0.5-4.0 µg for IP and 1:500-1:2000 for WB

IHC 1:20-1:200

Applications

Tested Applications:

FC, IHC, IP, WB, ELISA

Cited Applications:

IHC, WB

Species Specificity:

human

Cited Species:

human

Note: suggested antigen retrieval with TE buffer pH 9.0; (*) Alternatively, antigen retrieval may be performed with citrate buffer pH 6.0

Positive Controls:

WB : Jurkat cells; HL-60 cells

IP : HL-60 cells;

IHC : human lymphoma tissue;

Background Information

GRK2 (G-protein coupled receptor kinase 2) is also named as ADRBK1 (Beta-adrenergic receptor kinase 1), BARK, and BARK1. G-protein-coupled receptors (GPCRs) transmit extracellular signals across the cell membrane. GPCR kinases (GRKs) desensitize GPCR signals in the cell membrane. GRK2 translocation from the cytoplasm to the cell membrane in response to extracellular signals is critical to the function of the protein, where GRK phosphorylation is an important component of its translocation to the membrane. (PMD:27412951)

Notable Publications

Author	Pubmed ID	Journal	Application
Fan Yang	26347956	Nat Commun	WB
Chen Zhang	25279970	Cancer Biother Radiopharm	WB
Zhou-Wei Xu	28315953	Cancer Chemother Pharmacol	WB,IHC

Storage

Storage:

Store at -20°C. Stable for one year after shipment.

Storage Buffer:

PBS with 0.02% sodium azide and 50% glycerol pH 7.3.

Aliquoting is unnecessary for -20°C storage

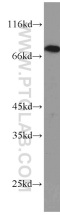
For technical support and original validation data for this product please contact:

T: 1 (888) 4PTGLAB (1-888-478-4522) (toll free in USA), or 1(312) 455-8498 (outside USA)

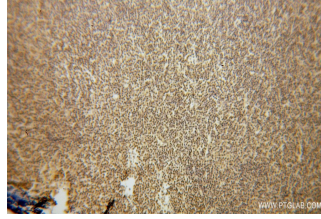
E: proteintech@ptglab.com
W: ptglab.com

This product is exclusively available under Proteintech Group brand and is not available to purchase from any other manufacturer.

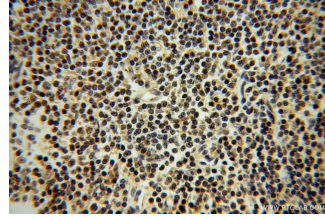
Selected Validation Data



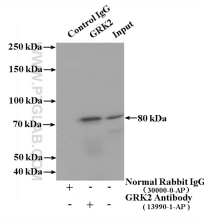
Jurkat cells were subjected to SDS PAGE followed by western blot with 13990-1-AP (GRK2 antibody) at dilution of 1:1000 incubated at room temperature for 1.5 hours



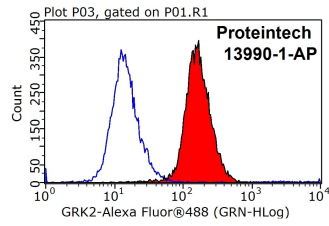
Immunohistochemical of paraffin-embedded human lymphoma using 13990-1-AP (GRK2 antibody) at dilution of 1:100 (under 10x lens)



Immunohistochemical of paraffin-embedded human lymphoma using 13990-1-AP (GRK2 antibody) at dilution of 1:100 (under 40x lens)



IP Result of anti-GRK2 (IP:13990-1-AP; 4ug; Detection:13990-1-AP 1:1000) with HL-60 cells lysate 3040ug.



1X10⁶ HeLa cells were stained with 0.2ug GRK2 antibody (13990-1-AP, red) and control antibody (blue). Fixed with 90% MeOH blocked with 3% BSA (30 min). Alexa Fluor 488-conjugated AffiniPure Goat Anti-Rabbit IgG(H+L) with dilution 1:1000.