

STAG1

Polyclonal ANTIBODY

Catalog Number: 14015-1-AP

Basic Information

Catalog Number: 14015-1-AP	GenBank Accession Number: BC064699	Recommended Dilutions: WB 1:500-1:2000 IF 1:50-1:500
Size: 49 µg/150 µl	GeneID (NCBI): 10274	
Source: Rabbit	Full Name: stromal antigen 1	
Isotype: IgG	Calculated MW: 144 kDa	
Purification Method: Antigen affinity purification	Observed MW: 155 kDa	
Immunogen Catalog Number: AG5123		

Applications

Tested Applications: IF, WB, ELISA	Positive Controls:
Species Specificity: human,mouse,rat	WB : human heart tissue; HeLa cells
Note: suggested antigen retrieval with TE buffer pH 9.0; (*) Alternatively, antigen retrieval may be performed with citrate buffer pH 6.0	IF : HeLa cells;

Background Information

STAG1, also named as SCC3 homolog 1, is a 1258 amino acid protein, which belongs to the SCC3 family. STAG1 interacts directly with RAD21 in cohesin complex and localizes in nucleus. STAG1 is a Component of cohesin complex, which is required for the cohesion of sister chromatids after DNA replication. The cohesin complex apparently forms a large proteinaceous ring within which sister chromatids can be trapped. At anaphase, the complex is cleaved and dissociates from chromatin, allowing sister chromatids to segregate. The cohesin complex may also play a role in spindle pole assembly during mitosis. The calculate molecular weight of STAG1 is 144 kDa, but modified STAG1 is about 145-150 kDa.

Notable Publications

Author	Pubmed ID	Journal	Application
--------	-----------	---------	-------------

Storage

Storage:
Store at -20°C. Stable for one year after shipment.
Storage Buffer:
PBS with 0.02% sodium azide and 50% glycerol pH 7.3.
Aliquoting is unnecessary for -20°C storage

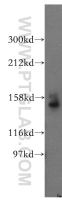
For technical support and original validation data for this product please contact:

T: 1 (888) 4PTGLAB (1-888-478-4522) (toll free in USA), or 1(312) 455-8498 (outside USA)

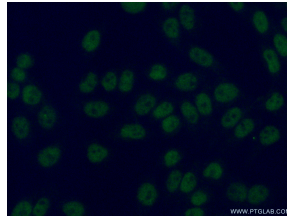
E: proteintech@ptglab.com
W: ptglab.com

This product is exclusively available under Proteintech Group brand and is not available to purchase from any other manufacturer.

Selected Validation Data



human heart tissue were subjected to SDS PAGE followed by western blot with 14015-1-AP(STAG1 antibody) at dilution of 1:500 incubated at room temperature for 1.5 hours



Immunofluorescent analysis of (4% PFA) fixed HeLa cells using 14015-1-AP(STAG1 antibody) at dilution of 1:50 and Alexa Fluor 488-conjugated AffiniPure Goat Anti-Rabbit IgG(H+L)